



## HP 126-in Diverter Roller for the HP Latex 2700 Printer Series and HP Stitch S1000 Printer Series

EN

HP 126-in Diverter Roller for the HP Latex 2700 Printer Series and HP Stitch S1000 Printer Series

JA

HP Latex 2700プリンタ シリーズおよびHP Stitch S1000プリンタ シリーズ用HP 126インチ ダイバーターローラー

ES

HP rodillo desviador de 126 pulgadas para la impresora HP Latex de la serie 2700 y HP Stitch de la serie S1000

ZHTW

适用于 HP Latex 2700 打印机系列和 HP Stitch S1000 打印机系列的 HP 126 英寸转向轮滚筒

FR

Galet déviateur HP 126 pouces pour les imprimantes HP Latex 2700 et HP Stitch S1000

ZHCN

HP Latex 2700 印表機系列和 HP Stitch S1000 印表機系列的 HP 126 英寸分紙器滾筒

DE

HP 126-Zoll-Laufrolle der Umlenkeinheit für die HP Latex 2700 Druckerserie und HP Stitch S1000 Druckerserie

KO

HP Latex 2700 프린터 시리즈 및 HP Stitch S1000 프린터 시리즈용 HP 126인치 전환기 롤러

IT

Rullo deviatore HP da 126 pollici per stampanti HP Latex serie 2700 e HP Stitch serie S1000

NL

HP 126-inch diverterrol voor de HP Latex 2700-printerserie en HP Stitch S1000-printerserie

PT

Rolete defletor HP de 126 pol. para a impressora HP Latex série 2700 e impressora HP Stitch série S1000

RU

126-дюмовый отводящий ролик HP для принтеров серий HP Latex 2700 и HP Stitch S1000

TR

HP Latex 2700 Yazıcı Serisi ve HP Stitch S1000 Yazıcı Serisi için HP 126 inç Yönlendirici Silindiri

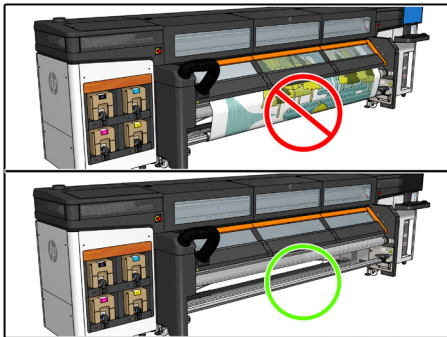




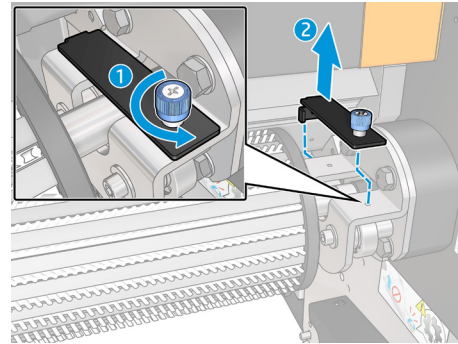
# HP 126-in Diverter Roller for the HP Latex 2700 Printer Series and HP Stitch S1000 Printer Series

## Procedure for HP Stitch S1000 Printer Series

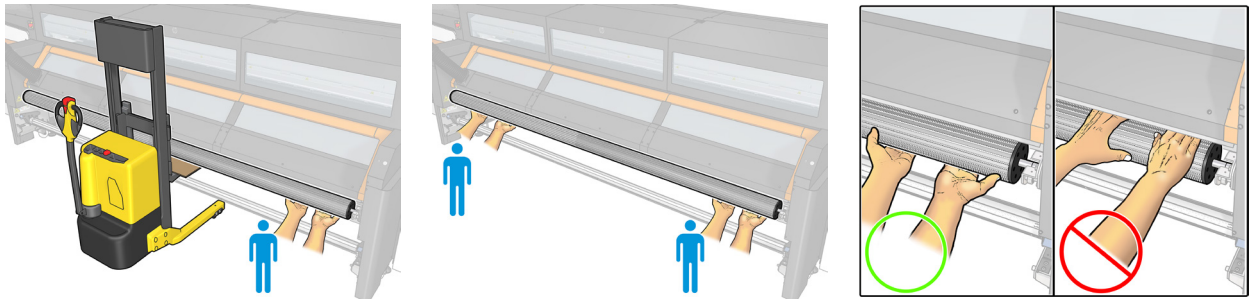
1 Unload any media.



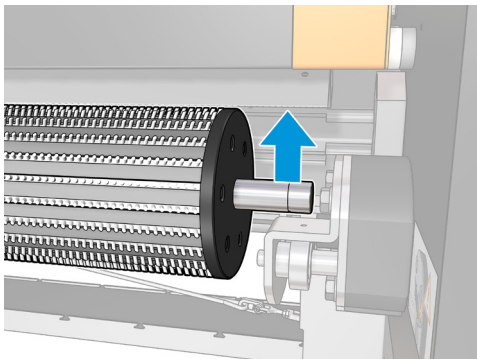
2 Remove the latch from the right side by unscrewing.



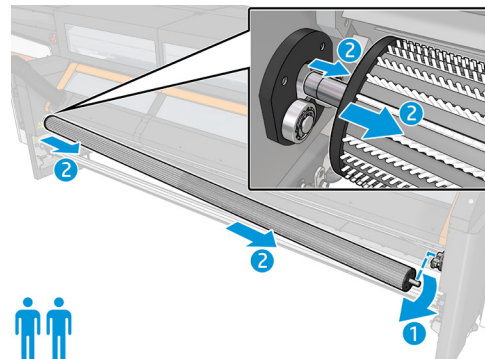
3 Use two operators, or one operator and a trolley. Only hold the roller from the bottom; never put your hand between the roller and the edge of the contact heater.



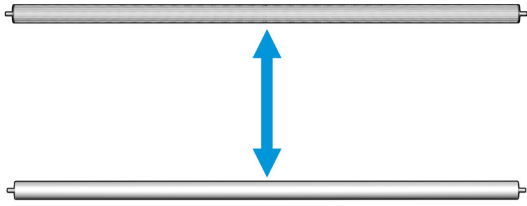
4 Raise from the righthand side.



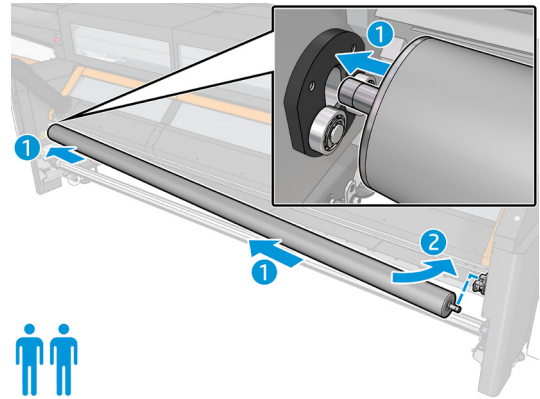
5 Pull the roller to the right to remove it.



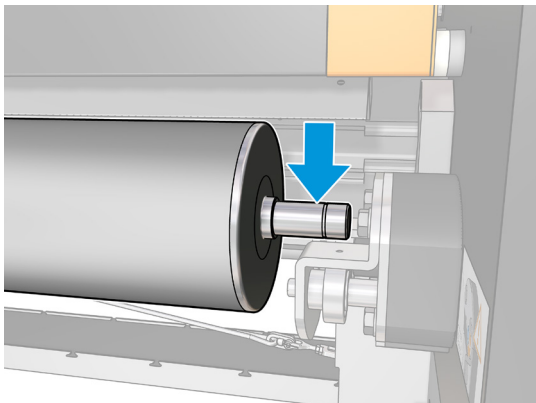
- 6 Select the proper roller configuration: spread, or plain diverter.



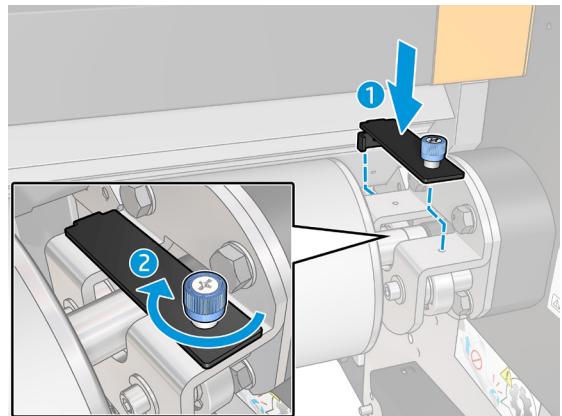
- 7 Insert the roller on the left support by pushing towards the left.



- 8 Make the roller level by pushing down on the right support.

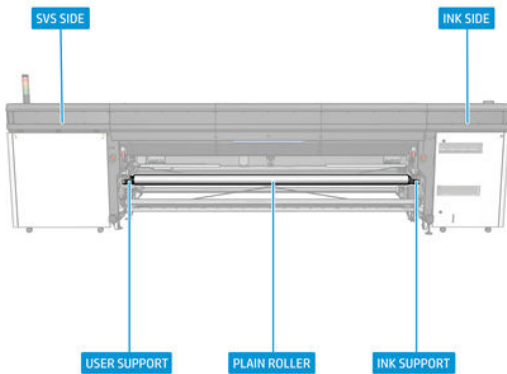


- 9 Install the safety latch on the right support by screwing.

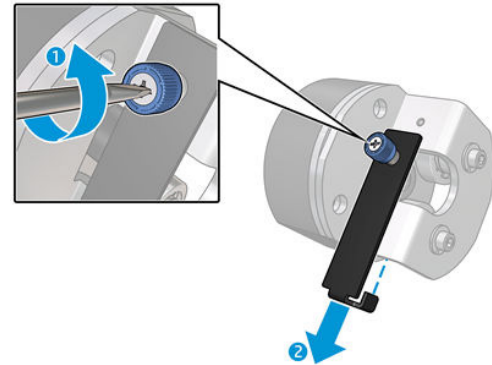


# Procedure for HP Latex 2700 Printer Series

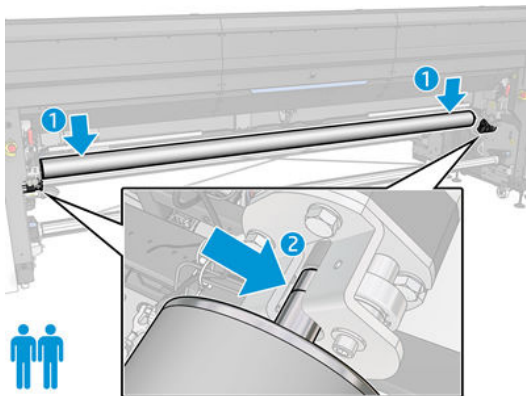
- 1 Unload any media.



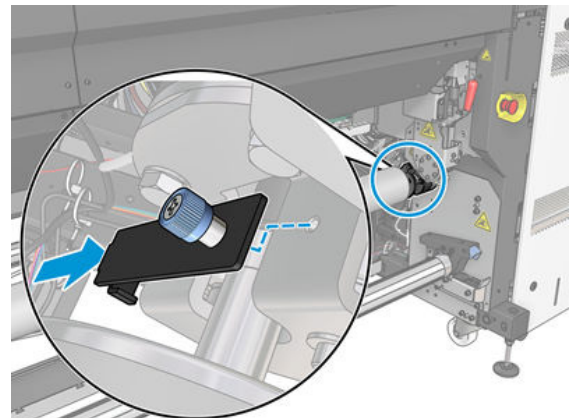
- 2 Remove the latch from both sides by unscrewing.



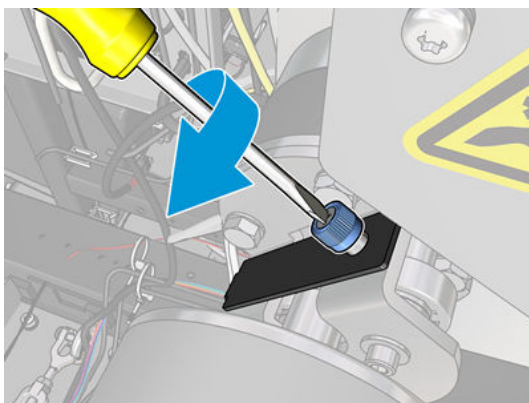
- 3 Insert the Plain Roller with the help of another person. Make sure that it fits at both sides.



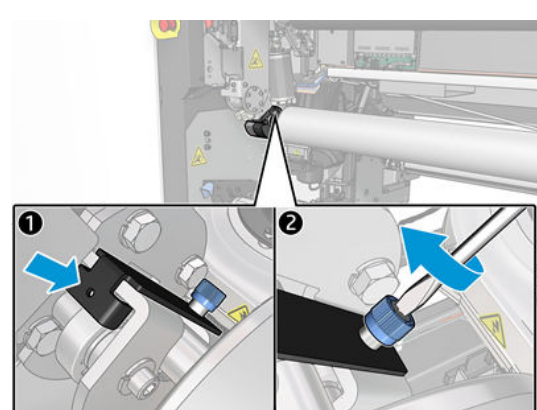
- 4 Put back the black plate of both supports once the Plain Roller is correctly inserted at both supports.



- 5 Tighten the screw of the black plate.



- 6 Put back the black plate of user support and tighten the screw.





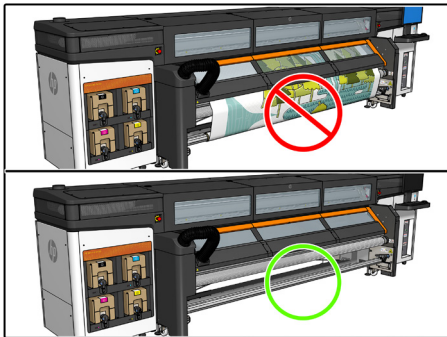




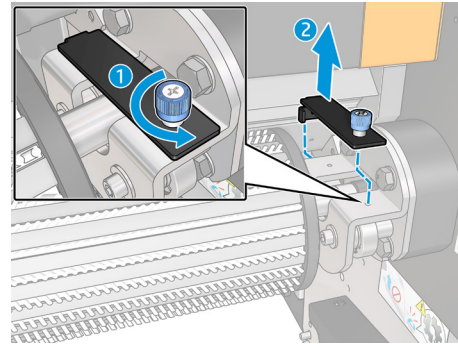
# HP rodillo desviador de 126 pulgadas para la impresora HP Latex de la serie 2700 y HP Stitch de la serie S1000

## Procedimiento para la impresora HP Stitch de la serie S1000

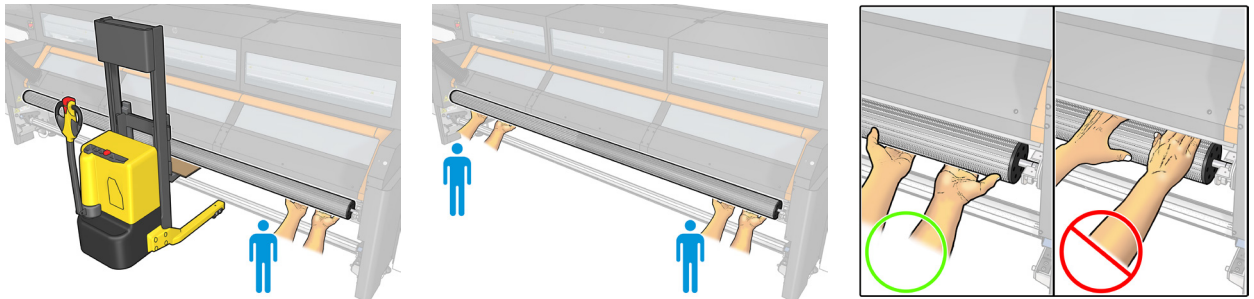
1 Descargue cualquier material.



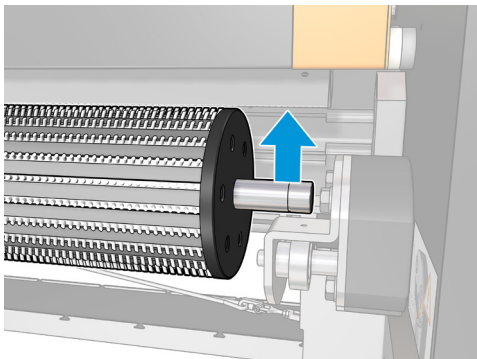
2 Retire el pestillo del lado derecho desenroscándolo.



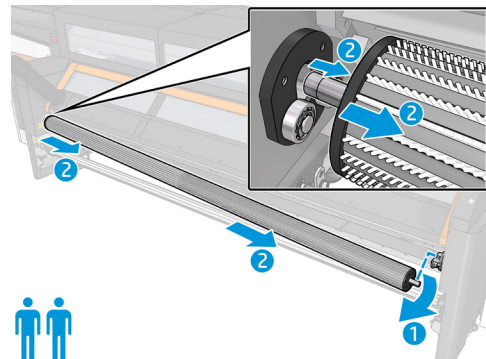
3 Utilice dos operarios o un operario y un carro. Solo sujete el rodillo por la parte inferior; nunca ponga la mano entre el rodillo y el borde del calentador de contacto.



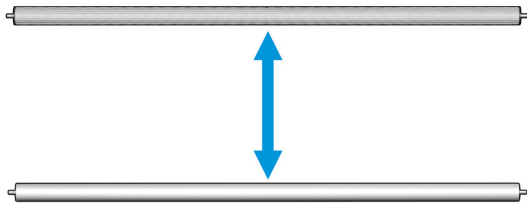
4 Levante desde el lado derecho.



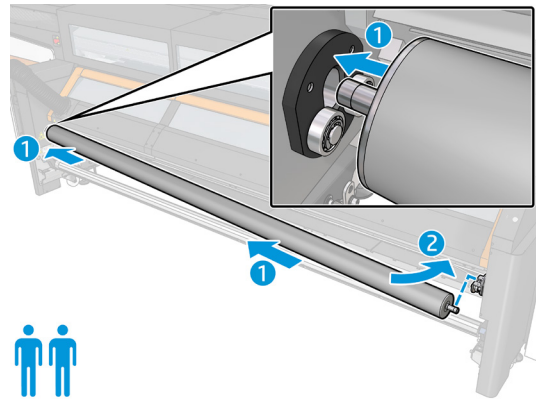
5 Tire del rodillo hacia la derecha para retirarlo.



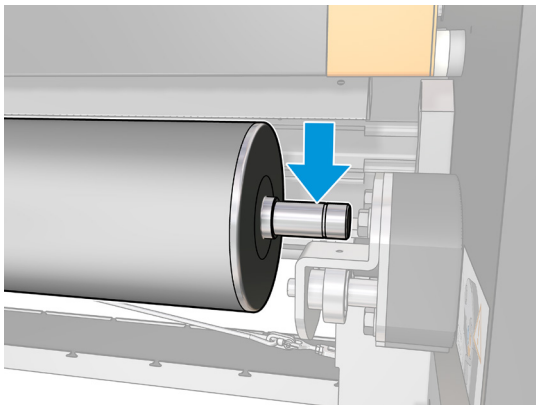
6 Seleccione la configuración de rodillo adecuada: dispersión o rodillo desviador normal.



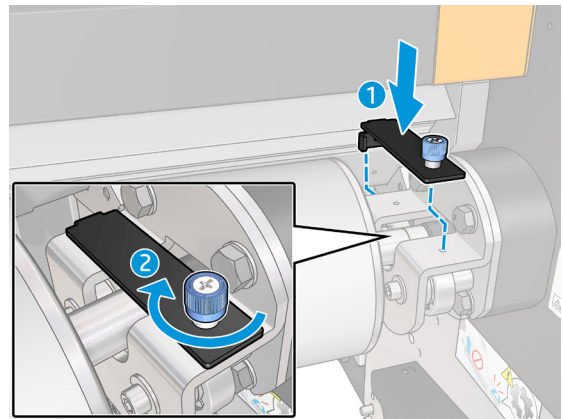
7 Inserte el rodillo en el soporte izquierdo empujando hacia la izquierda.



8 Nivele el rodillo presionando hacia abajo en el soporte derecho.



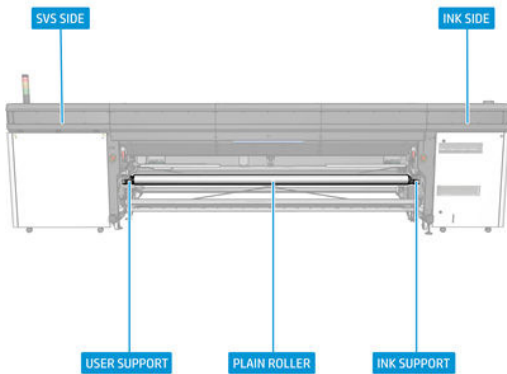
9 Instale el pestillo de seguridad en el soporte derecho atornillándolo.



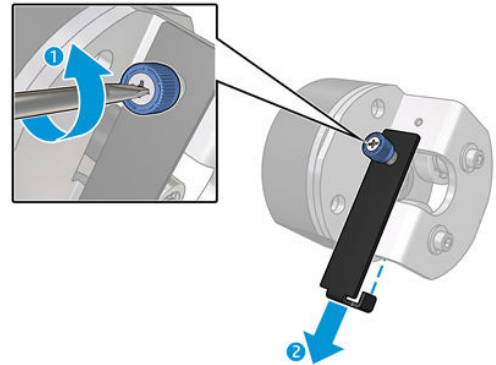


# Procedimiento para la impresora HP Latex de la serie 2700

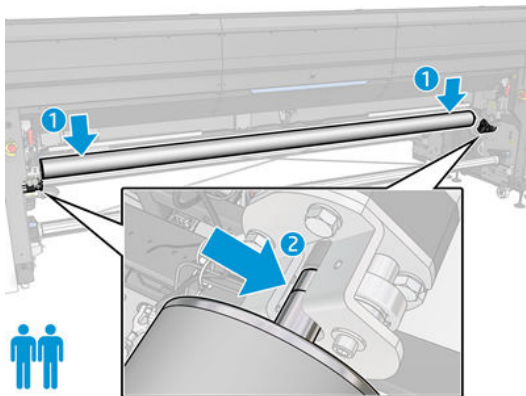
- 1 Descargue cualquier material.



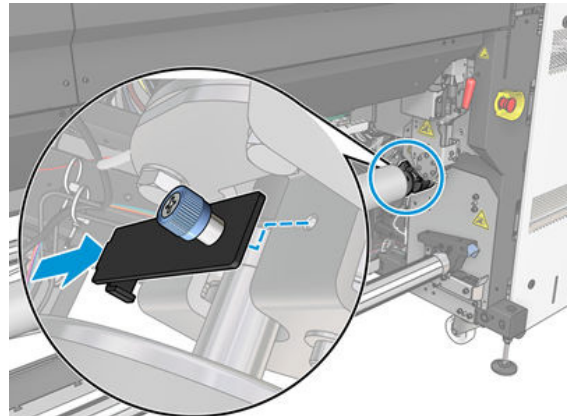
- 2 Retire el pestillo de ambos lados desenroscándolo.



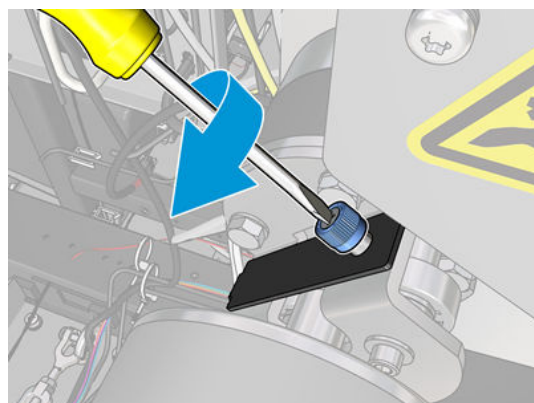
- 3 Inserte el rodillo normal con la ayuda de otra persona. Asegúrese de que encaja en ambos lados.



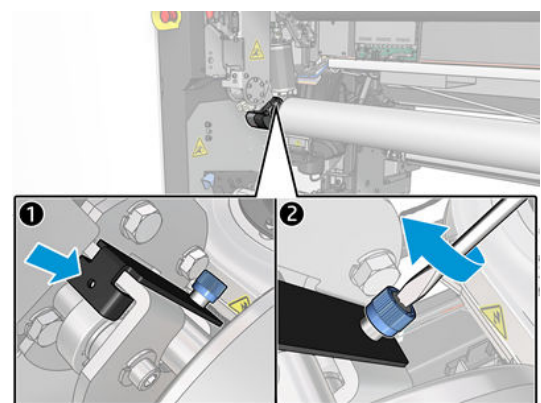
- 4 Vuelva a colocar la platina negra de ambos soportes una vez que el rodillo normal esté correctamente insertado en ambos soportes.



- 5 Apriete el tornillo de la platina negra.



- 6 Vuelva a colocar la platina negra del soporte del usuario y apriete el tornillo.



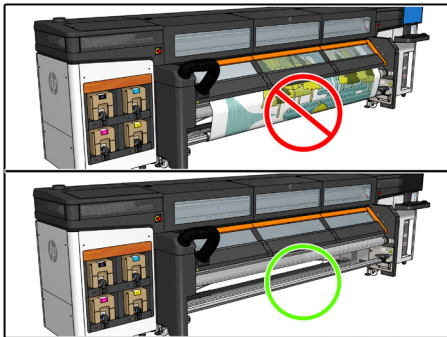




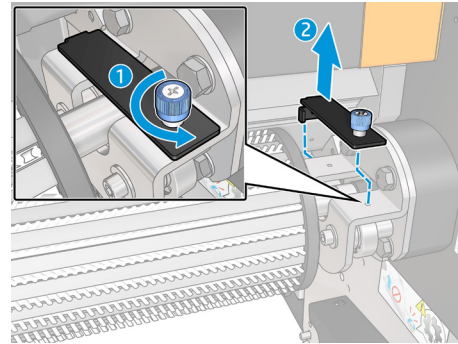
# Galet déviateur HP 126 pouces pour les imprimantes HP Latex 2700 et HP Stitch S1000

## Procédure pour les imprimantes HP Stitch S1000

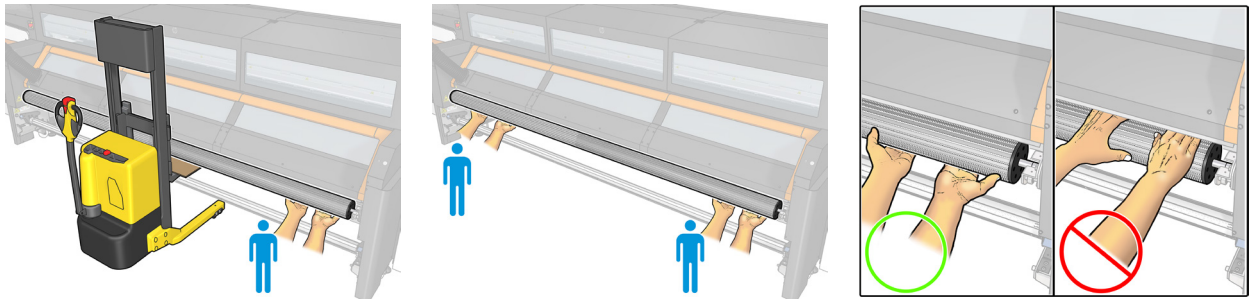
1 Déchargez tout support.



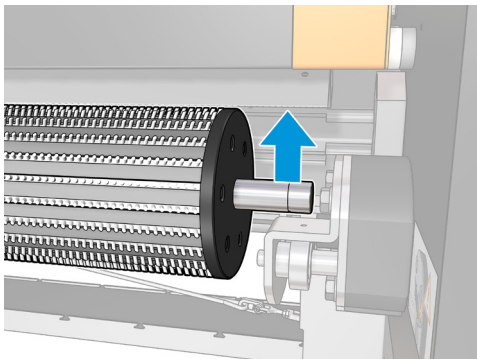
2 Retirez le loquet du côté droit en dévissant.



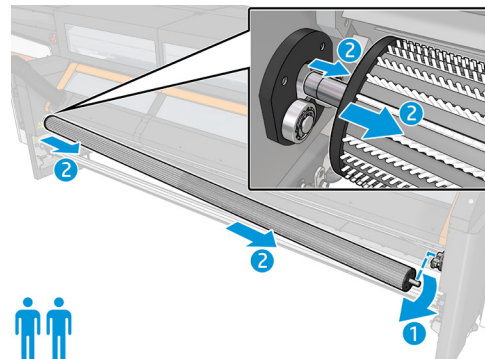
3 Utilisez deux opérateurs, ou un opérateur et un chariot. Tenez uniquement le galet par le bas ; ne mettez jamais votre main entre le galet et le bord du chauffage de contact.



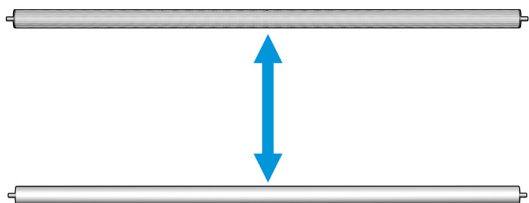
4 Relevez du côté droit.



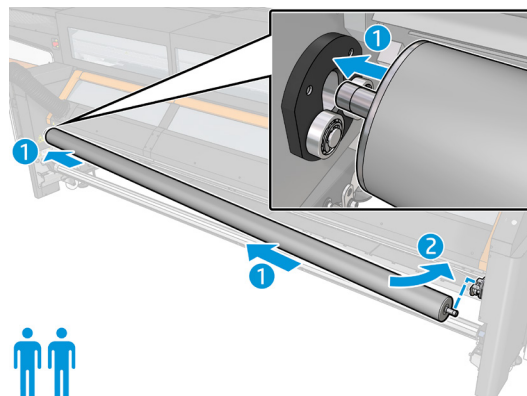
5 Tirez le galet vers la droite pour le retirer.



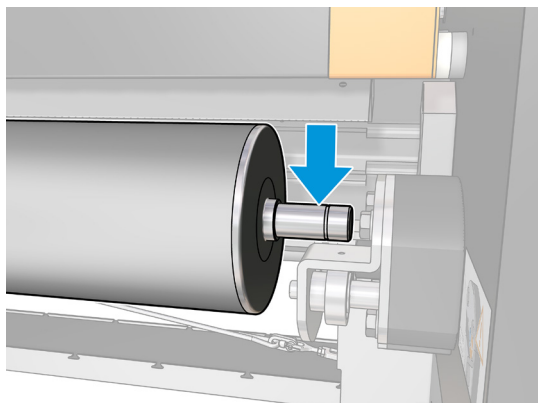
- 6 Sélectionnez la configuration du galet appropriée : déviateur ordinaire ou étalé.



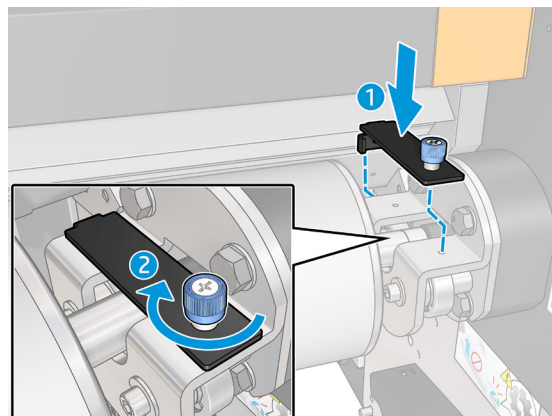
- 7 Insérez le galet sur le support gauche en poussant vers la gauche.



- 8 Mettez le galet à niveau en poussant le support droit vers le bas.

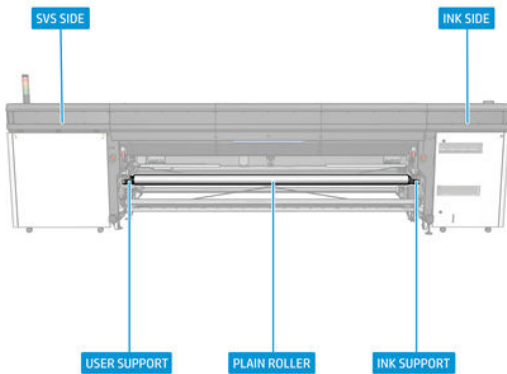


- 9 Installez le loquet de sécurité sur le support droit en vissant.

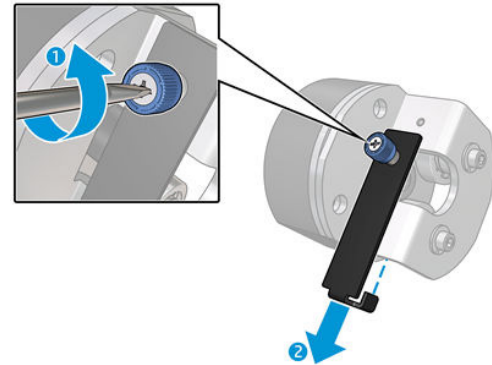


# Procédure pour les imprimantes HP Latex 2700

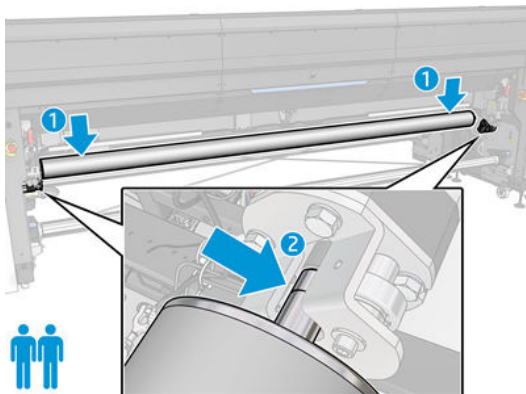
- 1 Déchargez tout support.



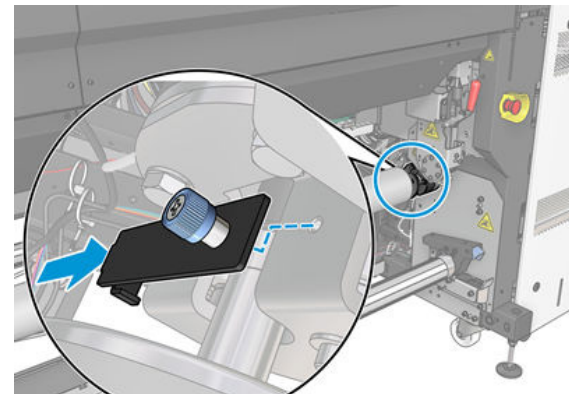
- 2 Retirez le loquet des deux côtés en dévissant.



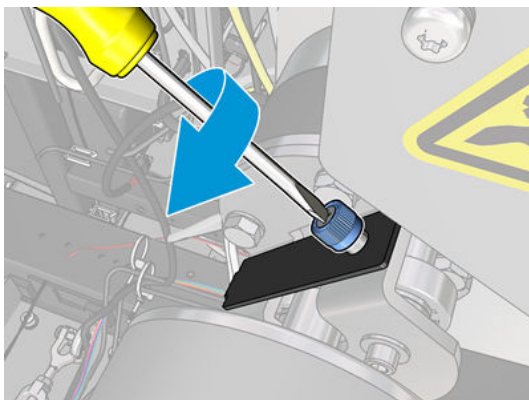
- 3 Insérez le galet ordinaire à l'aide d'une autre personne. Assurez-vous qu'il rentre des deux côtés.



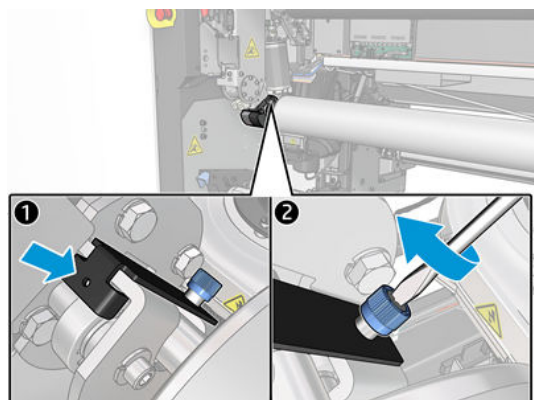
- 4 Remettez en place la plaque noire des deux supports une fois que le galet ordinaire est correctement inséré pour les deux supports.



- 5 Serrez la vis de la plaque noire.



- 6 Remettez en place la plaque noire du support utilisateur et serrez la vis.





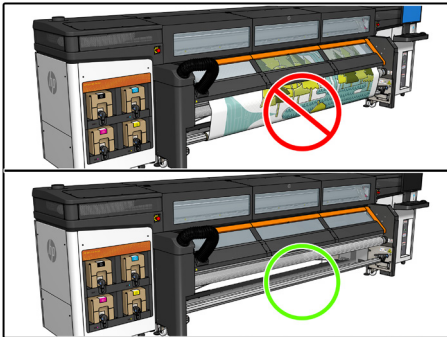




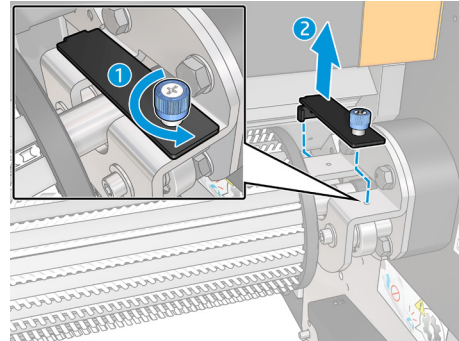
# HP 126-Zoll-Laufrolle der Umlenkeinheit für die HP Latex 2700 Druckerserie und HP Stitch S1000 Druckerserie

## Verfahren für die HP Stitch S1000 Druckerserie

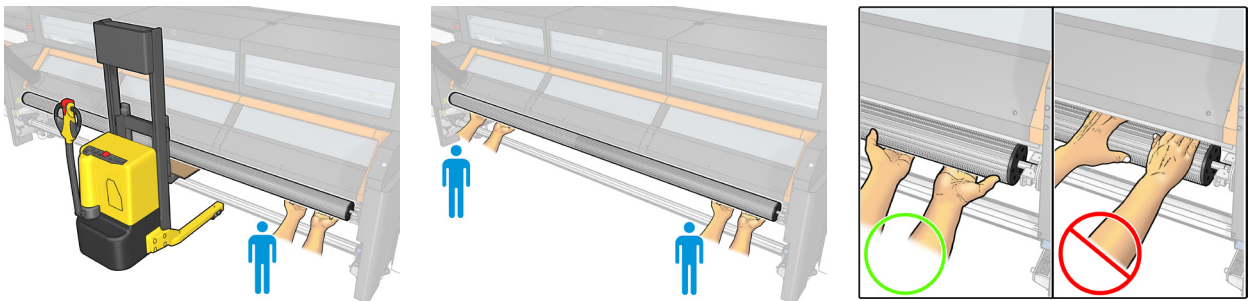
1 Entnehmen Sie alle Medien.



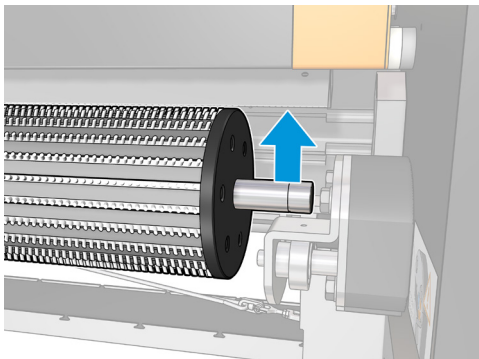
2 Entfernen Sie die Verriegelung von der rechten Seite, indem Sie sie abschrauben.



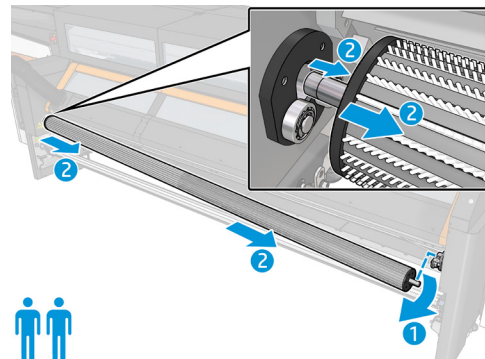
3 Verwenden Sie zwei Bediener oder einen Bediener und einen Handwagen. Halten Sie die Laufrolle nur von unten; legen Sie Ihre Hand nie zwischen die Laufrolle und die Kante der Kontaktheizvorrichtung.



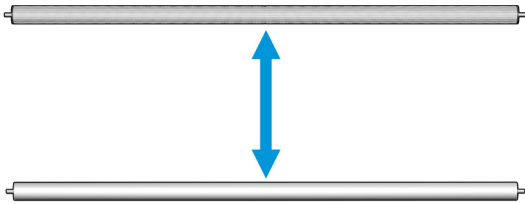
4 Heben Sie die Laufrolle von der rechten Seite ab.



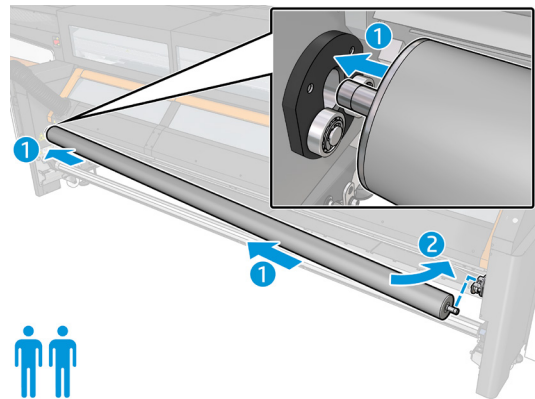
5 Ziehen Sie die Laufrolle nach rechts, um sie zu entfernen.



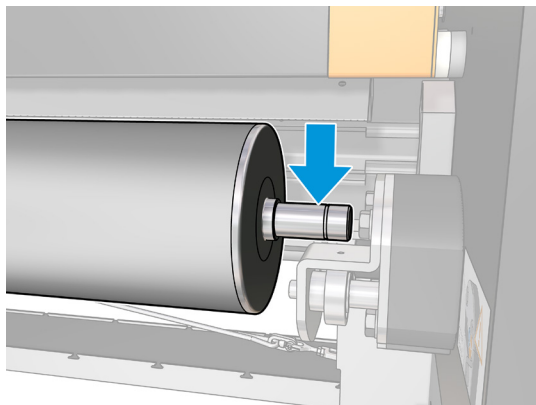
- 6 Wählen Sie die richtige Laufrollenkonfiguration aus: Streuwalze oder Normalumlenker.



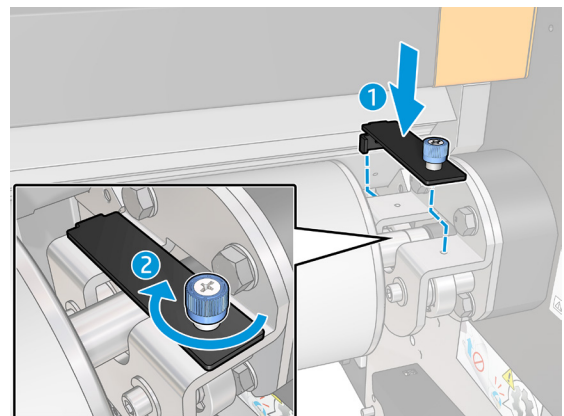
- 7 Setzen Sie die Laufrolle auf der linken Halterung ein, indem Sie sie nach links drücken.



- 8 Stellen Sie die Laufrollenebene ein, indem Sie die rechte Halterung nach unten drücken.

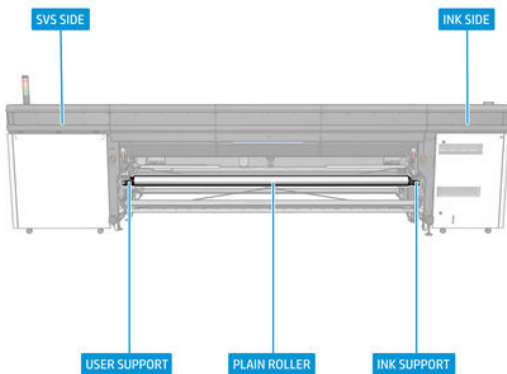


- 9 Bringen Sie die Sicherheitsverriegelung an der rechten Halterung an, indem Sie sie einschrauben.

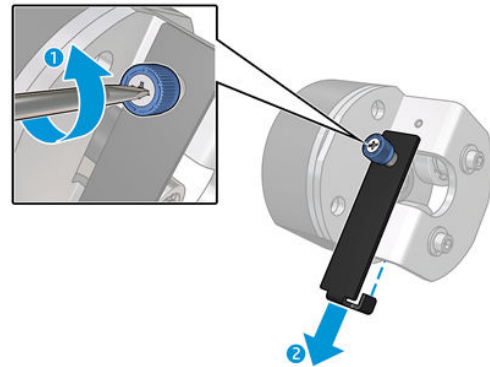


# Verfahren für die HP Latex 2700 Druckerserie

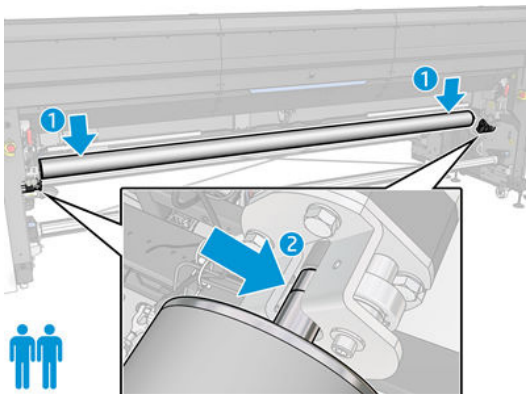
- 1 Entnehmen Sie alle Medien.



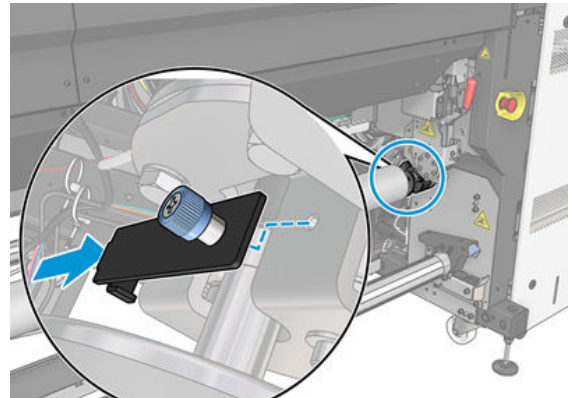
- 2 Entfernen Sie die Verriegelung von beiden Seiten, indem Sie sie abschrauben.



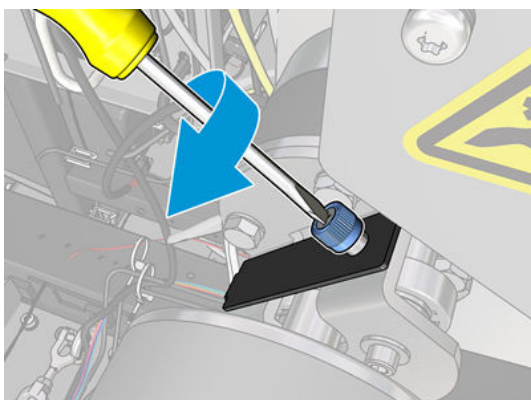
- 3 Setzen Sie die Normallaufrolle mit Hilfe einer weiteren Person ein. Vergewissern Sie sich, dass sie auf beiden Seiten passt.



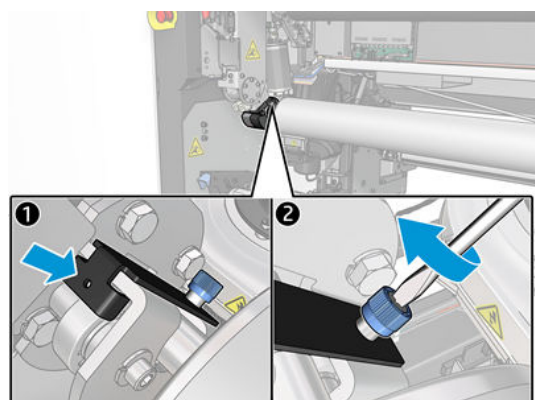
- 4 Setzen Sie die schwarze Platte beider Halterungen wieder ein, sobald die Normallaufrolle richtig auf beiden Halterungen eingesetzt ist.



- 5 Ziehen Sie die Schraube der schwarzen Platte an.



- 6 Setzen Sie die schwarze Platte der Benutzerhalterung wieder ein und ziehen Sie die Schraube an.



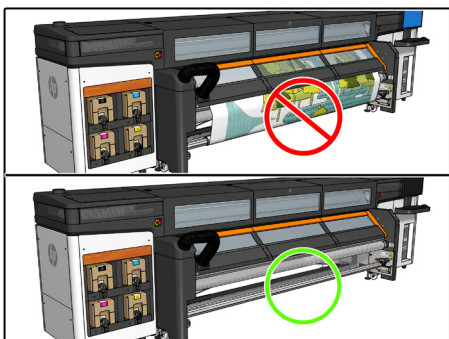




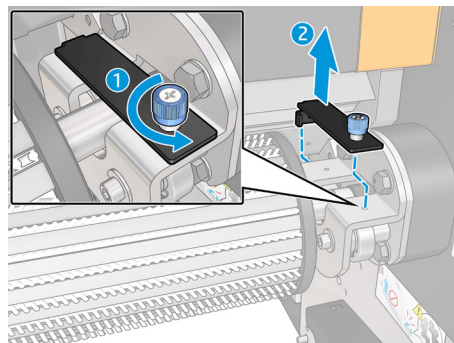
# Rullo deviatore HP da 126 pollici per stampanti HP Latex serie 2700 e HP Stitch serie S1000

## Procedura per le stampanti HP Stitch serie S1000

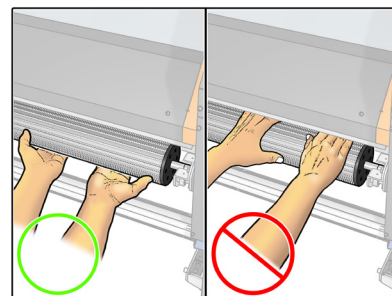
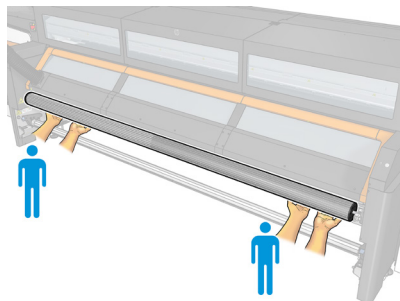
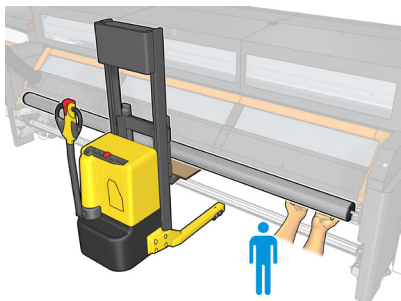
- 1 Rimuovere qualsiasi supporto.



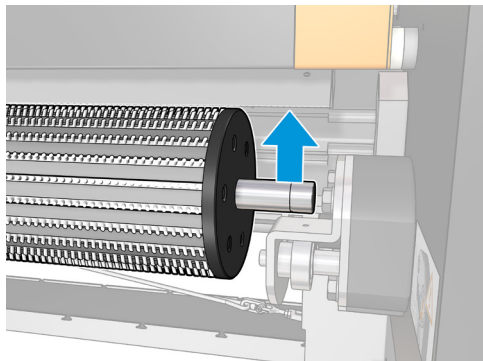
- 2 Rimuovere la levetta di fermo dal lato destro svitandola.



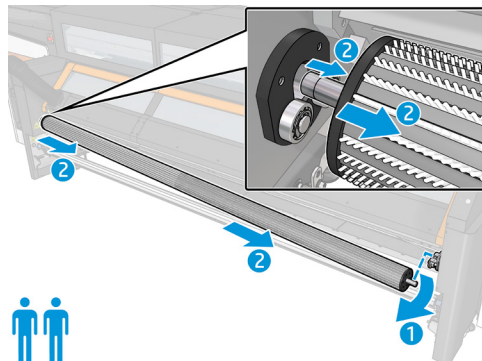
- 3 Utilizzare due operatori, o un operatore e un carrello. Tenere il rullo solo dal basso; non mettere mai la mano tra il rullo e il bordo dell'unità di riscaldamento a contatto.



- 4 Sollevare dal lato destro.

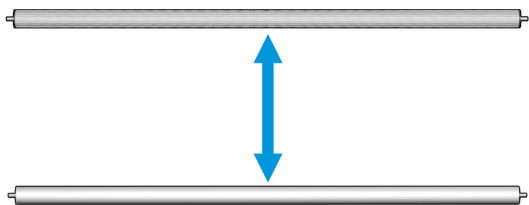


- 5 Tirare il rullo verso destra per rimuoverlo.

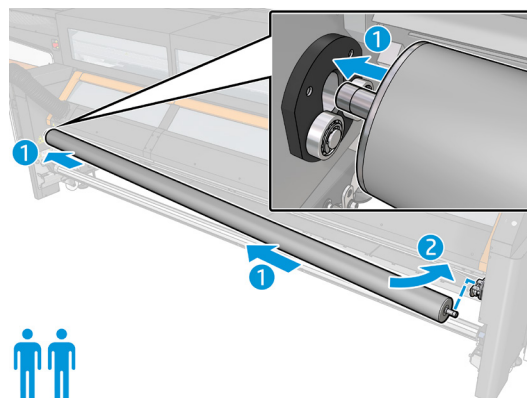




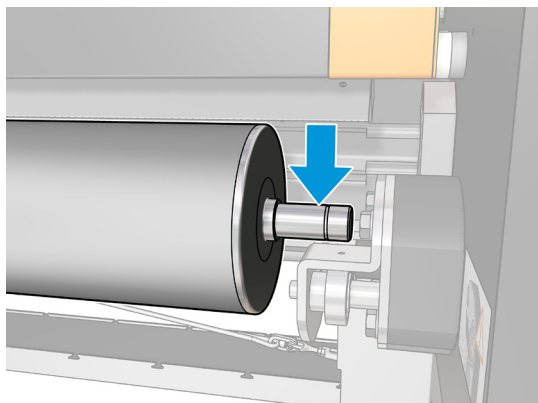
- 6 Selezionare la configurazione del rullo corretta: distribuzione o deviatore normale.



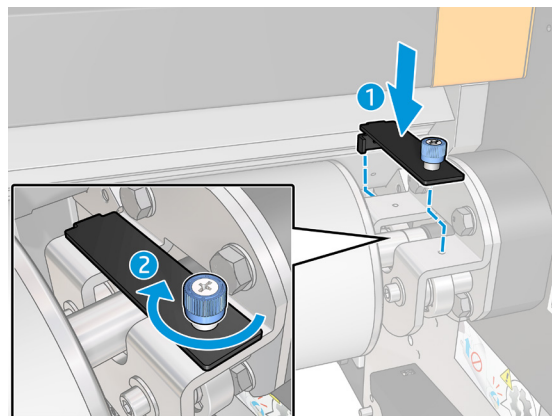
- 7 Inserire il rullo sul supporto sinistro spingendo verso sinistra.



- 8 Livellare il rullo spingendo verso il basso il supporto destro.



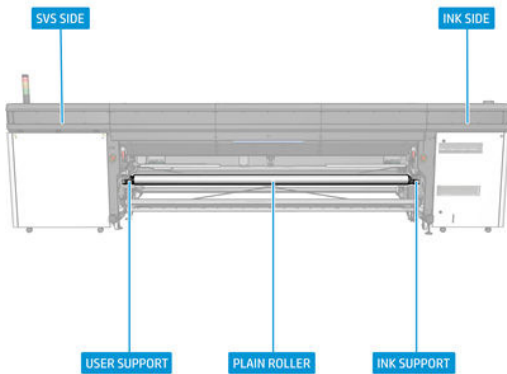
- 9 Installare la levetta di sicurezza sul supporto destro avvitandola.



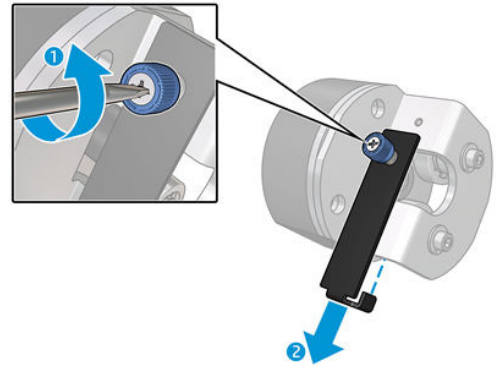


# Procedura per le stampanti HP Latex serie 2700

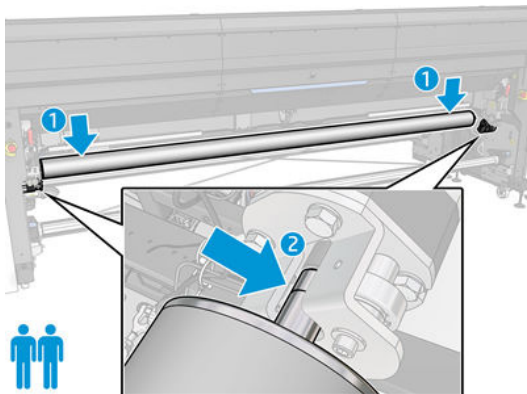
- 1 Rimuovere qualsiasi supporto.



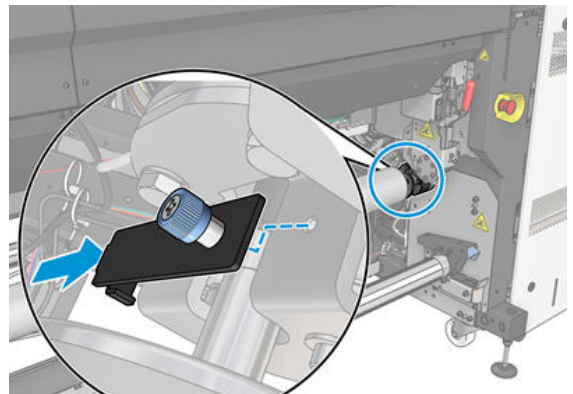
- 2 Rimuovere la levetta di fermo da entrambi i lati svitandola.



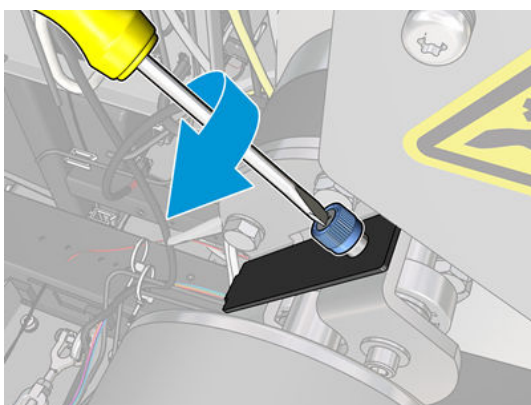
- 3 Inserire il rullo regolare con l'aiuto di un'altra persona. Verificare che si adatti a entrambi i lati.



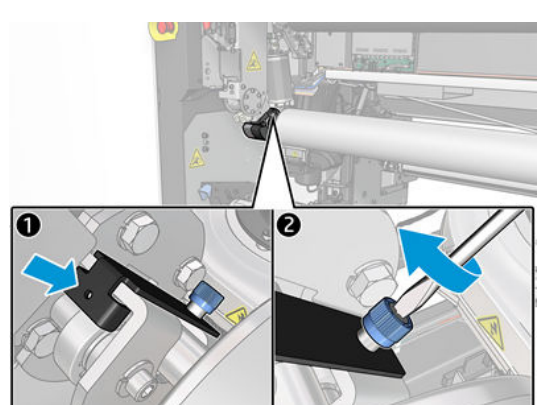
- 4 Reinscrivere la piastra nera di entrambi i supporti una volta che il rullo regolare è correttamente inserito in entrambi i supporti.



- 5 Serrare la vite della piastra nera.



- 6 Rimontare la piastra nera del supporto utente e serrare la vite.



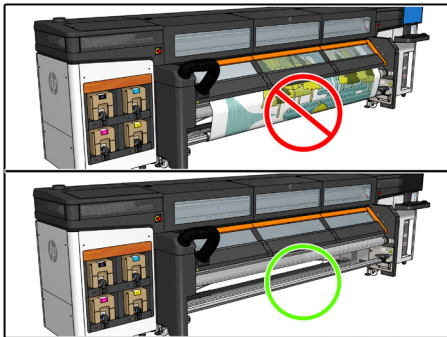




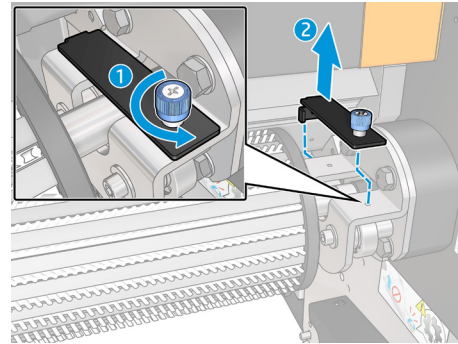
# Rolete defletor HP de 126 pol. para a impressora HP Latex série 2700 e impressora HP Stitch série S1000

## Procedimento para a impressora HP Stitch série S1000

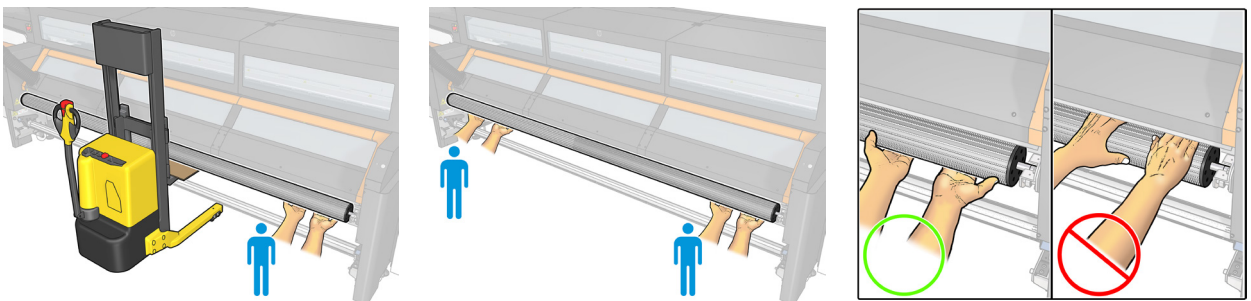
- 1 Descarregue todas as mídias.



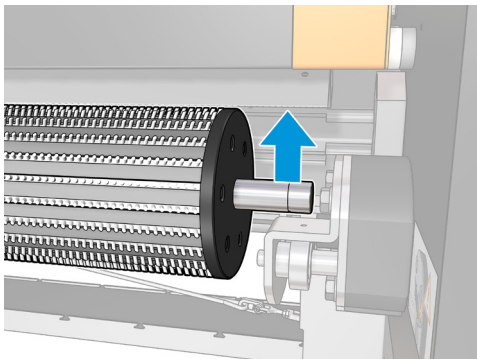
- 2 Desparafuse e remova a trava do lado direito.



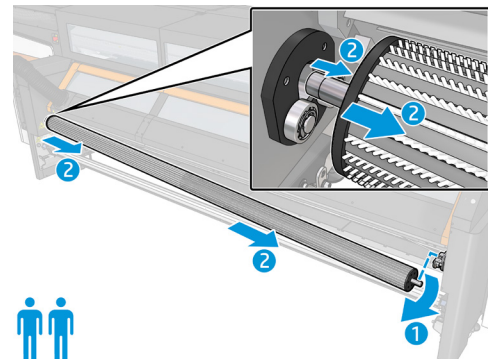
- 3 Use dois operadores ou um operador e um carrinho. Segure o rolete somente pela parte inferior; nunca coloque a mão entre o rolete e a borda do aquecedor por contato.



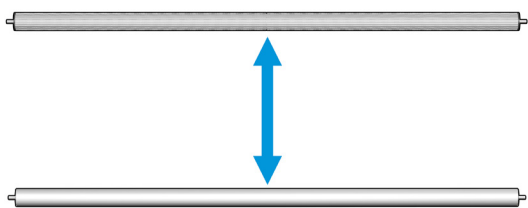
- 4 Levante a partir do lado direito.



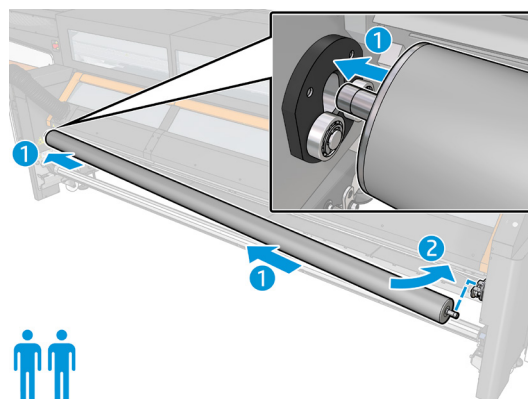
- 5 Puxe o rolete para a direita para removê-lo.



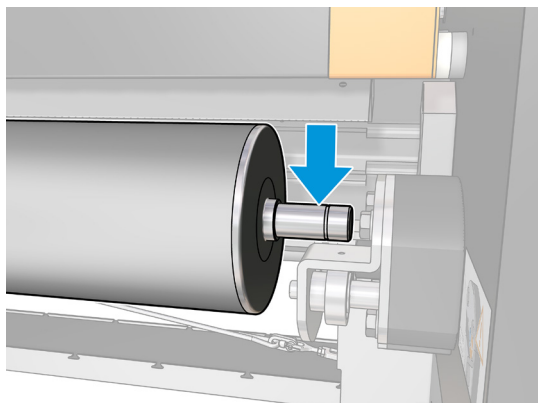
- 6 Selecione a configuração adequada do rolete: espalhamento ou defletor comum.



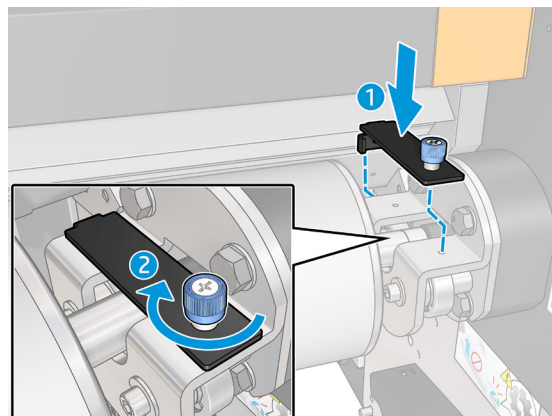
- 7 Insira o rolete no suporte esquerdo empurrando-o em direção à esquerda.



- 8 Nivele o rolete empurrando o suporte direito para baixo.

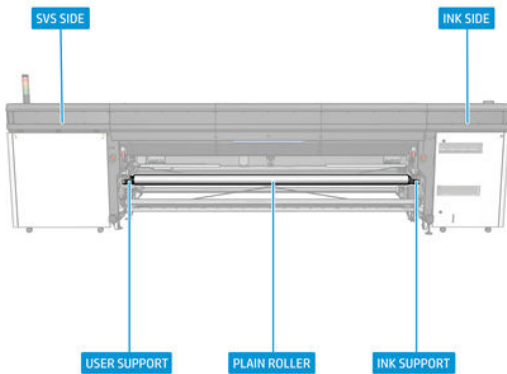


- 9 Parafuse a trava de segurança no suporte direito.

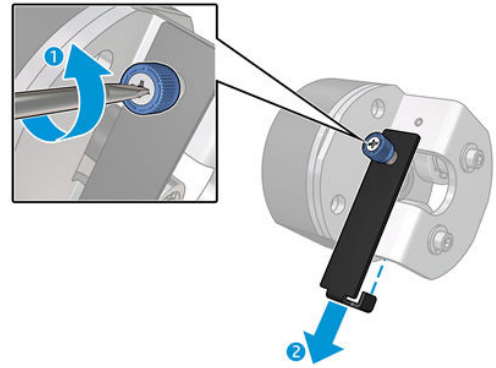


# Procedimento para a impressora HP Latex série 2700

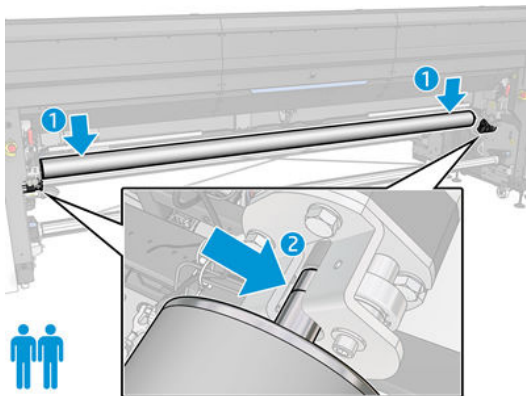
- 1 Descarregue todas as mídias.



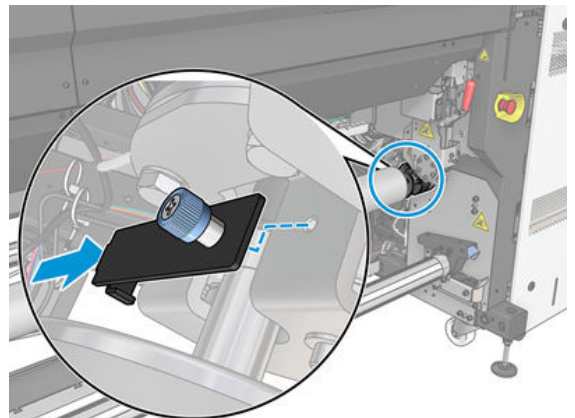
- 2 Desparafuse e remova a trava de ambos os lados.



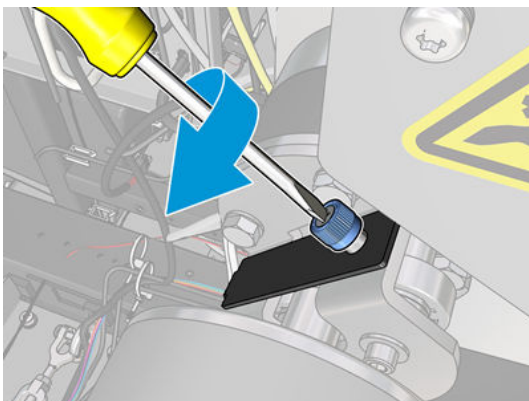
- 3 Insira o rolete comum com a ajuda de outra pessoa. Certifique-se de que o rolete caiba em ambos os lados.



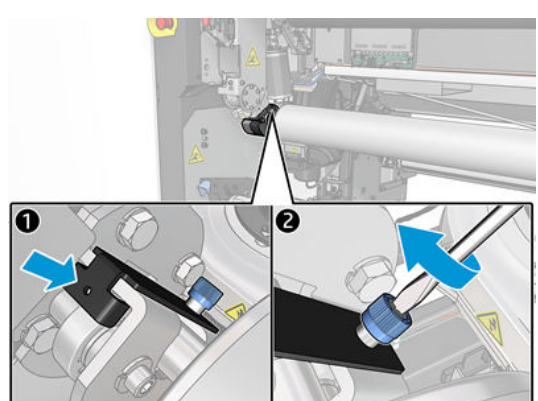
- 4 Recoloque a placa preta de ambos os suportes quando o rolete comum estiver inserido corretamente nesses suportes.



- 5 Aperte o parafuso da placa preta.



- 6 Recoloque a placa preta do suporte do usuário e aperte o parafuso.





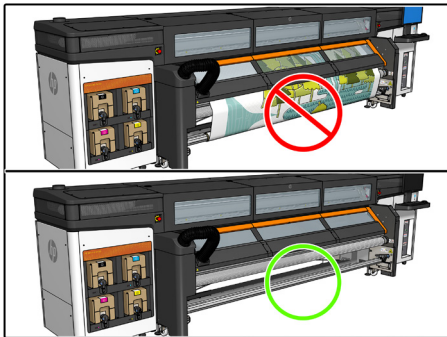




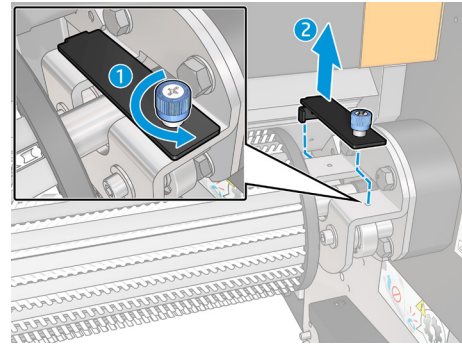
# HP Latex 2700プリンタ シリーズおよびHP Stitch S1000プリンタ シリーズ用HP 126イ ンチ ダイバーター ローラー

## HP Stitch S1000プリンタ シリーズの手順

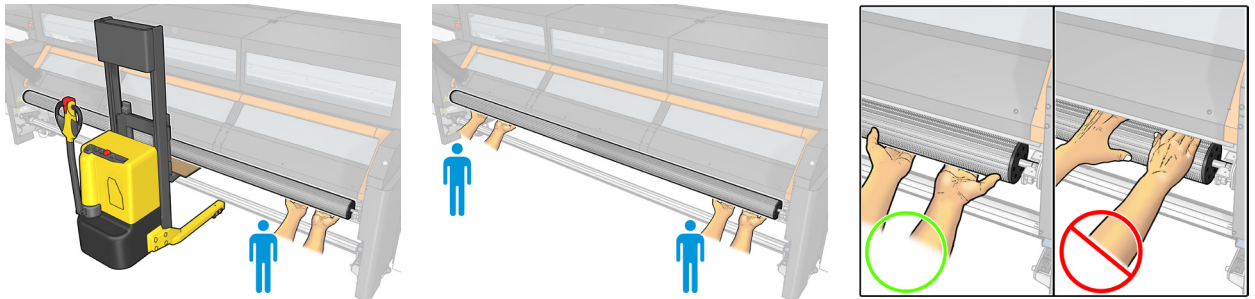
- 1 すべてのメディアを取り外します。



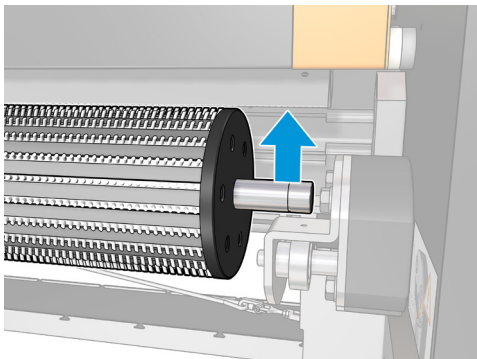
- 2 ネジを緩めて右側からラッチを取り外します。



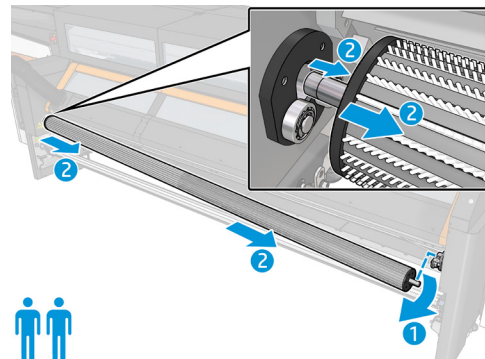
- 3 オペレータ2人、またはオペレータ1人とトロリーを用意します。ローラーは下から押さえるだけにしてください。ローラーと接ヒーターの端の間に手を入れないでください。



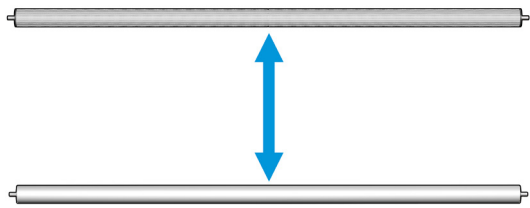
- 4 右側から引き上げます。



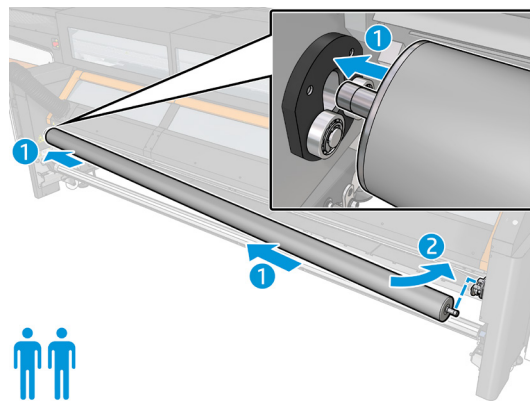
- 5 ローラーを右側に引いて取り外します。



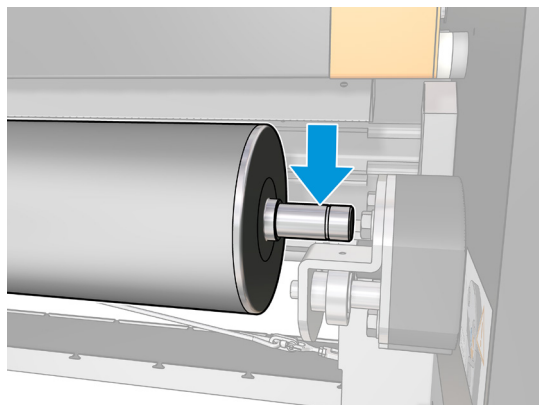
6 適切なローラー設定 (スプレッドまたはプレーンダイバーター) を選 します。



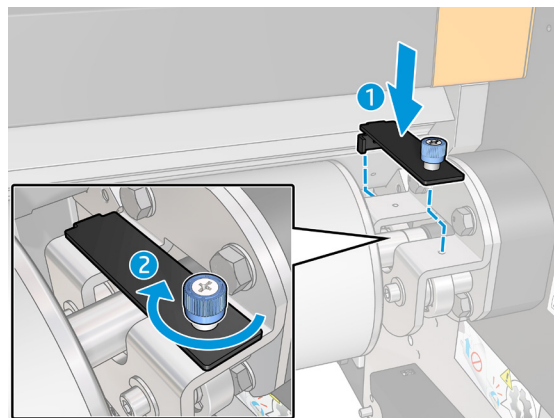
7 ローラーを左方向に押し 込んで、左 サポートに 入します。



8 ローラーを右サポートで下に押し 込んで水平にします。

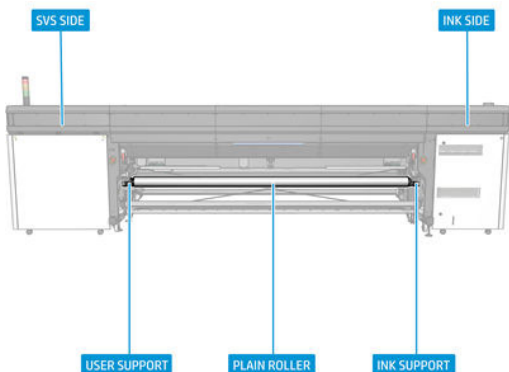


9 ネジで右サポートに安全ラッチを取り 付けます。

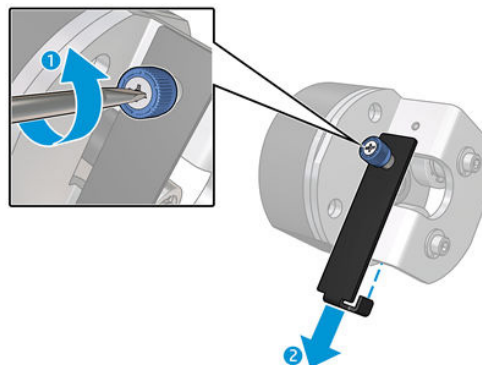


# HP Latex 2700プリンタ シリーズの手順

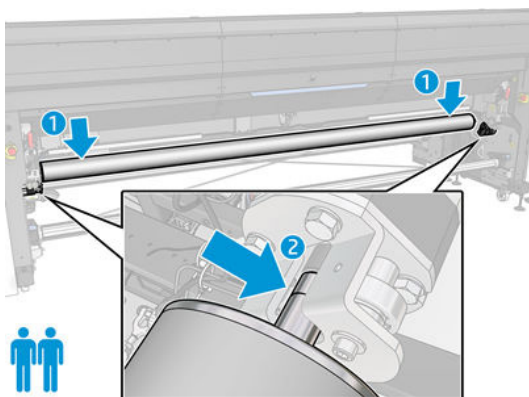
1 すべてのメディアを取り外します。



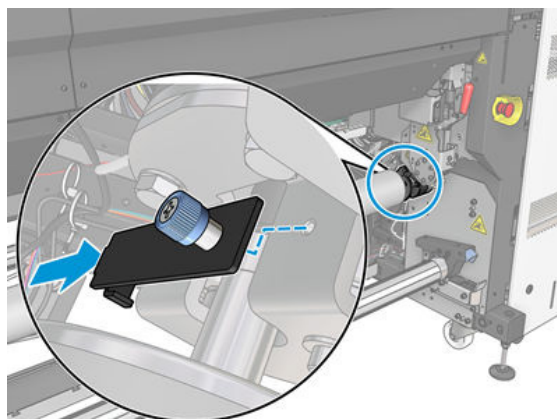
2 ネジを緩めて 側からラッチを取り外します。



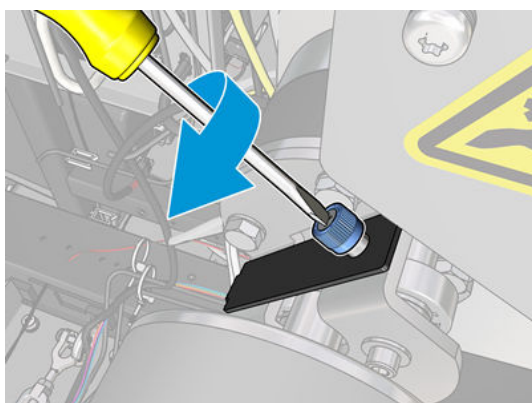
3 別の人の助けを借りて、プレーンローラーを入します。側にぴったりまることを確認してください。



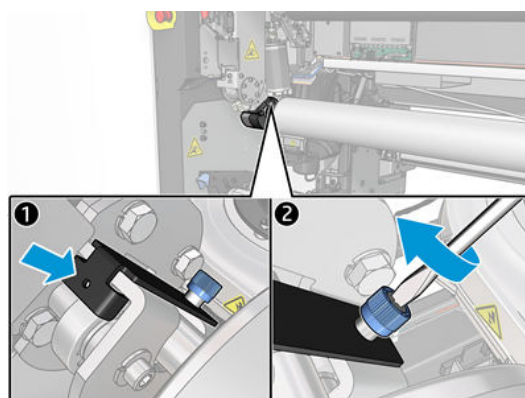
4 方のサポートにプレーンローラーが正しく入されたら、方のサポートのいプレートをします。



5 いプレートのネジを締めます。



6 ユーザーサポートのいプレートをし、ネジを締めます。



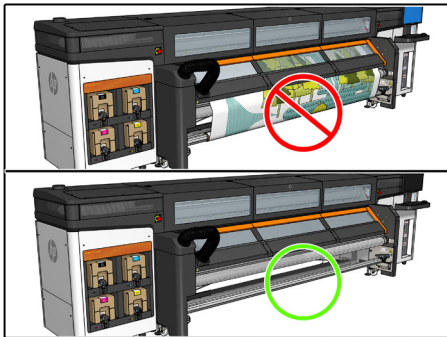




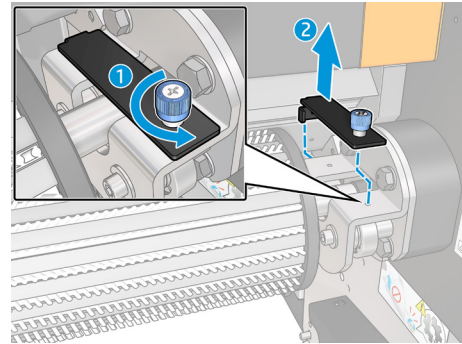
# 适用于 HP Latex 2700 打印机系列和 HP Stitch S1000 打印机系列的 HP 126 英寸转向轮滚筒

## HP Stitch S1000 打印机系列的过程

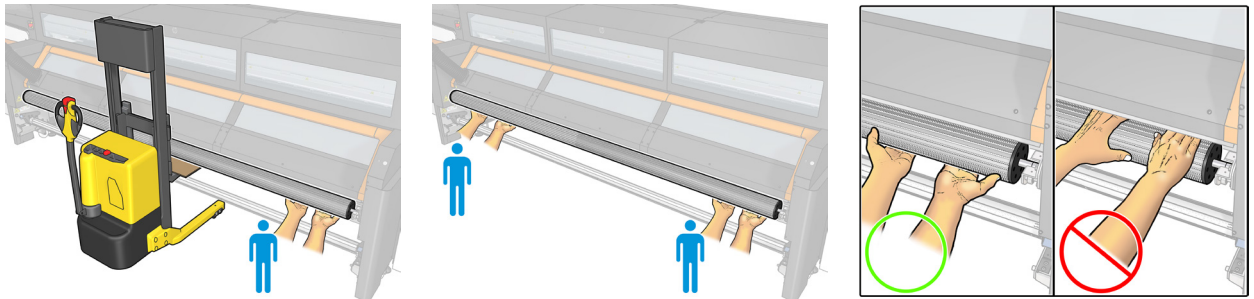
1 取出任何介质。



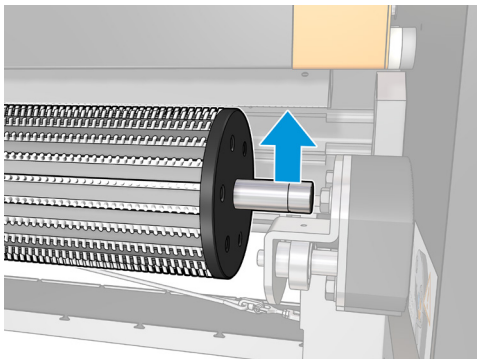
2 拧松螺钉，从右侧卸下闩锁。



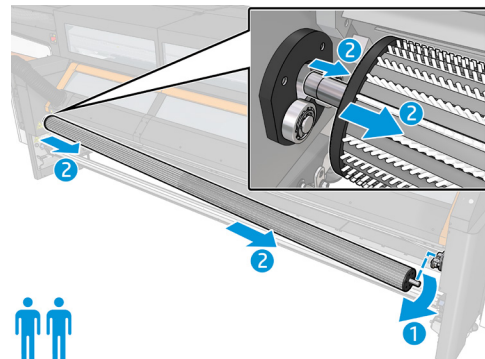
3 需要两名操作员或一名操作员和一辆手推车。仅限从底部握住滚筒；切勿将手放在滚筒与接触式加热器的边缘之间。



4 从右侧抬起。

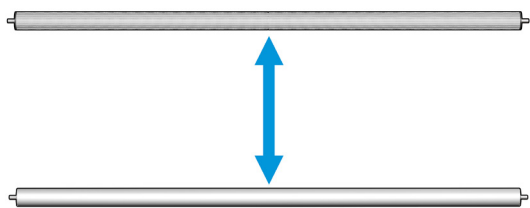


5 向右拉动滚筒以将其卸下。

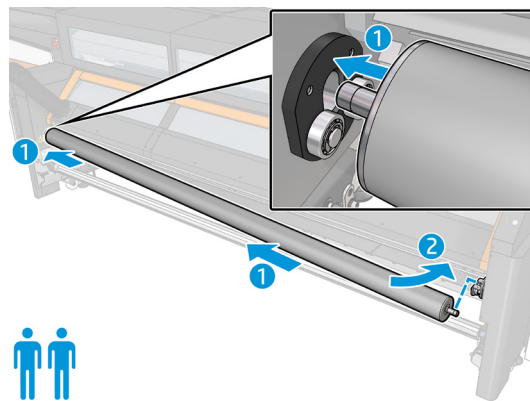




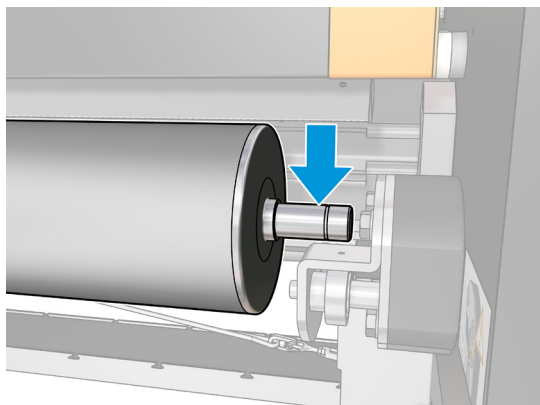
6 选择正确的滚筒配置：分散转向器或光面转向器。



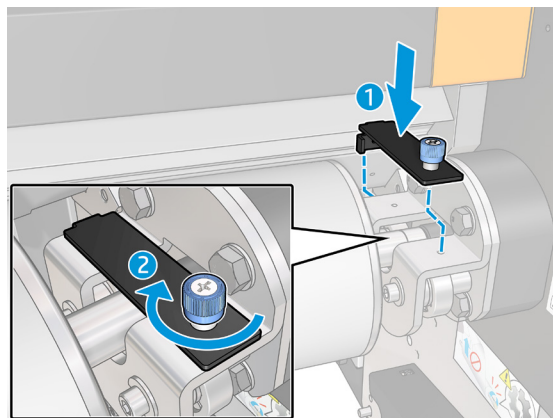
7 通过向左按，将滚筒插在左支架上。



8 通过向下按右支架，使滚筒保持水平。



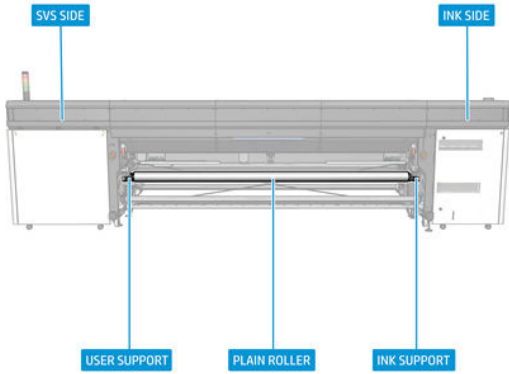
9 拧紧螺钉，将安全门锁安装在右支架上。



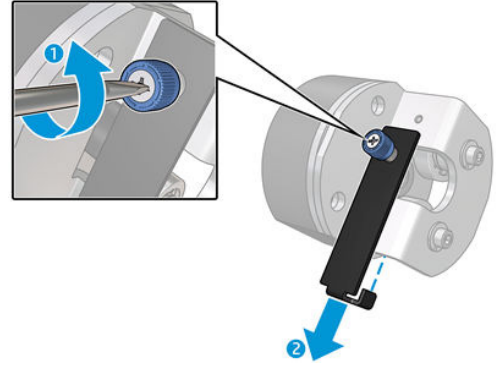


# HP Latex 2700 打印机系列的过程

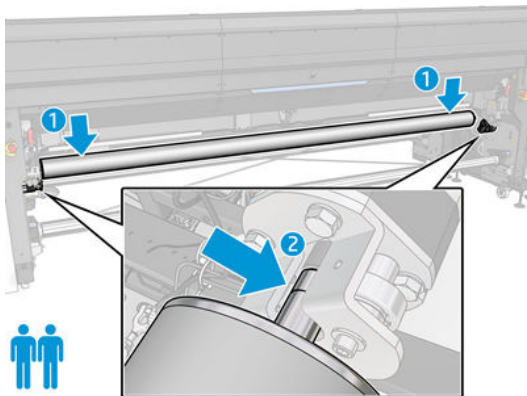
1 取出任何介质。



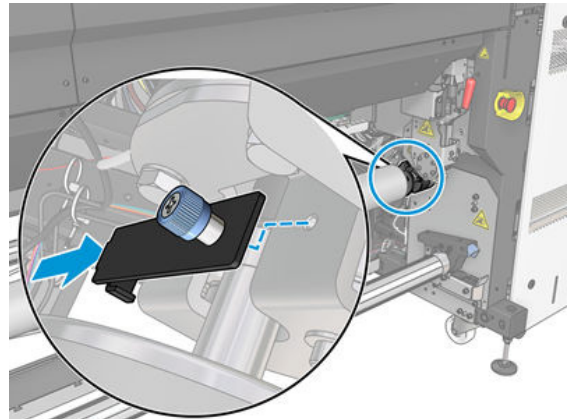
2 拧松螺钉，从两侧卸下压板。



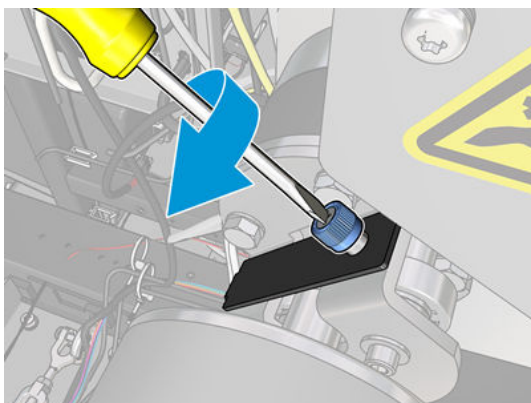
3 在另一个人的帮助下插入光面滚筒。确保它可装入两侧。



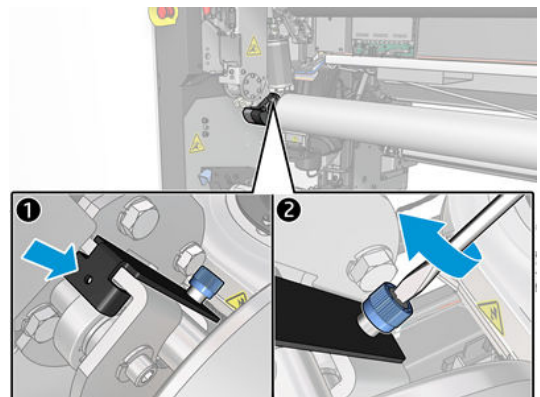
4 在两个支架上都正确插入光面滚筒后，放回两个支架的黑色压板。



5 拧紧黑色压板的螺钉。



6 放回用户支架的黑色压板，然后拧紧该螺钉。



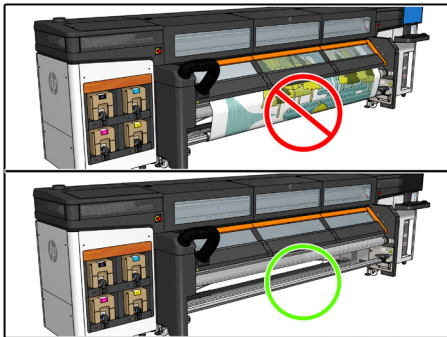




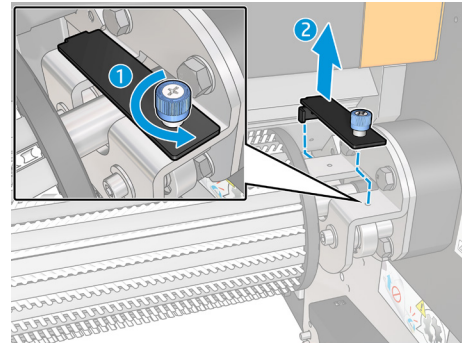
# HP Latex 2700 印表機系列和 HP Stitch S1000 印表機系列的 HP 126 英吋分紙器滾筒

## HP Stitch S1000 印表機系列的程序

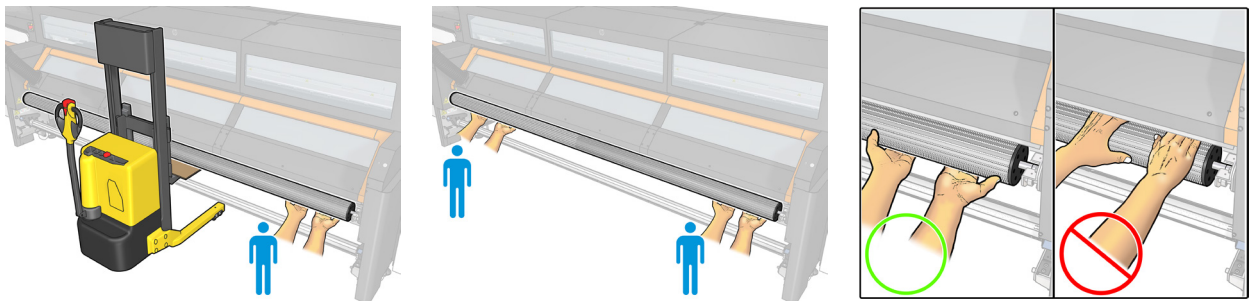
1 卸載各種媒材。



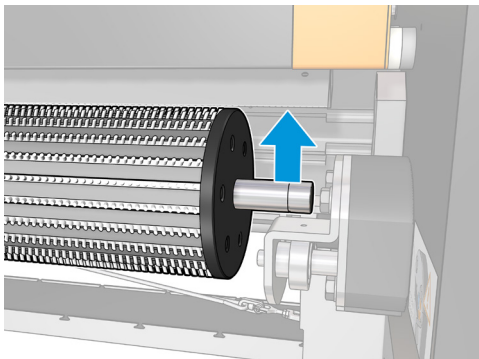
2 解開螺絲，卸載右側的門鎖。



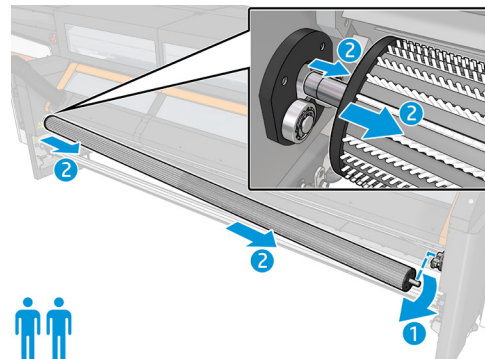
3 二名操作員，或一名操作員搭配推車。只握住底部滾筒；絕對不可將手放入滾筒和接觸式加熱器邊緣之間。



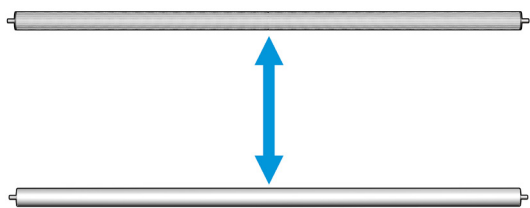
4 從右手邊抬高。



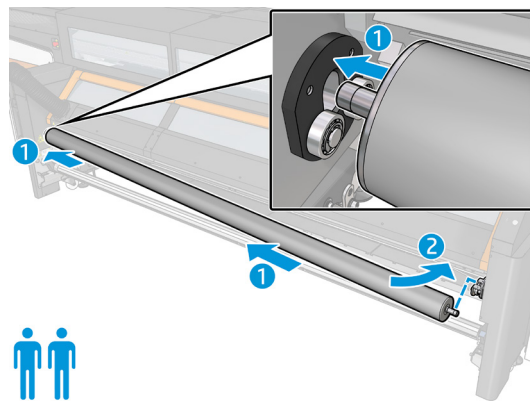
5 將滾筒往右拉將其卸載。



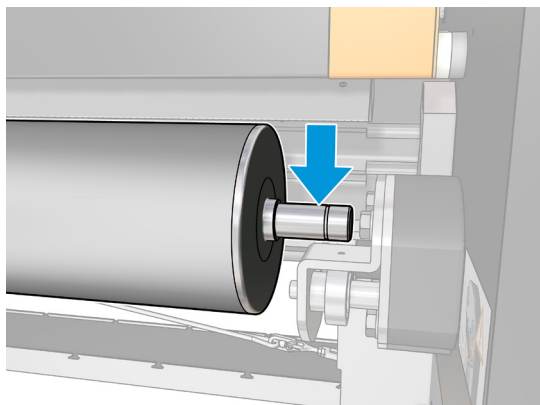
6 選取正確的滾筒組態：塗抹或普通分紙器。



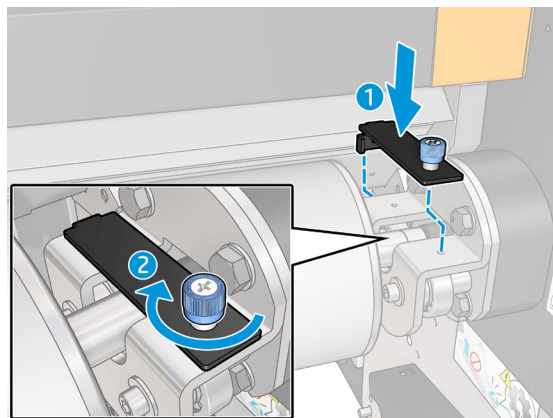
7 將滾筒往左側推，以便插入左支柱。



8 往下推往右支柱，達到滾輪高度。

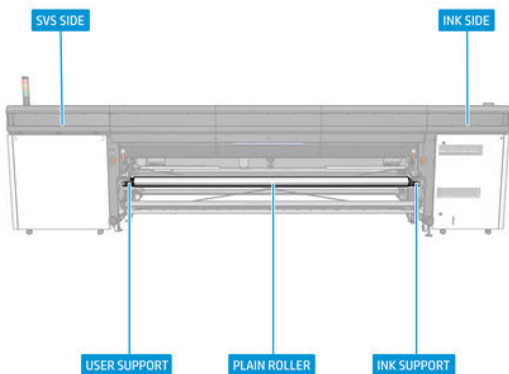


9 鎖上螺絲，安裝右支柱的安裝門鎖。

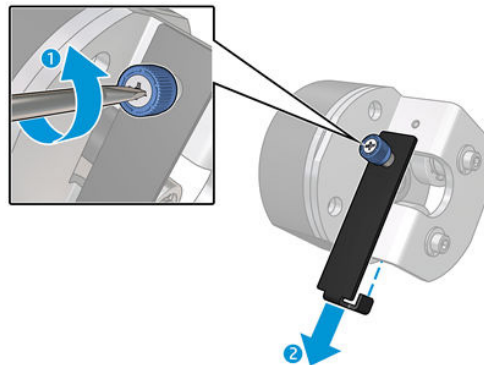


# HP Latex 2700 印表機系列的程序

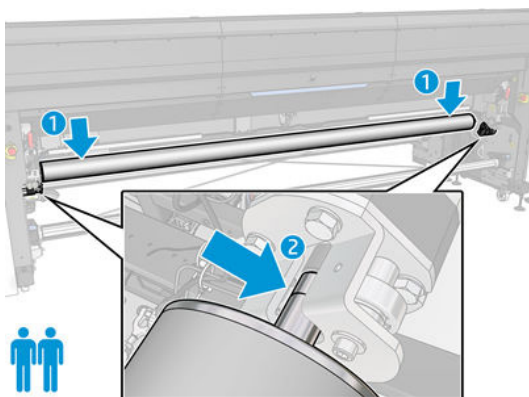
1 卸載各種媒材。



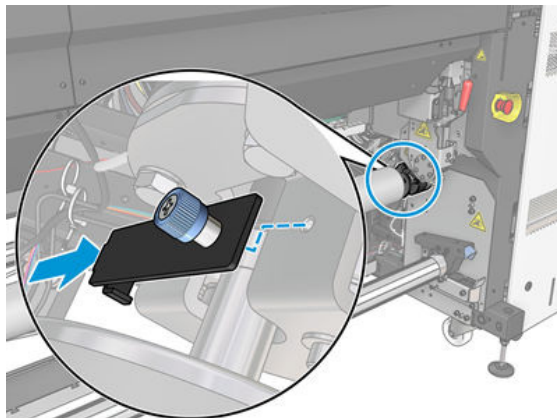
2 解開螺絲，同時卸載二側的門鎖。



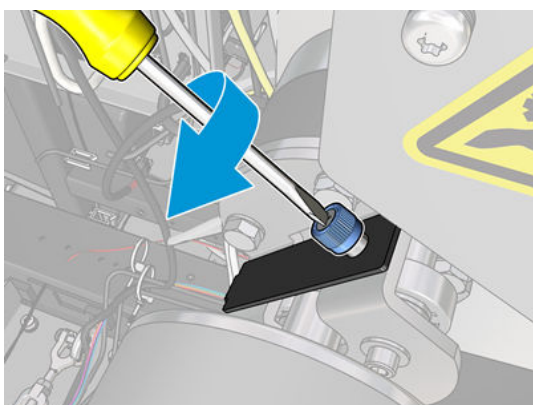
3 由另外一人協助，插入普通滾輪。確定二側均妥善安裝。



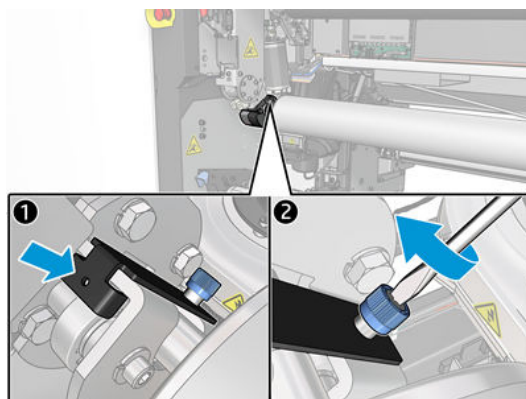
4 當普通滾輪正確插入二側支柱後，裝回兩根支柱的黑色板。



5 鎖緊黑色板的螺絲。



6 裝回使用者支柱的黑色板，並鎖上螺絲。





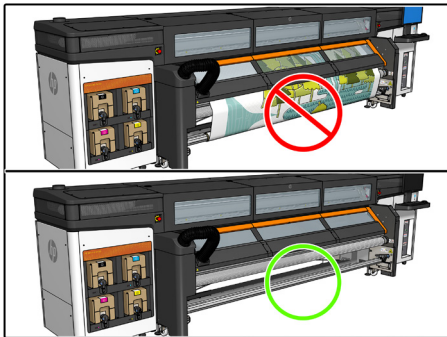




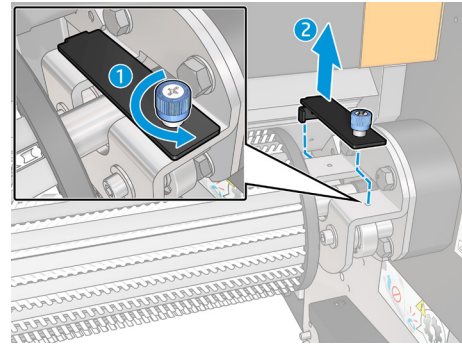
# HP Latex 2700 프린터 시리즈 및 HP Stitch S1000 프린터 시리즈용 HP 126인치 전환기 롤러

## HP Stitch S1000 프린터 시리즈용 절차

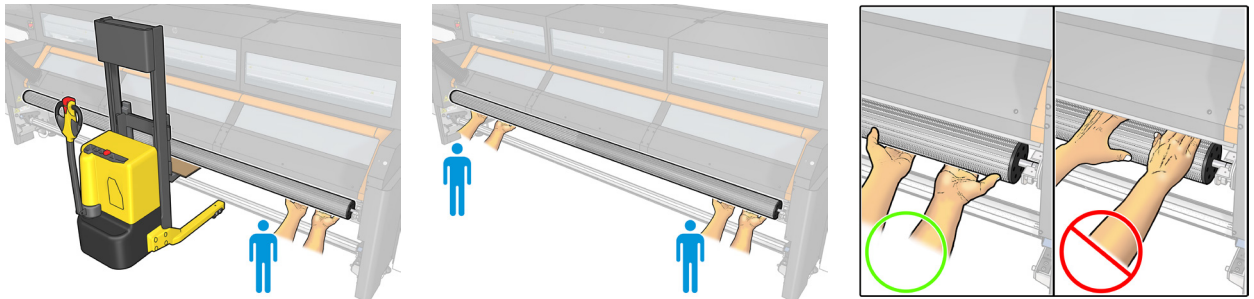
1 모든 용지를 꺼내십시오.



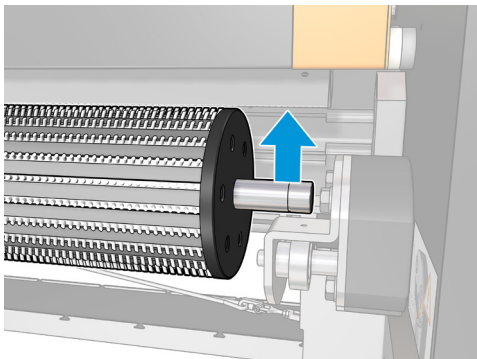
2 나사를 풀어 오른쪽에서 걸쇠를 제거합니다.



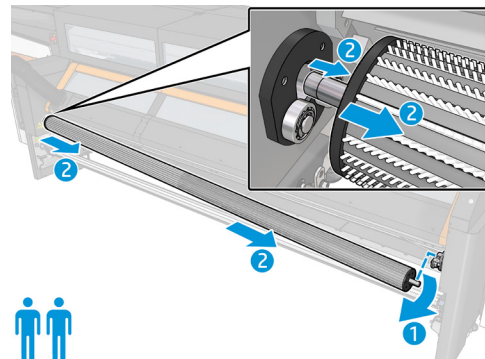
3 두 명의 작업자 또는 한 명의 작업자와 트롤리가 필요합니다. 롤러는 아래에서만 잡으십시오. 롤러와 접촉 히터 가장자리 사이에 손을 넣지 마십시오.



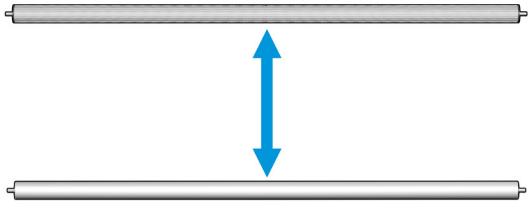
4 오른쪽에서 올립니다.



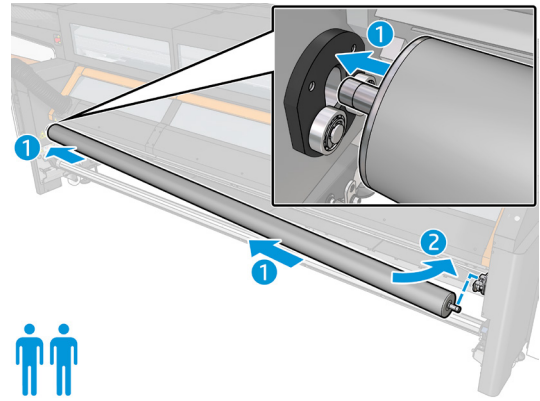
5 롤러를 오른쪽으로 당겨 제거합니다.



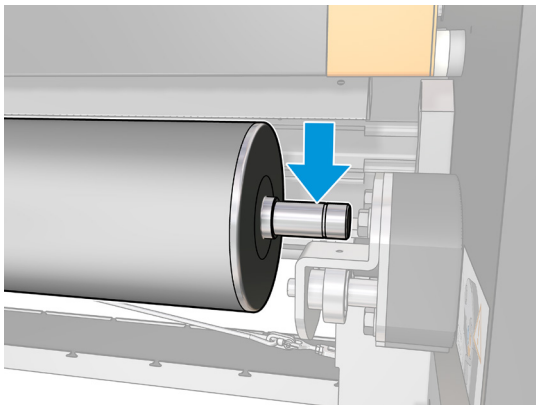
6 적절한 롤러 구성(스프레드 또는 일반 전환기)을 선택합니다.



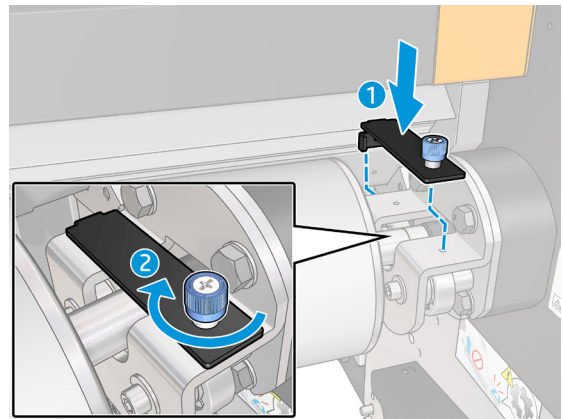
7 롤러를 왼쪽을 향해 밀어 왼쪽 지지대에 삽입합니다.



8 오른쪽 지지대를 아래로 눌러 롤러의 수평을 맞춥니다.

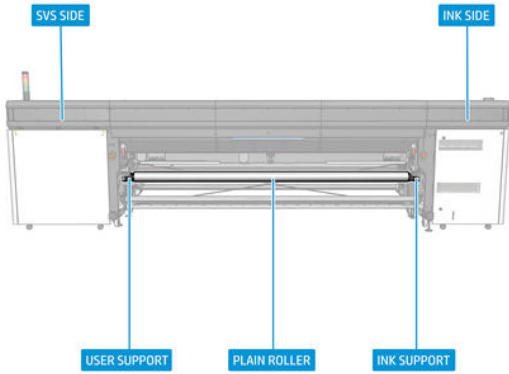


9 나사를 사용하여 오른쪽 지지대에 안전 걸쇠를 설치합니다.

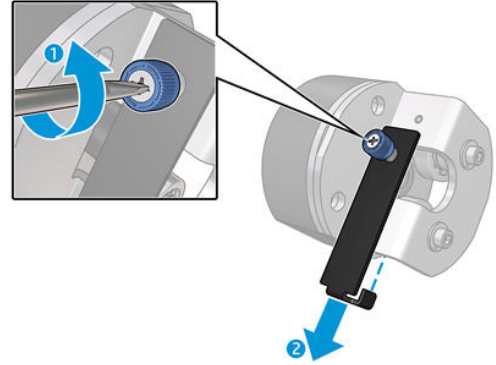


# HP Latex 2700 프린터 시리즈용 절차

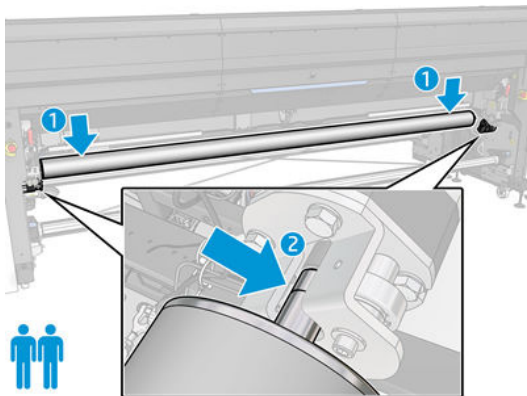
1 모든 용지를 꺼내십시오.



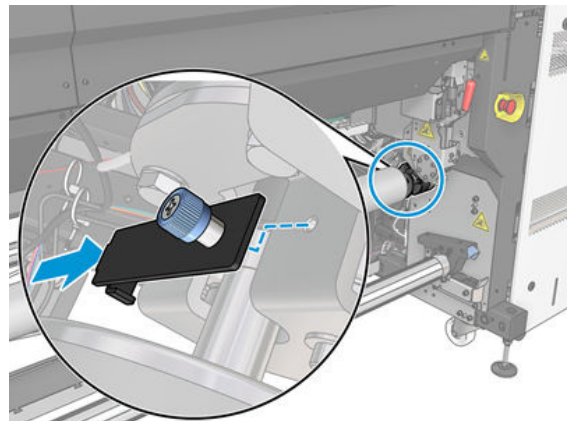
2 나사를 풀어 양쪽에서 걸쇠를 제거합니다.



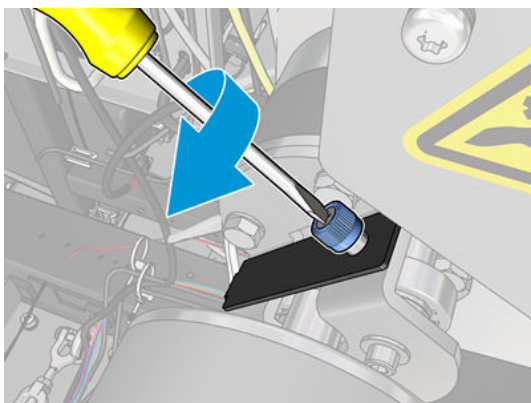
3 다른 사람의 도움을 받아 일반 롤러를 삽입합니다. 양쪽에 맞는지 확인합니다.



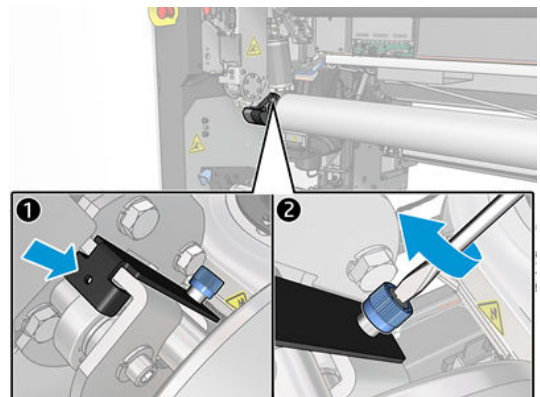
4 일반 롤러가 양쪽 지지대에 올바르게 삽입되면 양쪽 지지대의 검은색 플레이트를 다시 넣습니다.



5 검은색 플레이트의 나사를 조입니다.



6 사용자 지지대의 검은색 플레이트를 다시 넣고 나사를 조입니다.



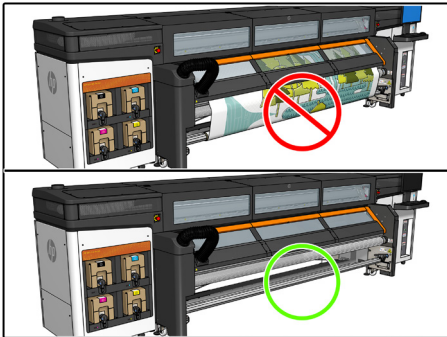




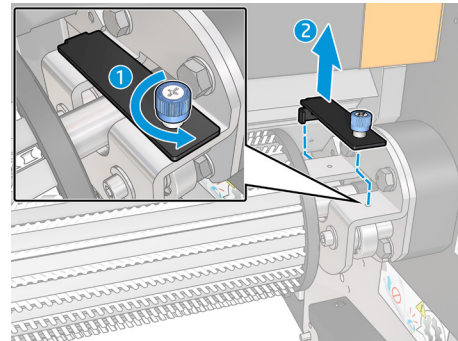
# HP 126-inch diverterrol voor de HP Latex 2700-printerserie en HP Stitch S1000-printerserie

## Procedure voor HP Stitch S1000-printerserie

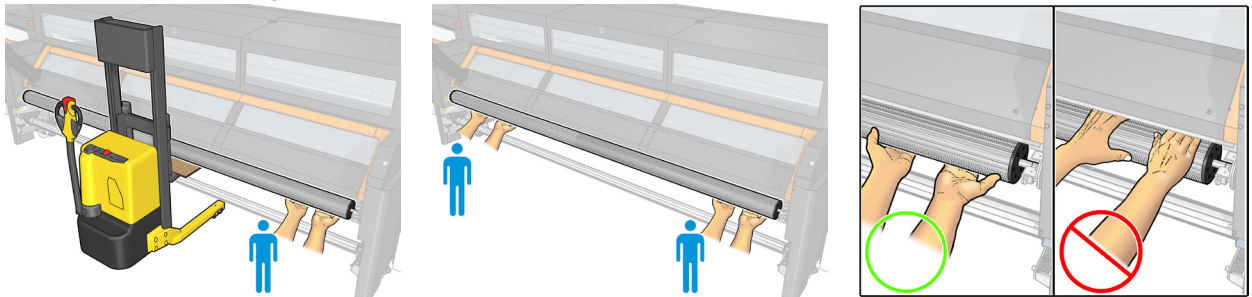
1 Verwijder alle media.



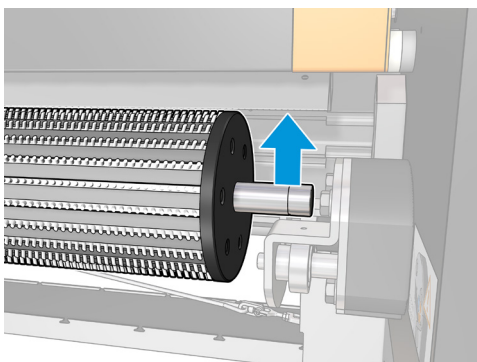
2 Neem de vergrendeling aan de rechterkant uit door deze los te draaien.



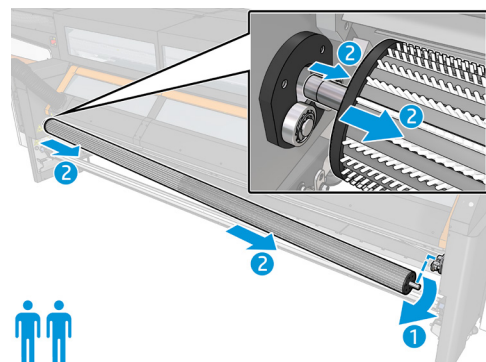
3 Doe dit met twee personen, of één persoon en een trolley. Houd de roller alleen vanaf de onderkant vast; steek nooit uw hand tussen de rol en de rand van de contactverwarming.



4 Til omhoog vanaf de rechterkant.

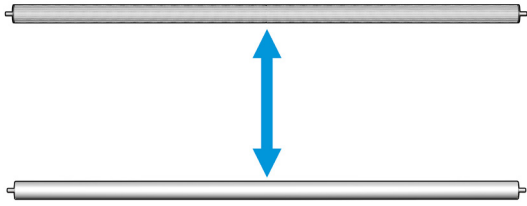


5 Trek de roller naar rechts om deze uit te nemen.

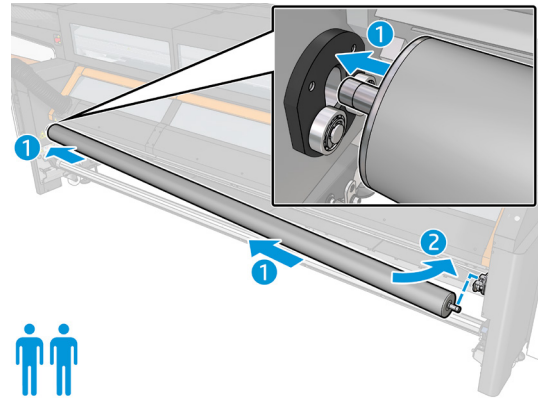




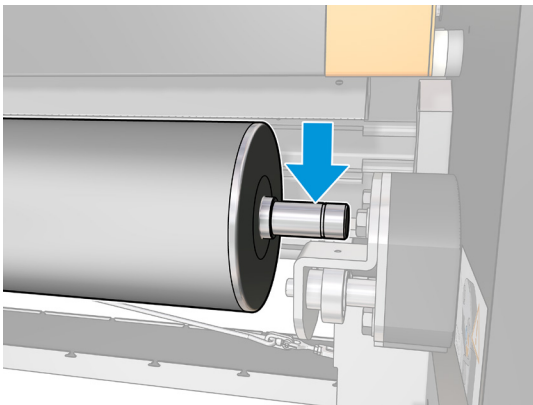
- 6 Selecteer de juiste rollerconfiguratie: verspreid of normale diverter.



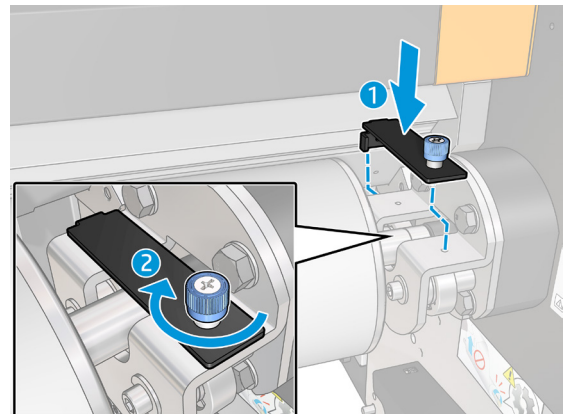
- 7 Plaats de roller op de linkersteun door naar links te duwen.



- 8 Breng de roller op zijn plaats door de rechtersteun naar beneden te duwen.



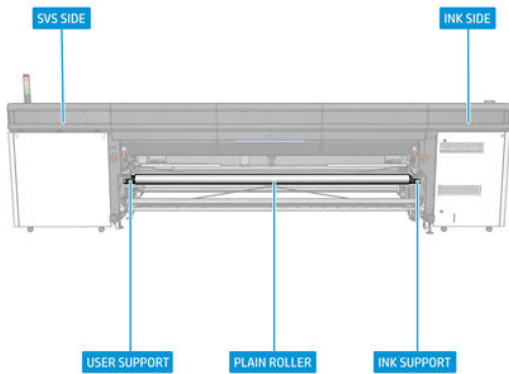
- 9 Bevestig de veiligheidsvergrendeling op de rechtersteun door deze vast te schroeven.



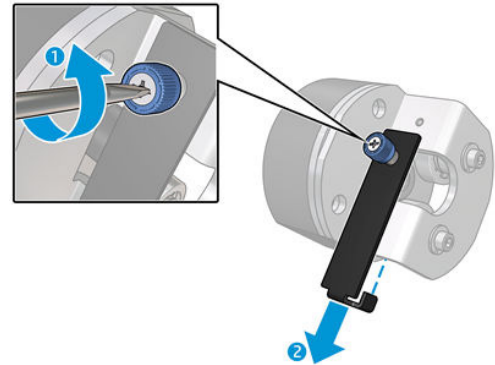


# Procedure voor HP Latex 2700-printerserie

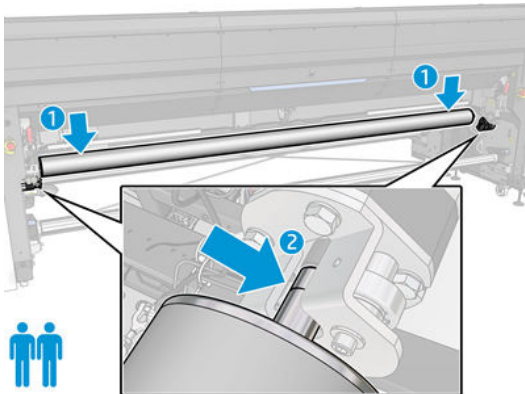
- 1 Verwijder alle media.



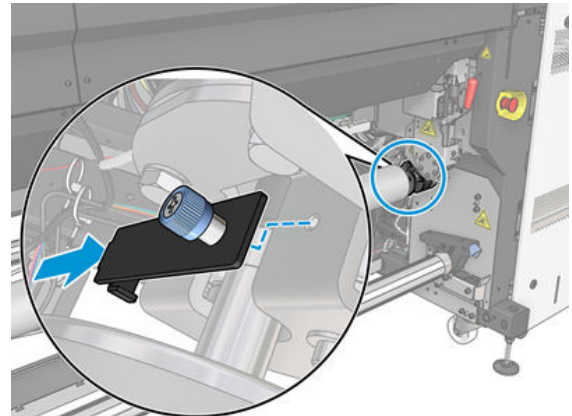
- 2 Neem de vergrendeling aan beide kanten uit door deze los te draaien.



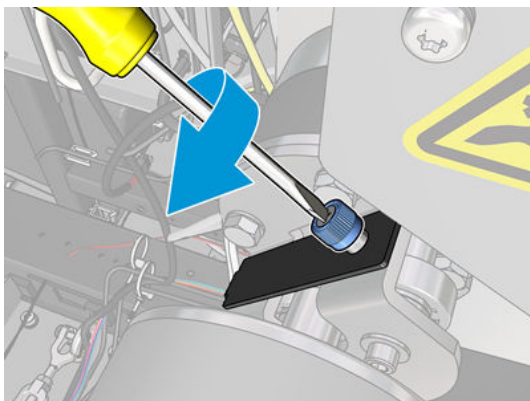
- 3 Plaats de normale roller met hulp van een tweede persoon. Controleer of deze aan beide zijden past.



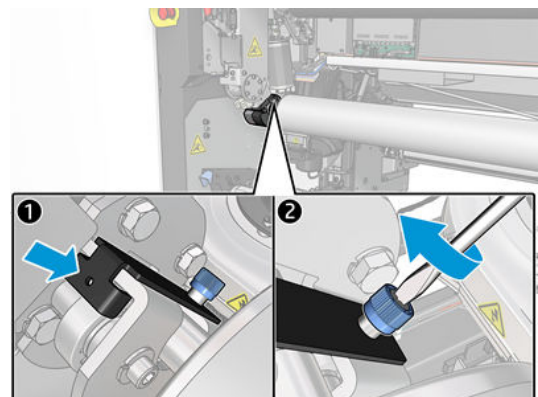
- 4 Zet de zwarte plaat van beide steunen terug wanneer de normale roller correct op beide steunen is geplaatst.



- 5 Draai de schroef van de zwarte plaat aan.



- 6 Zet de zwarte plaat van de gebruikersondersteuning terug en draai de schroef aan.



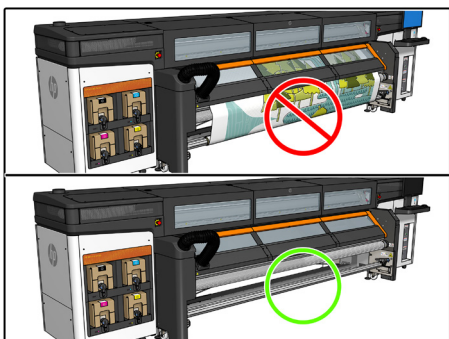




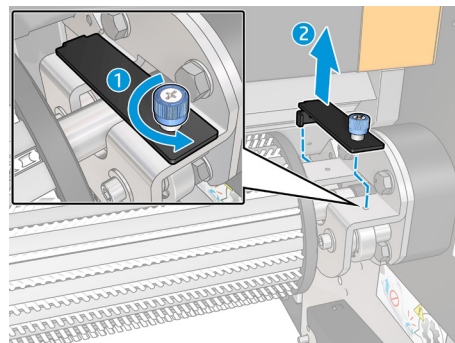
# 126-дюмовый отводящий ролик HP для принтеров серий HP Latex 2700 и HP Stitch S1000

## Процедура для принтеров серии HP Stitch S1000

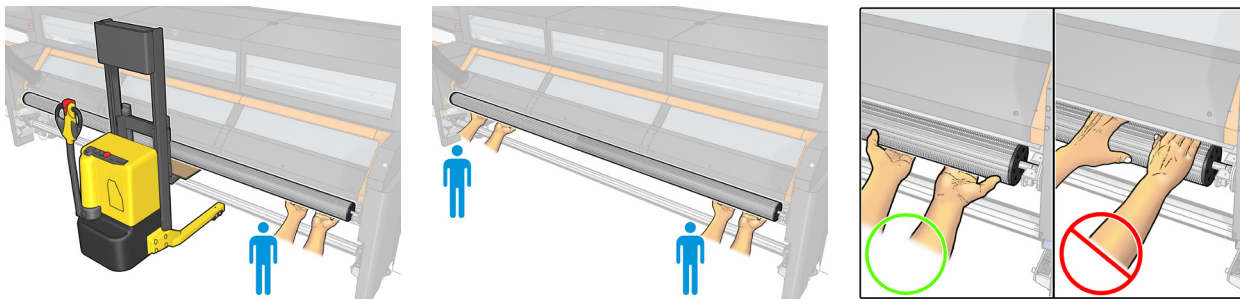
1 Извлеките все носители.



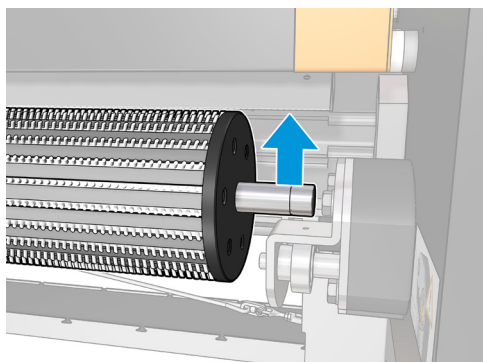
2 Отвинтите фиксатор с правой стороны.



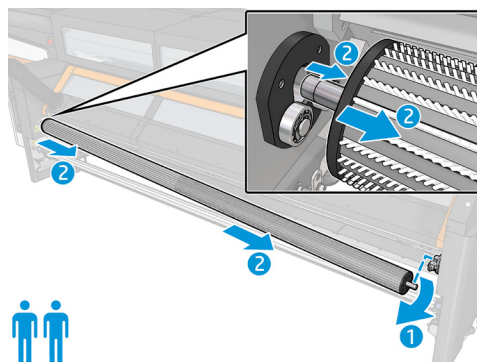
3 Процедуру должны выполнять два оператора или один оператор, использующий тележку. Удерживайте ролик только снизу; никогда не помещайте руку между роликом и краем контактного нагревателя.



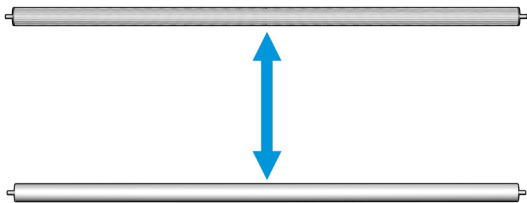
4 Поднимите с правой стороны.



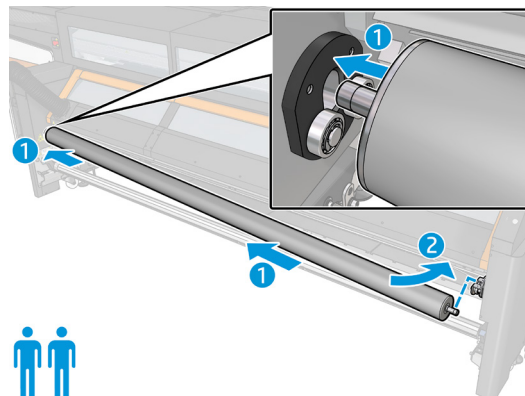
5 Потяните ролик вправо, чтобы извлечь его.



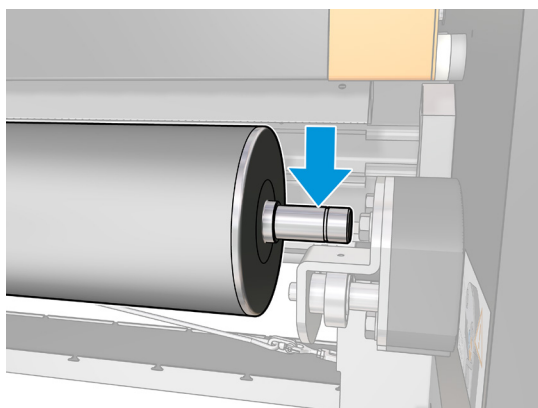
- 6 Выберите надлежащую конфигурацию ролика: выравнивающий или плоский отводящий ролик.



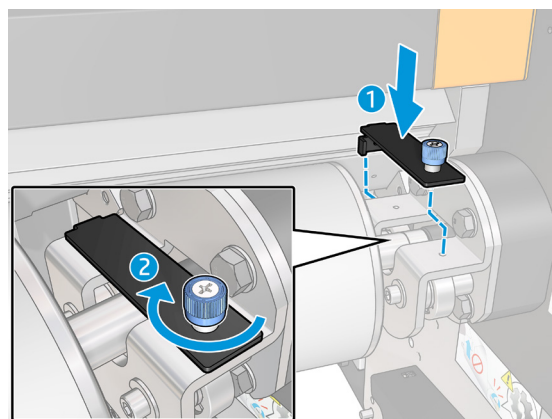
- 7 Вставьте ролик в левую опору, толкнув влево.



- 8 Выровняйте ролик, нажав на правую опору.

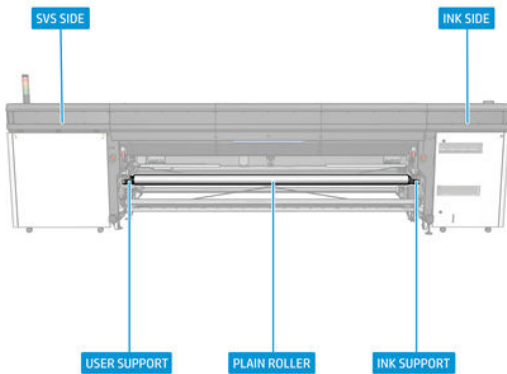


- 9 Установите фиксатор-предохранитель на правую опору и завинтите его.

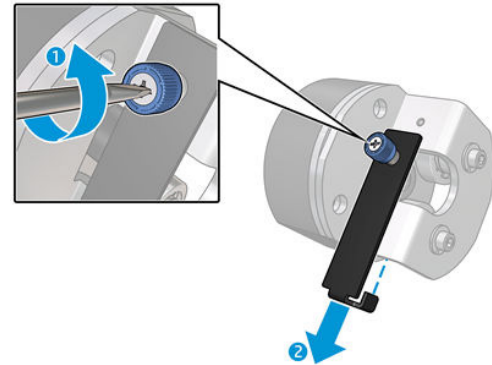


# Процедура для принтеров серии HP Latex 2700

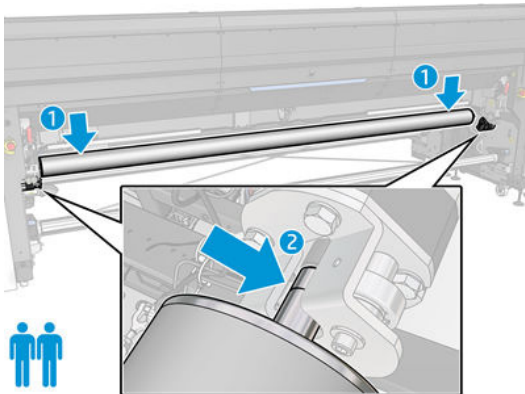
- 1 Извлеките все носители.



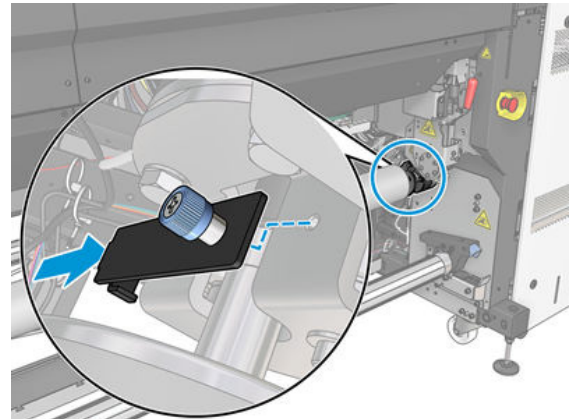
- 2 Отвинтите фиксатор с обеих сторон.



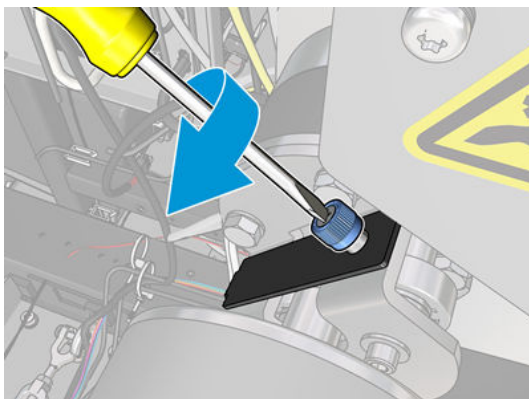
- 3 Установите плоский ролик с помощью другого человека. Убедитесь, что он выровнен с обеих сторон.



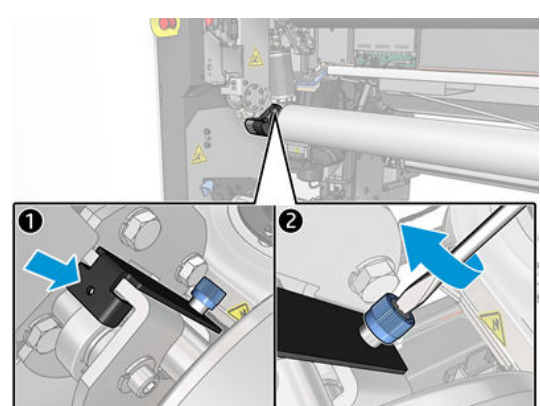
- 4 Установите на место черную пластину обеих опор после надлежащей установки плоского ролика на обеих опорах.



- 5 Затяните винт черной пластины.



- 6 Установите на место черную пластину пользовательской опоры и затяните винт.





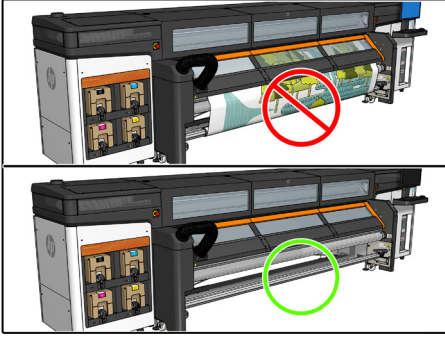




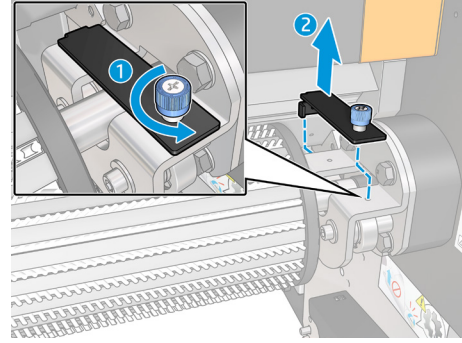
# HP Latex 2700 Yazıcı Serisi ve HP Stitch S1000 Yazıcı Serisi için HP 126 inç Yönlendirici Silindiri

## HP Stitch S1000 Yazıcı Serisi için Prosedür

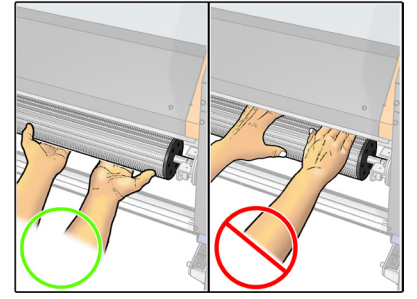
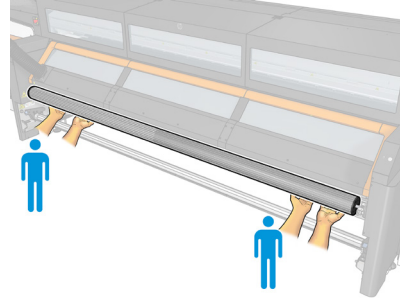
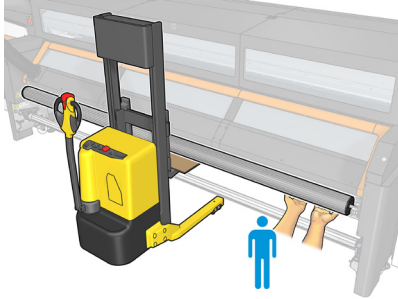
1 Tüm ortamı boşaltın.



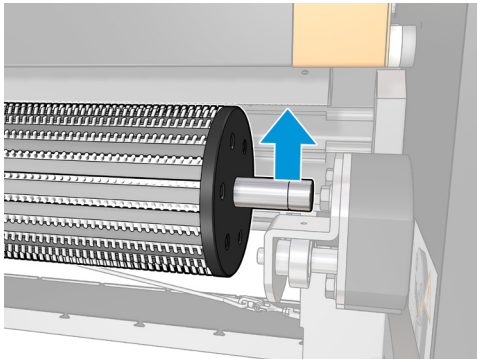
2 Vidayı çıkartarak mandalı sağ taraftan sökün.



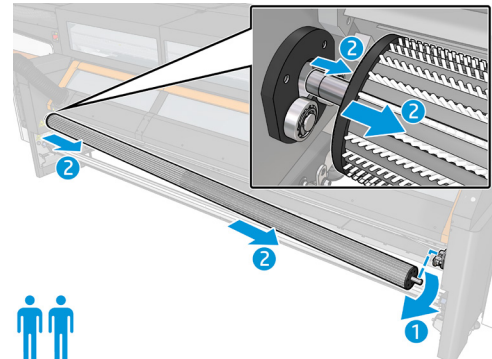
3 İki operatör veya bir operatör ve bir yük arabası kullanın. Silindiri yalnızca alttan tutun; elinizi silindir ile kontak ısıtıcısı kenarının arasına asla koymayın.



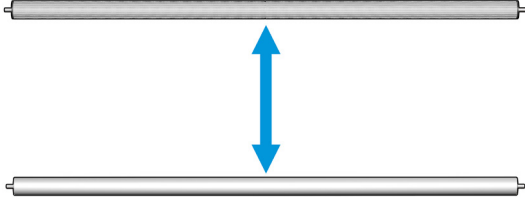
4 Sağ taraftan yükseltin.



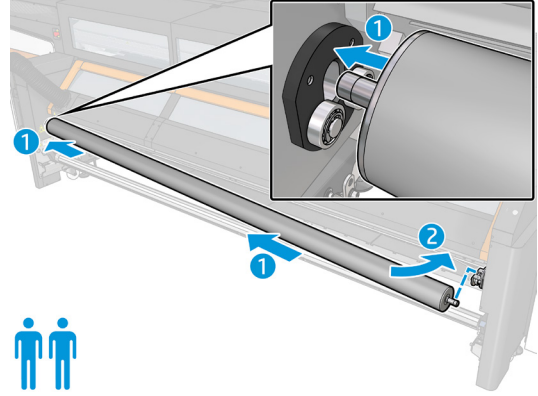
5 Çıkarmak için silindiri sağa doğru çekin.



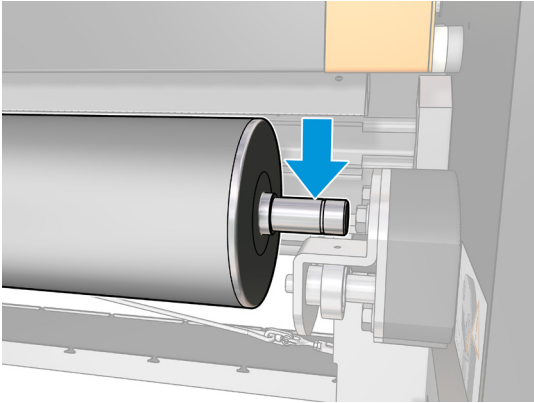
- 6 Uygun silindir yapılandırmasını seçin (yayma veya düz yönlendirici).



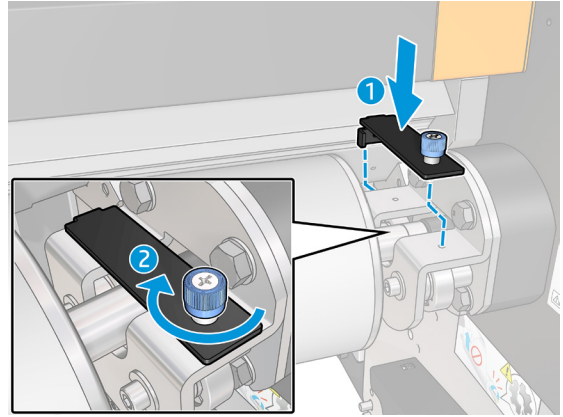
- 7 Silindiri sola doğru iterek sol desteğin üzerine takın.



- 8 Sağ desteğin üzerine iterek silindiri düz konuma getirin.

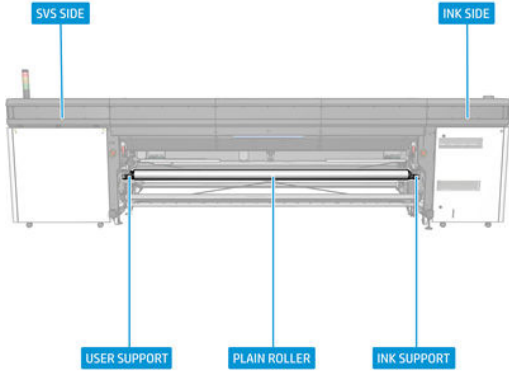


- 9 Güvenlik mandalını vidalayarak sağ desteğin üzerine takın.

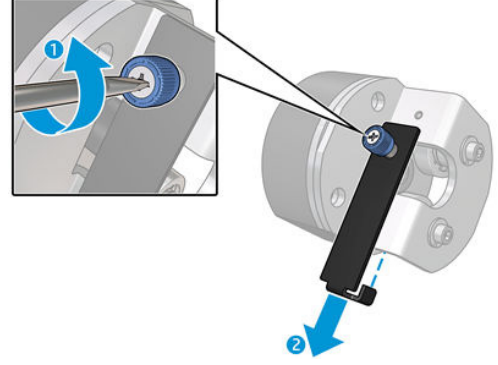


# HP Latex 2700 Yazıcı Serisi için Prosedür

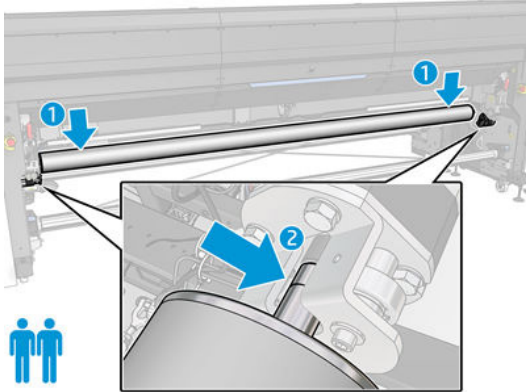
1 Tüm ortamı boşaltın.



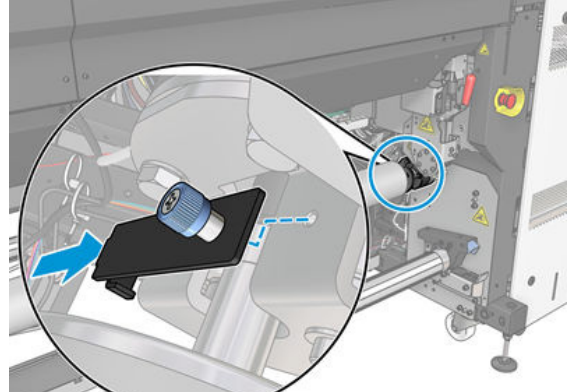
2 Vidayı çıkartarak mandalı her iki taraftan sökün.



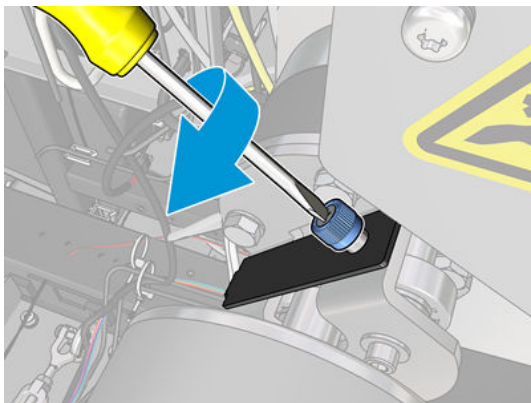
3 Düz Silindiri başka bir kişinin yardımı ile takın. Her iki tarafa da oturduğundan emin olun.



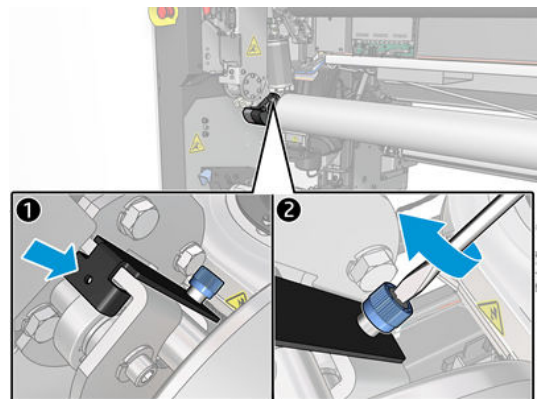
4 Düz Silindir her iki desteğe de düzgün şekilde takıldıktan sonra her iki desteğin siyah plakasını geri takın.



5 Siyah plakanın vidasını sıkın.



6 Kullanıcı desteğinin siyah plakasını geri takın ve vidayı sıkın.







© Copyright 2022 HP Development Company, L.P.  
Large Format Division  
Camí de Can Graells 1-21  
08174 · Sant Cugat del Vallès  
Barcelona · Spain  
All rights reserved  
Printed in XXX



4R4W7-90001