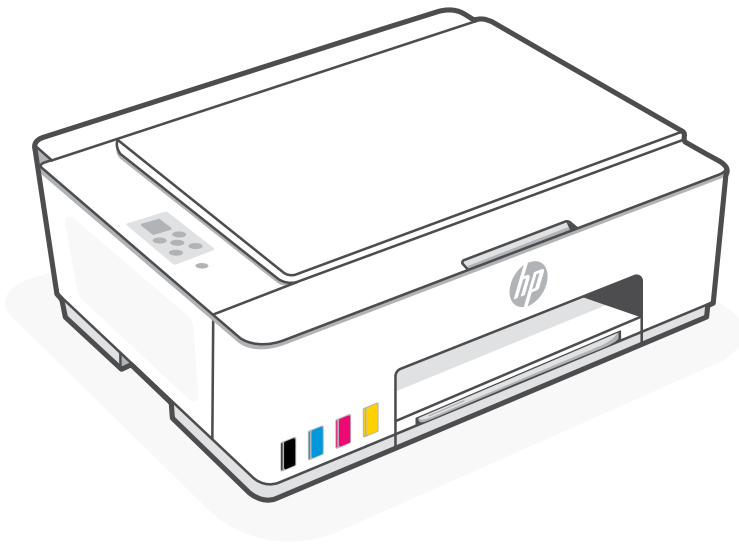




# Setup and Reference Guide

---

<b>ES</b>	Guía de referencia y configuración (Lea ésto primero)	-----	9
<b>PT</b>	Guia de configuração e referência	-----	15

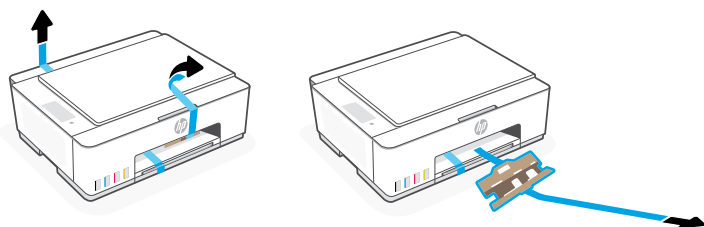


## HP Smart Tank 520, 540 series

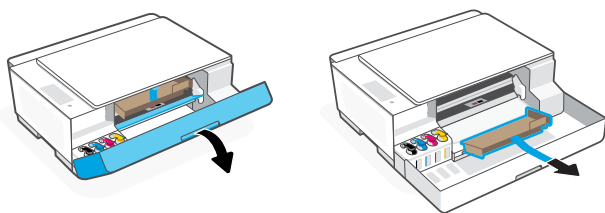
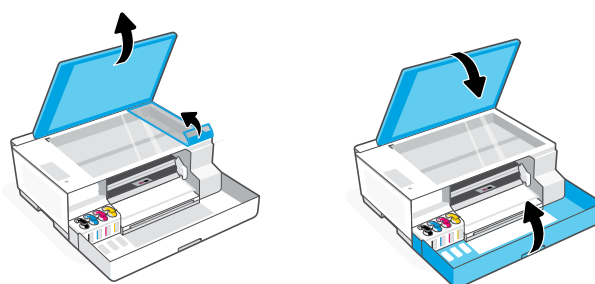


## 1 Remove packaging and power on

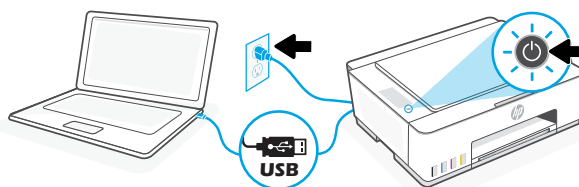
1. Remove all the tape and packing materials.  
**Note:** Keep the packaging materials for repacking in case you need to move the printer.



2. Open the scanner lid and remove the film. Close the scanner lid and front door.



3. Connect the printer to your computer using a USB cable. Plug in and power on the printer. Keep it on during setup.



## 2 Choose an option for setting up your printer

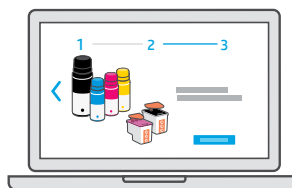
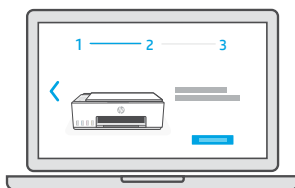
### Recommended

### Option 1: Guided setup with HP Smart

1. Go to [123.hp.com](https://123.hp.com) on your computer to install the HP Smart software.



2. Open **HP Smart**. If prompted, create or sign in to an HP account.
3. On the Home screen, choose the option to add a printer and follow the onscreen instructions. If the software is unable to find your printer, see the **Help for USB connectivity issues during setup (Windows)** section in this guide.
4. View animations to fill ink tanks, install printheads, load paper, and perform printheads alignment in HP Smart.



### Option 2: Manual setup



Follow the illustrations in this guide to set up the hardware and install the HP Smart software. With HP Smart, you can print, scan, and access all printer features.

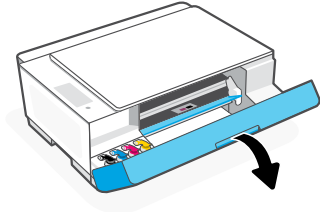


# Manual Setup

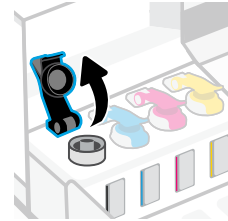
## 1 Fill the ink tanks



1. Open the front door.



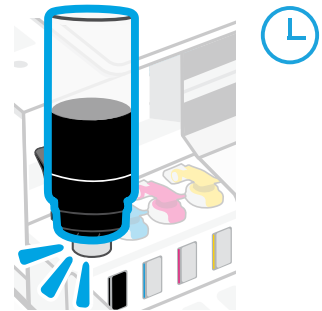
2. Open the cap of the ink tank you want to fill.



3. Twist open the ink bottle.

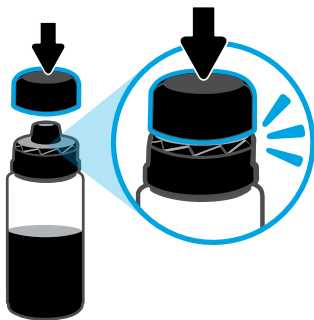


4. Place the bottle upside down onto the tank and click into place. Wait for the ink to fill the tank.  
**Note:** The black bottle will have ink left in the bottle.

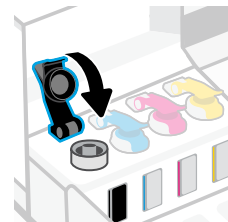


5. Close the ink bottle, firmly pushing the cap onto the bottle.

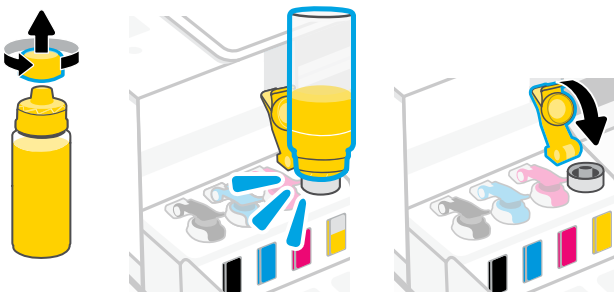
**Note:** If there is ink left in the bottle, close the bottle properly and store upright in a cool, dark place.




6. Securely close the tank cap.

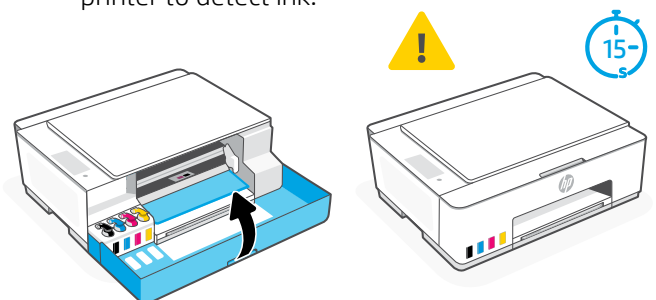


7. Repeat to fill all tanks.



8. Close the front door.

 Wait approximately 15 seconds for the printer to detect ink.



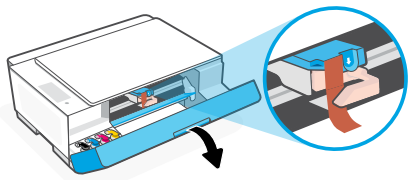
## 2 Install printheads



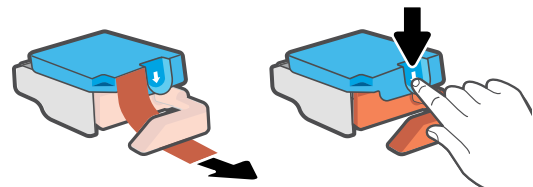
Before installing printheads, ensure the following:

- The printer is on.
- All four ink tanks are filled.
- You have closed the front door for approximately 15 seconds after filling ink.

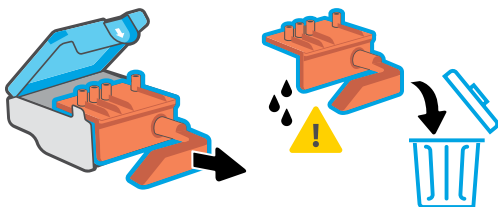
1. Open the front door. Make sure the print carriage has moved to the center; if not, close the door for 15 seconds.



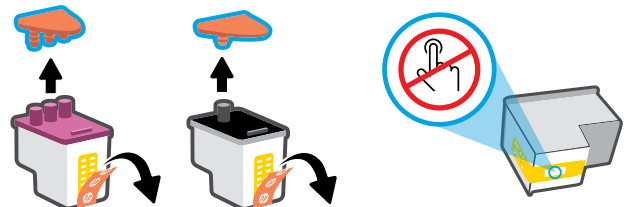
2. Remove the orange tape from the printhead cover. Press and release the blue latch to open the printhead cover.



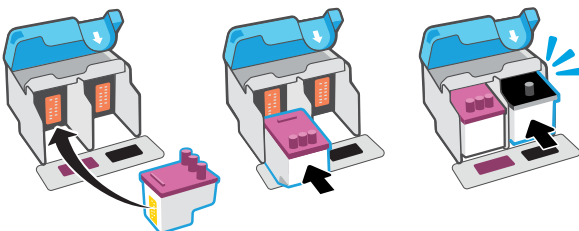
3. Remove and discard the orange guard.  
**Note:** Keep the guard upright; handle carefully to avoid ink leaks.



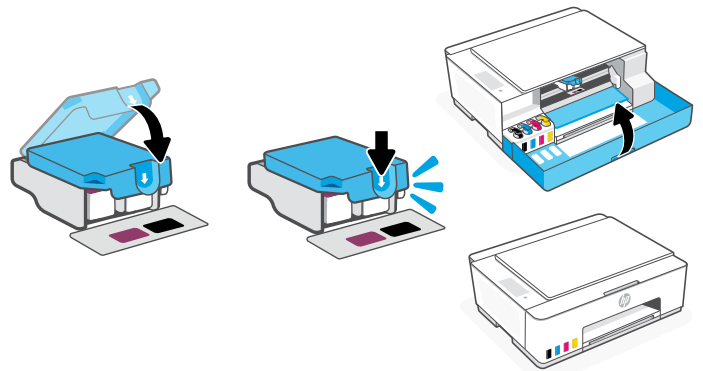
4. Remove the orange cap and tape from both printheads.  
**Caution:** Do not touch the electric contacts or print nozzles under the tape.



5. Insert the printhead and click into place. Repeat to install the other printhead.  
**Note:** Make sure the electric contacts are facing inside.

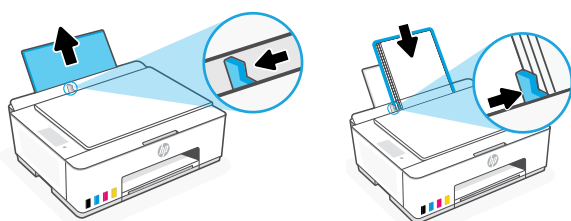


6. Close the printhead cover and the front door.  
**Note:** Make sure the printhead cover is properly closed.

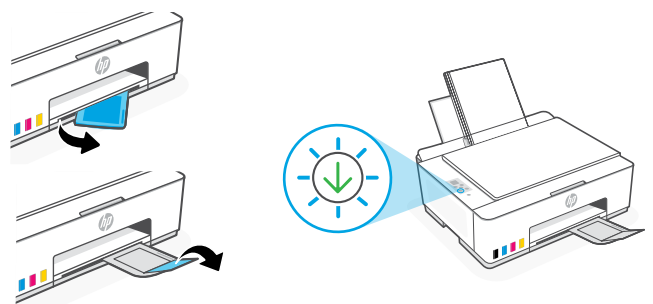


## 3 Load paper

1. Pull up the paper tray, and slide out the paper guide. Load new, unused Letter or A4 paper, and adjust the paper guide.

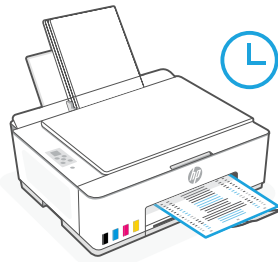



2. Open the output tray extender. Press the blinking Resume button



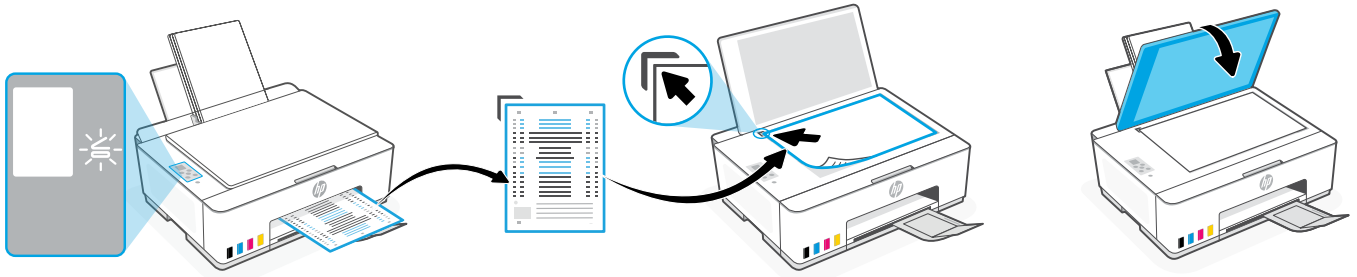
## 4 Scan the printhead alignment page

1. After loading paper, wait for the alignment page to print.



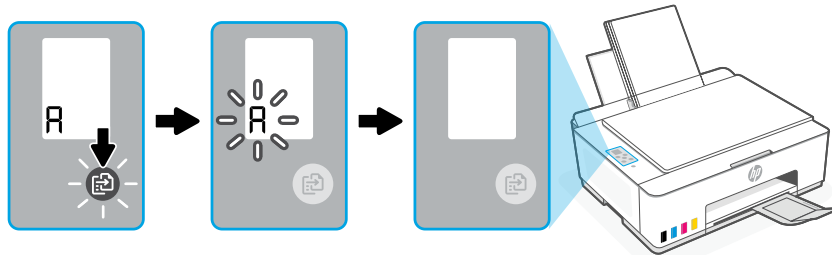
2. When the **Open Lid** light  blinks, open the scanner lid and place the printed page face-down on the scanner glass, aligned to the indicated corner. Close the scanner lid.

**Note:** Make sure you scan the alignment page printed by the printer.



3. Press the blinking copy button to scan the page.

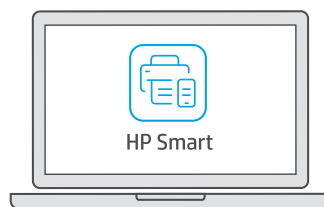
On the printer display, the icon "A" blinks during the scan and disappears when alignment is done.



Printer hardware setup is complete after printhead alignment is done.

## 5 Install the HP Smart software

1. Install the HP Smart software from [123.hp.com](https://123.hp.com) on your computer.



[123.hp.com](https://123.hp.com)

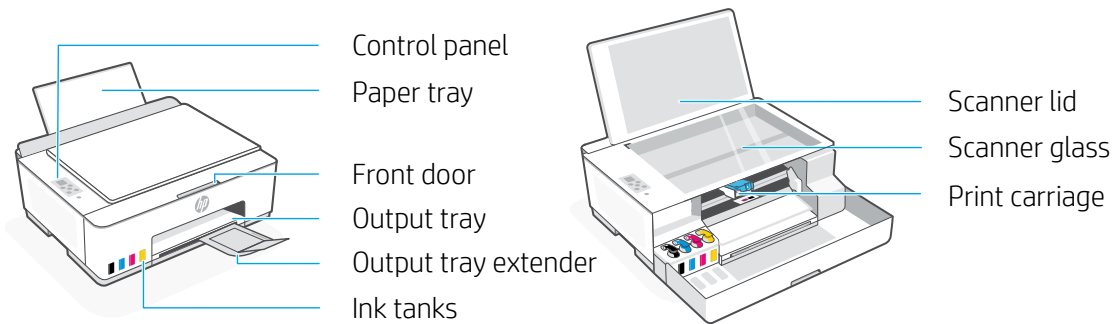
2. Open **HP Smart**. If prompted, create or sign in to an HP account.
3. On the Home screen, choose the option to add a printer and follow the onscreen instructions.  
If the software is unable to find your printer, see the **Help for USB connectivity issues during setup (Windows)** section in this guide.



Get help with setup  
Find setup information and videos online.  
[hp.com/support/printer-setup](https://hp.com/support/printer-setup)











# Printer Reference

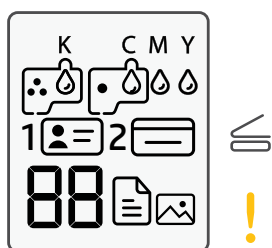



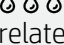


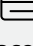

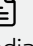

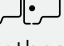
## Control panel buttons and lights



-  **Power** button  
Turn the printer on or off.
-  **Open Lid** light  
Open the scanner lid to copy or scan.
-  **Attention** light  
Indicates problems with paper, ink, or printheads.
-  **Color Copy** button  
Start color copying.
-  **Black Copy** button  
Start black-and-white copying.  
**Note:** For multiple copies, press multiple times or press and hold.
-  **ID Copy** button  
Place a card anywhere on scanner glass to copy both sides onto same page.
-  **Resume** button  
Resume a job after a disruption
-  **Cancel** button  
Cancel the current job.

## Control panel display



-  **K C M Y**  
  
Ink related issues, including low on ink.
-   
Photo Copy mode for copying on photo paper.
- 1**   
Place the front of ID card on scanner glass.
- 2**   
Place the back of ID card on scanner glass.
-    
Media related issues, including out of paper.
- E1/E2**  
Paper size/length mismatch.
- E3**  
Print carriage jam or printhead cover not closed.
- E4**  
Paper jam.
- E7**  
Out of ink.
-    
Printheads related issues.  
**Note:** Do not open the printhead cover unless instructed.

## Help for USB connectivity issues during setup (Windows)

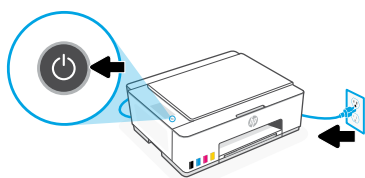
If the software is unable to find your printer during setup, check the following conditions to resolve the issue.

Potential Issue	Solution
HP software is unable to find the printer	<ol style="list-style-type: none"><li>1. Try searching again and wait patiently. The software can only find the printer after the drivers have been fully installed. This might take up to 10 minutes.</li><li>2. To check the driver installation status:<ol style="list-style-type: none"><li>a. Open <b>Control Panel</b> on your Windows computer.</li><li>b. Select <b>Devices and Printers</b> and find your new printer. A loading icon will be displayed during installation. When installation is complete, you will get a Windows notification.</li></ol></li><li>3. Return to the HP software and search again.</li><li>4. Select the printer when it appears. Follow the instructions in the software to complete setup.</li></ol>
Windows operating system is out of date	<p>If the HP software is still unable to find the printer after following the above steps:</p> <ol style="list-style-type: none"><li>1. Make sure your computer operating system is up to date. If an update is available, install the latest version.<ul style="list-style-type: none"><li>• If your update preference is turned off, turn on computer updates.</li><li>• An older version of the operating system might take longer to install drivers.</li><li>• You might need to restart your computer after the update.</li></ul></li><li>2. After the update, open the HP software and select <b>Add Printer</b> to search again.</li><li>3. Select the printer when it appears. Follow the instructions in the software to complete setup.</li></ol>

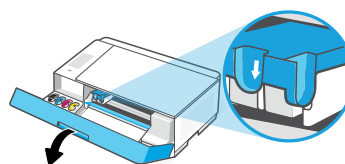
## Move printer properly to prevent ink leaks

 [hp.com/support/movingsmarttank](https://hp.com/support/movingsmarttank)

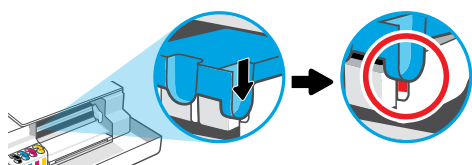
1. Turn off the printer and remove the power cord.



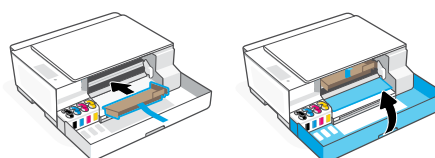
2. Open the front door. Make sure the print carriage is all the way to the left; if not, manually move it to the left.



3. Press down on the side of the printhead cover to release the cover.



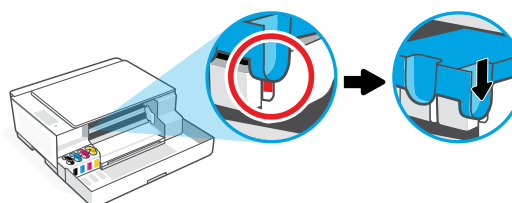
4. Insert a cardboard restraint. Close the front door.



5. Pack the printer in a box (if available). While moving the printer, keep it horizontal to prevent ink leakage.



6. After unpacking, push down the blue latch to close the printhead cover. Make sure the cover is properly closed.



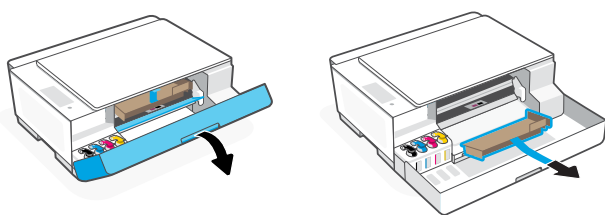
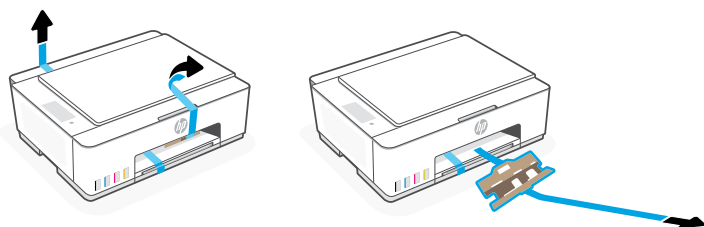
7. Connect the power cord and turn on the printer.

For printer troubleshooting and videos, visit [hp.com/support](https://hp.com/support)

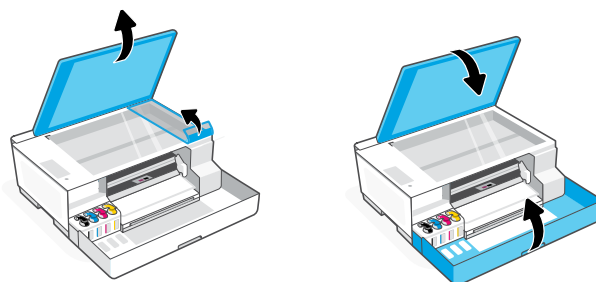


## 1 Retirada de embalaje y encendido

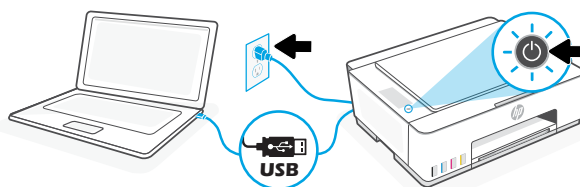
1. Retire todas las cintas y materiales de embalaje.  
**Nota:** guarde los materiales de embalaje por si fuera necesario trasladar la impresora.



2. Abra la tapa del escáner y retire la película. Cierre la tapa del escáner y la puerta delantera.



3. Conecte la impresora a su ordenador con un cable USB. Enchufe y encienda la impresora. Manténgala encendida durante la configuración.

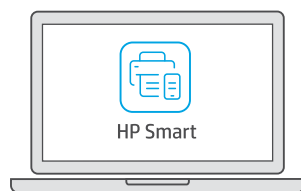


## 2 Elija una opción para configurar su impresora

### Recomendado

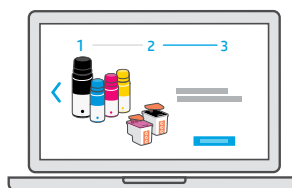
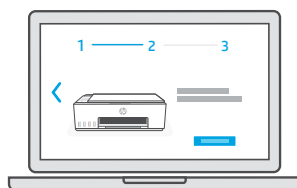
### Opción 1: configuración guiada con HP Smart

1. Vaya a [123.hp.com](http://123.hp.com) desde su ordenador para instalar el software HP Smart.



[123.hp.com](http://123.hp.com)

2. Abra **HP Smart**. Si se le solicita, inicie sesión en su cuenta HP o cree una.
3. En la pantalla inicio, seleccione la opción de agregar una impresora y siga las instrucciones que aparecen en la pantalla. Si el software no puede encontrar la impresora, consulte la sección **Ayuda para problemas de conectividad USB durante la configuración (Windows)** de esta guía.
4. Vea en HP Smart las animaciones para rellenar los depósitos de tinta, instalar los cabezales de impresión, cargar el papel y alinear los cabezales de impresión.



### Opción 2: configuración manual



Siga las instrucciones de esta guía para configurar el hardware e instalar el software HP Smart. Con HP Smart, puede imprimir, escanear y acceder a todas las características de la impresora.

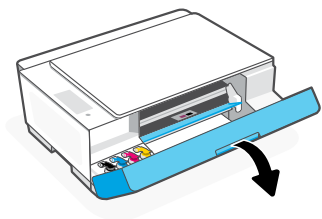


# Configuración manual

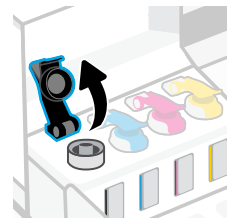
## 1 Llenar los depósitos de tinta.



1. Abra la puerta delantera.



2. Abra el tapón del depósito de tinta que desee llenar.

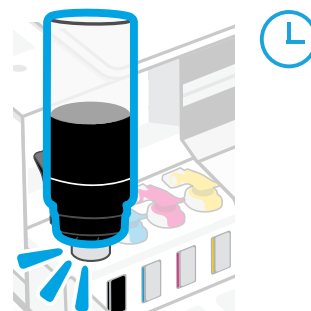


3. Abra la botella de tinta girando el tapón.



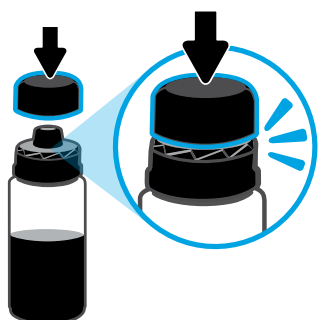
4. Coloque la botella boca abajo en el depósito hasta que encaje en su posición con un clic. Espere a que el depósito se llene de tinta.

**Nota:** quedará tinta en la botella negra.

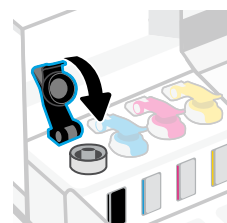


5. Cierre la botella de tinta apretando firmemente el tapón sobre esta.

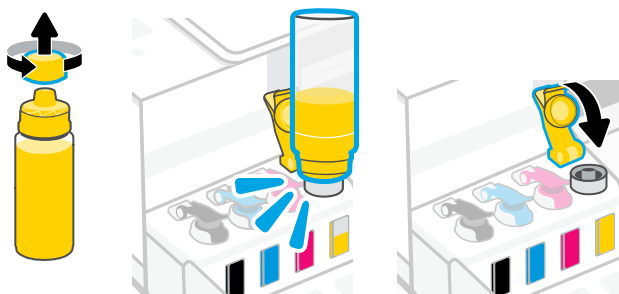
**Nota:** si queda tinta en la botella, ciérrela correctamente y guárdela en posición vertical en un lugar fresco y oscuro.




6. Cierre firmemente el tapón del depósito.

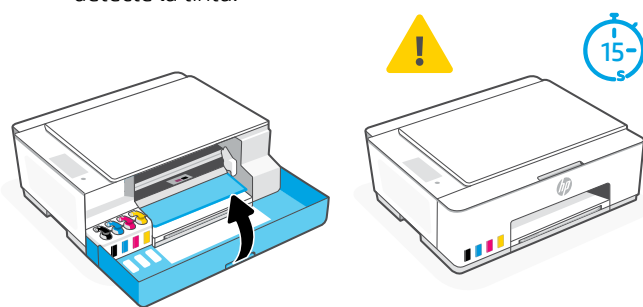


7. Repita estos pasos para llenar todos los depósitos.



8. Cierre la puerta delantera.

 Espere unos 15 segundos para que la impresora detecte la tinta.



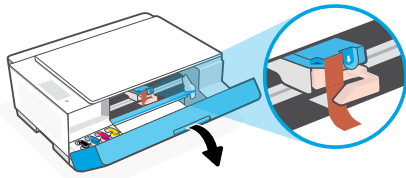
## 2 Instalación de los cabezales de impresión



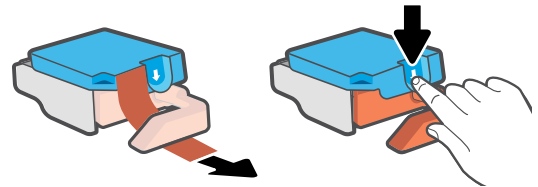
**!** Antes de instalar los cabezales de impresión, compruebe lo siguiente:

- La impresora está encendida.
- Los cuatro depósitos de tinta están llenos.
- Ha cerrado la puerta delantera durante unos 15 segundos tras el procedimiento de llenado la tinta.

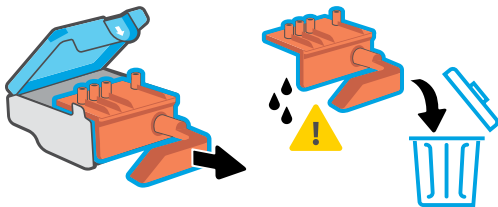
1. Abra la puerta delantera. Asegúrese de que el carro de impresión se ha desplazado al centro; si no es así, cierre la puerta durante 15 segundos.



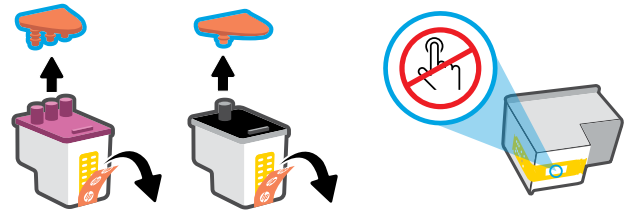
2. Retire la cinta naranja de la tapa del cabezal de impresión. Pulse y suelte la pestaña azul para abrir la tapa del cabezal de impresión.



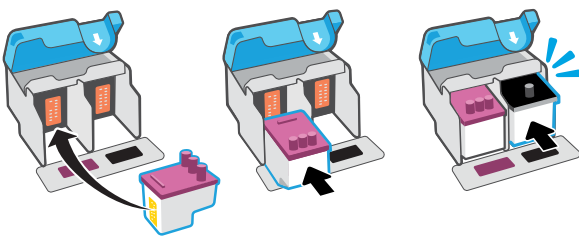
3. Retire y deseche la protección naranja.  
**Nota:** mantenga la protección en posición vertical; manipúlela con cuidado para evitar que se derrame la tinta.



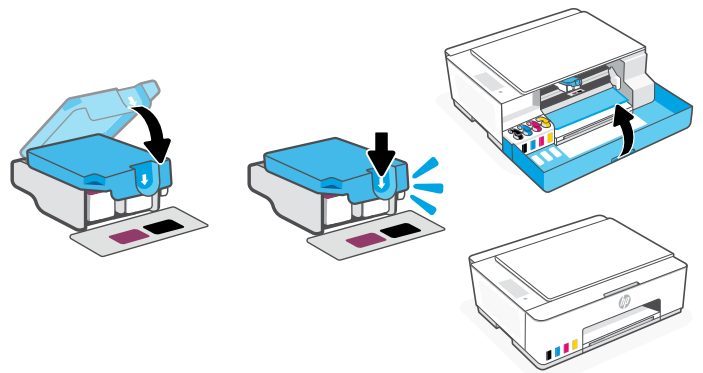
4. Retire la tapa naranja y la cinta de ambos cabezales de impresión.  
**Precaución:** no toque los contactos eléctricos ni las boquillas de impresión que se encuentran bajo la cinta.



5. Inserte el cabezal de impresión hasta que encaje en su posición con un clic. Repita el procedimiento para instalar el otro cabezal de impresión.  
**Nota:** asegúrese de que los contactos eléctricos se encuentran orientados hacia el interior.

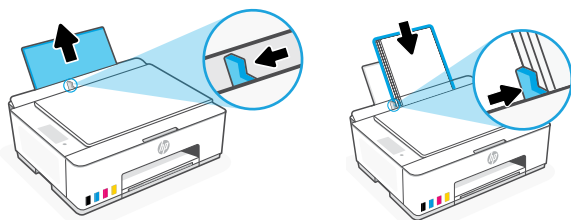


6. Cierre la tapa del cabezal de impresión y la puerta delantera.  
**Nota:** compruebe que la tapa del cabezal de impresión se encuentre correctamente cerrada.

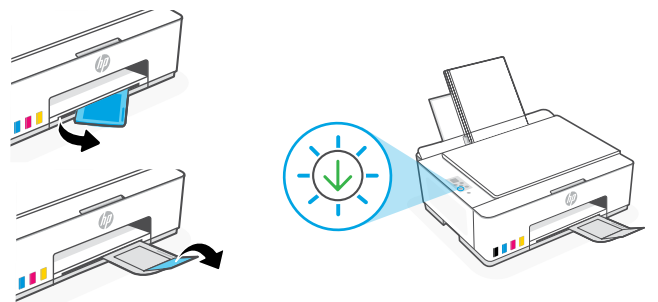


## 3 Cargar papel

1. Levante la bandeja para el papel y deslice la guía hacia fuera. Cargue papel de carta o A4 nuevo no usado y ajuste la guía del papel.

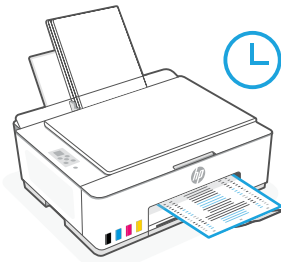


2. Despliegue el extensor de la bandeja de salida. Pulse el botón Reanudar que parpadea .



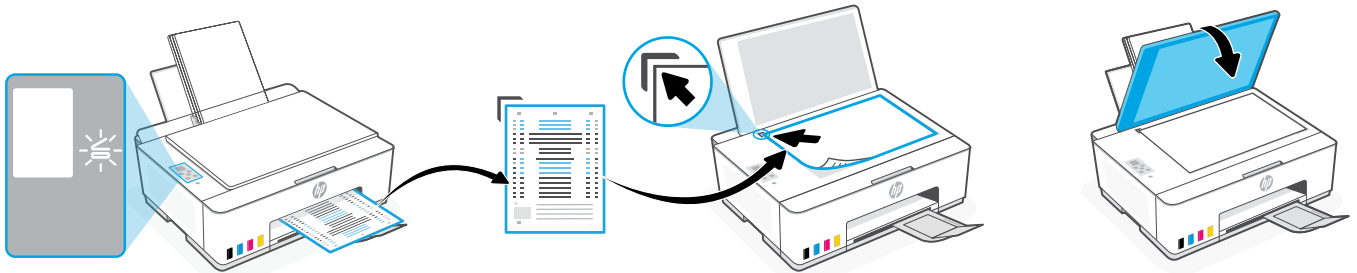
## 4 Escanear la página de alineación de los cabezales de impresión

1. Tras cargar el papel, espere a que se imprima una página de alineación.



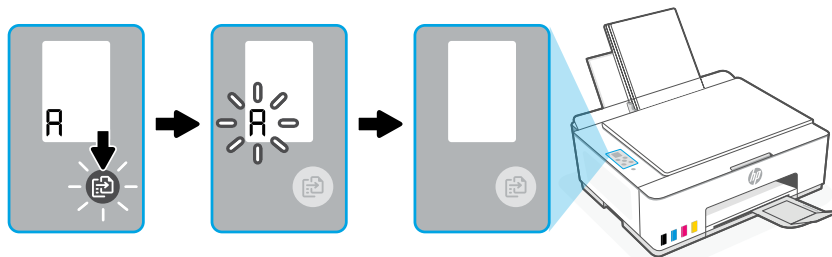
2. Cuando parpadee el indicador luminoso de **Abrir tapa**, abra la tapa del escáner y coloque la página impresa boca abajo sobre el cristal del escáner, alineada con la esquina indicada. Cierre la tapa del escáner.

**Nota:** asegúrese de escanear la página de alineación impresa por la impresora.



3. Pulse el botón de copiar mientras parpadea para escanear la página.

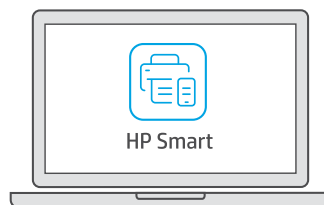
En la pantalla de la impresora, el icono "A" parpadea durante el escaneo y desaparece cuando finaliza la alineación.



La configuración del hardware de la impresora finaliza con la alineación de los cabezales de impresión.

## 5 Instalar el software HP Smart

1. Instale el software HP Smart desde [123.hp.com](https://123.hp.com) en su equipo.



[123.hp.com](https://123.hp.com)

2. Abra **HP Smart**. Si se le solicita, inicie sesión en su cuenta HP o cree una.

3. En la pantalla inicio, seleccione la opción de agregar una impresora y siga las instrucciones que aparecen en la pantalla. Si el software no puede encontrar su impresora, consulte la sección **Ayuda para problemas de conectividad USB durante la configuración (Windows)** de esta guía.



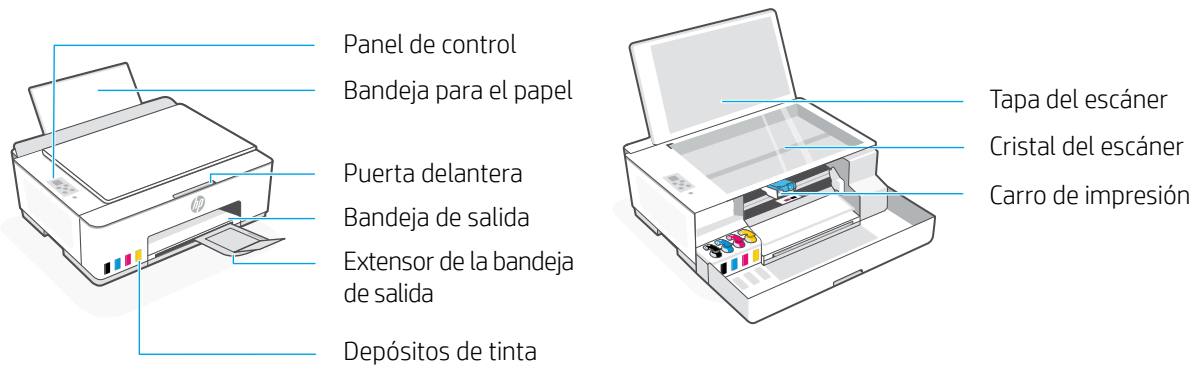
**Obtenga ayuda para la configuración**

Encuentre información sobre la configuración y videos en línea.

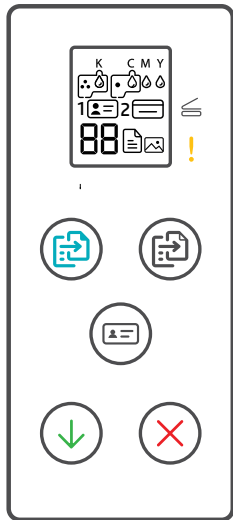
[hp.com/support/printer-setup](https://hp.com/support/printer-setup)



# Referencia de la impresora

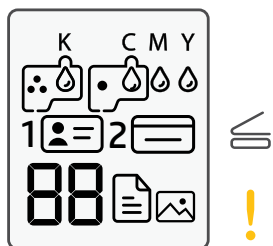


## Botones e indicadores luminosos del panel de control



- Botón de **Encendido**  
Permite encender o apagar la impresora.
- Indicador luminoso de **Abrir tapa**  
Indica que se debe abrir la tapa del escáner para copiar o escanear.
- Luz de **Atención**  
Indica problemas con el papel, la tinta o los cabezales de impresión.
- Botón **Copia en color**  
Permite iniciar la copia en color.
- Botón de **Copia en blanco y negro**  
Permite iniciar la copia en blanco y negro.  
**Nota:** para realizar varias copias, púlselo varias veces o manténgalo pulsado.
- Botón **Copiar ID**  
Coloque una tarjeta en cualquier parte del cristal del escáner para copiar ambas caras en la misma página.
- Botón **Reanudar**  
Permite reanudar un trabajo tras una interrupción.
- Botón **Cancelar**  
Permite cancelar el trabajo actual.

## Pantalla del panel de control



- K C M Y**  
Problemas relacionados con la tinta, incluido un nivel de tinta bajo.
- Modo Copia de fotografía para copiar en papel fotográfico.
- 1**   
Coloque el anverso del documento de identidad sobre el cristal del escáner.
- 2**   
Coloque el reverso del documento de identidad sobre el cristal del escáner.
- E1/E2**  
Problemas relacionados con los soportes, incluido el de papel agotado.
- E3**  
El tamaño o longitud del papel no coincide.
- E4**  
Se ha producido un atasco en el carro de impresión o la tapa del cabezal de impresión no está cerrada.
- E7**  
Sin tinta.
- Problemas relativos a los cabezales de impresión.  
**Nota:** no abra la tapa del cabezal de impresión salvo que se le indique.

Para obtener más información sobre los indicadores luminosos y los errores, visite [hp.com/support](http://hp.com/support)

# Ayuda para problemas de conectividad USB durante la configuración (Windows)

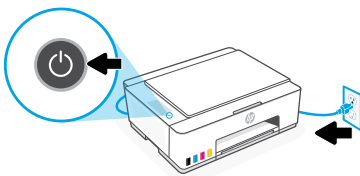
Si el software no detecta su impresora durante la configuración, revise las siguientes condiciones para resolver el problema.

Posible problema	Solución
El software de HP no puede encontrar la impresora	<ol style="list-style-type: none"><li>1. Intente repetir la búsqueda y tenga paciencia. El software solo puede encontrar la impresora si los controladores se han instalado completamente. Esto puede llevar hasta 10 minutos.</li><li>2. Para comprobar el estado de instalación de los controladores:<ol style="list-style-type: none"><li>a. Abra el <b>Panel de control</b> en su equipo Windows.</li><li>b. Seleccione <b>Dispositivos e impresoras</b> y busque la nueva impresora. Aparecerá un icono de «cargando» durante la instalación. Una vez completada la instalación, recibirá una notificación de Windows.</li></ol></li><li>3. Vuelva al software de HP y realice una nueva búsqueda.</li><li>4. Seleccione la impresora cuando aparezca. Siga las instrucciones del software para completar la configuración.</li></ol>
El sistema operativo Windows está obsoleto	<p>Si el software de HP sigue sin poder encontrar la impresora tras haber realizado los pasos mencionados anteriormente:</p> <ol style="list-style-type: none"><li>1. Compruebe que el sistema operativo de su ordenador se encuentra actualizado. Si existe alguna actualización disponible, instale la versión más reciente.<ul style="list-style-type: none"><li>• Si sus preferencias de actualización se encuentran desactivadas, actívelas.</li><li>• En caso de que la versión del sistema operativo sea antigua, la instalación de controladores puede llevar más tiempo.</li><li>• Puede que sea necesario que reinicie su ordenador tras la actualización.</li></ul></li><li>2. Tras realizar la actualización, abra el software de HP y seleccione <b>Agregar impresora</b> para volver a buscar.</li><li>3. Seleccione la impresora cuando aparezca. Siga las instrucciones del software para completar la configuración.</li></ol>

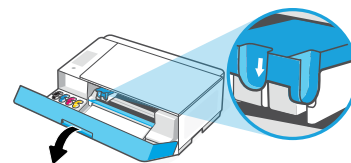
## Trasladar la impresora correctamente para evitar que se derrame la tinta

 [hp.com/support/movingsmarttank](https://hp.com/support/movingsmarttank)

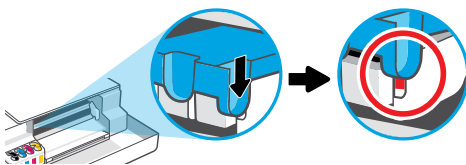
1. Apague la impresora y desconecte el cable de alimentación.



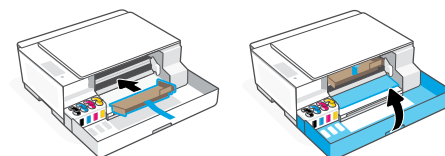
2. Abra la puerta delantera. Asegúrese de que el carro de impresión se encuentre totalmente a la izquierda; si no es así, desplácelo manualmente a la izquierda.



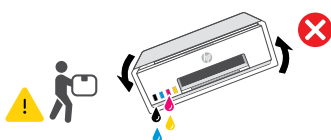
3. Presione hacia abajo en el lateral de la cubierta del cabezal de impresión para liberarla.



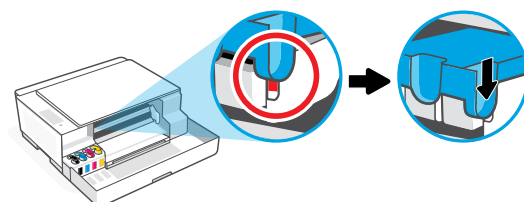
4. Introduzca un inmovilizador de cartón. Cierre la puerta delantera.



5. Empaquete la impresora en una caja (si dispone de una). Cuando traslade la impresora, manténgala en posición horizontal para evitar que se derrame la tinta.



6. Una vez desembalada, apriete hacia abajo la pestaña azul para cerrar la tapa del cabezal de impresión. Compruebe que la tapa se encuentra correctamente cerrada.



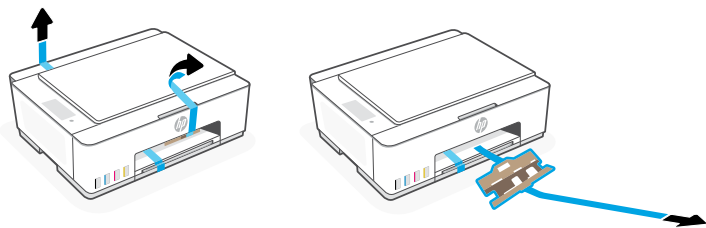
7. Conecte el cable de alimentación y encienda la impresora.

Para solucionar problemas y visualizar vídeos de la impresora, visite [hp.com/support](https://hp.com/support)

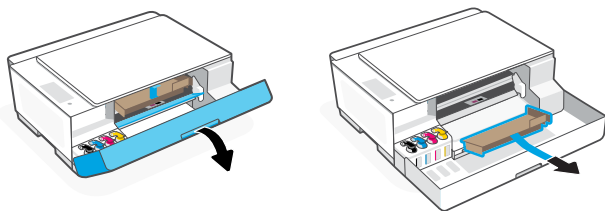
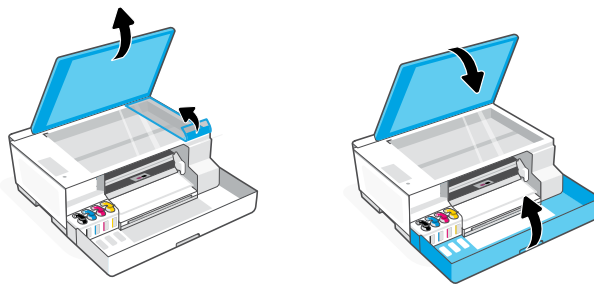
## 1 Remova os materiais de embalagem e ligue a impressora

1. Remova todas as fitas e materiais de embalagem.

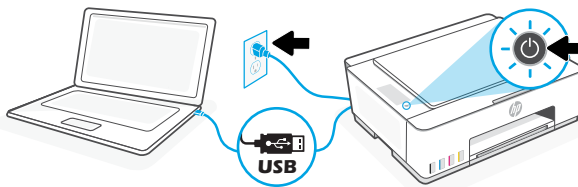
**Observação:** Guarde os materiais de embalagem para o caso de você precisar transportar a impressora.



2. Abra a tampa do scanner e remova o filme. Feche a tampa do scanner e a porta frontal.



3. Conecte a impressora ao seu computador usando um cabo USB. Coloque a impressora na tomada e ligue a impressora. Mantenha a impressora ligada durante a configuração.



## 2 Escolha uma opção para configurar sua impressora

### Recomendado

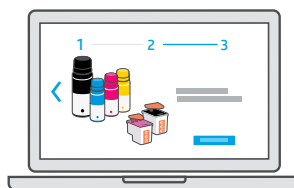
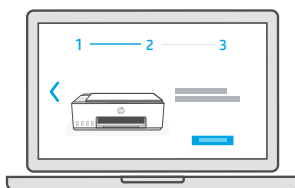
### Opção 1: Configuração guiada com o HP Smart

1. Acesse [123.hp.com](http://123.hp.com) em seu computador para instalar o software HP Smart.



[123.hp.com](http://123.hp.com)

2. Abra o **HP Smart**. Se solicitado, crie ou faça login em uma conta da HP.
3. Na tela inicial, escolha a opção de adicionar uma impressora e siga as instruções na tela. Se o software não conseguir encontrar sua impressora, consulte a seção **Ajuda para problemas de conectividade USB durante a configuração (Windows)** deste guia.
4. Veja as animações para saber como encher os tanques de tinta, instalar cabeças de impressão, colocar papel e executar alinhamento das cabeças de impressão no HP Smart.



### Opção 2: Configuração Manual



Siga as ilustrações neste guia para configurar o hardware e instalar o software HP Smart. Com o HP Smart, você pode imprimir, digitalizar e acessar todos os recursos da impressora.

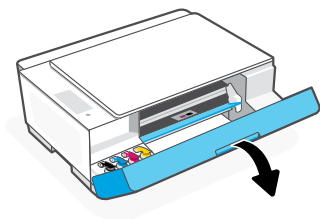


# Configuração Manual

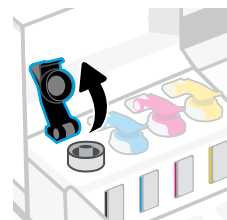
## 1 Abastecer os tanques de tinta



1. Abra a porta frontal.



2. Abra a tampa do tanque de tinta a ser abastecido.

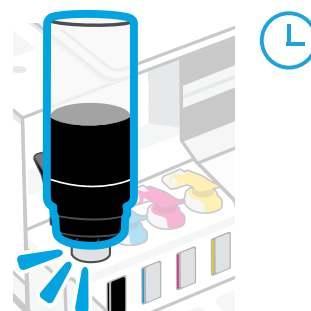


3. Gire a tampa do frasco de tinta, para abri-lo.



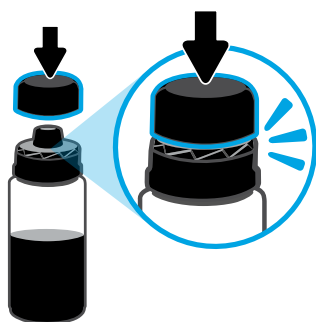
4. Coloque o frasco de cabeça para baixo no tanque e encaixe o frasco no lugar. Aguarde a tinta encher o tanque.

**Observação:** Vai sobrar tinta no frasco de tinta preta.

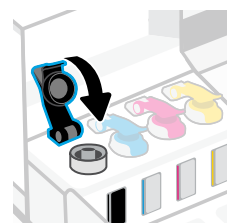


5. Feche o frasco de tinta empurrando a tampa com força no frasco.

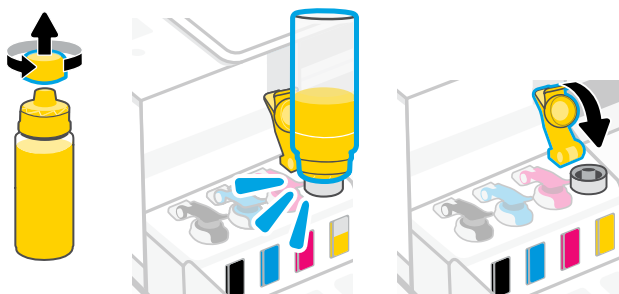
**Observação:** Se sobrar tinta no frasco, feche-o corretamente e armazene-o em um lugar fresco e escuro.




6. Feche bem a tampa do tanque.

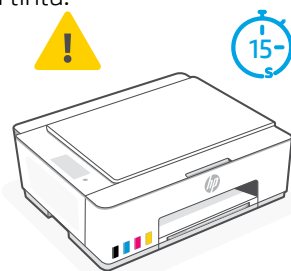
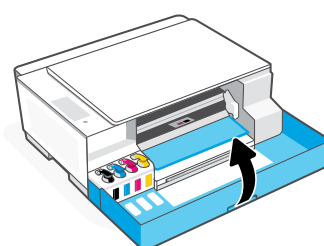


7. Repita o processo para encher todos os tanques.



8. Feche a porta frontal.

 Aguarde cerca de 15 segundos para a impressora detectar a tinta.





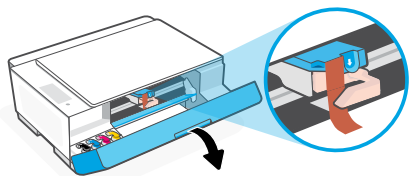
## 2 Instalar as cabeças de impressão



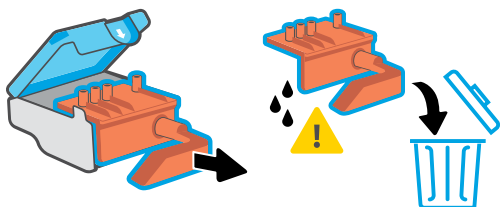
Antes de instalar as cabeças de impressão, assegure-se do seguinte:

- A impressora está ligada.
- Todos os quatro tanques de tinta estão cheios.
- Você deixou a porta frontal fechada por aproximadamente 15 segundos depois de carregar a tinta.

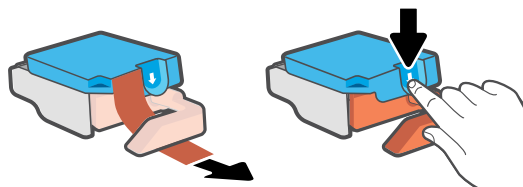
1. Abra a porta frontal. Verifique se o carro de impressão se move para o centro; senão, feche a porta por 15 segundos.



3. Remova e descarte a proteção laranja.  
**Observação:** Mantenha a proteção virada para cima; manuseie com cuidado para evitar vazamentos de tinta.

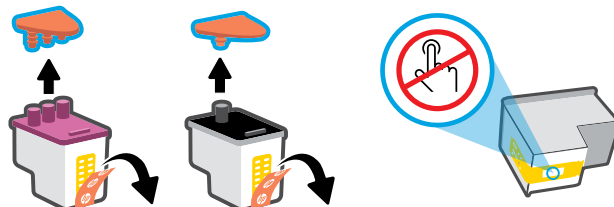


2. Remova a fita laranja da tampa da cabeça de impressão. Pressione e solte a trava azul para abrir a tampa da cabeça de impressão.



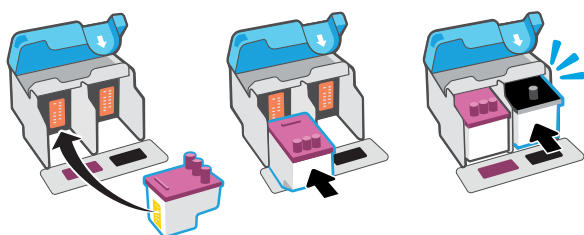
4. Remova a tampa laranja e a fita de ambas as cabeças de impressão.

**Cuidado:** Não toque nos contatos elétricos ou bicos de impressão sob a fita.

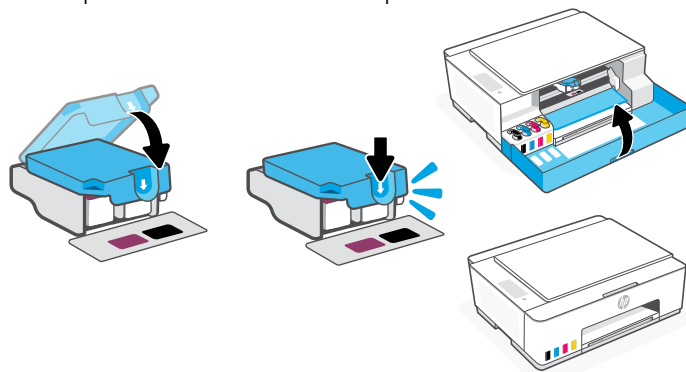


5. Insira a cabeça de impressão e encaixe-a no lugar. Repita o procedimento para instalar a outra cabeça de impressão.

**Observação:** Certifique-se de que os contatos elétricos estejam voltados para dentro.

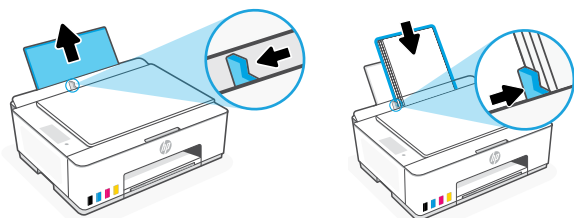



6. Feche a tampa da cabeça de impressão e a porta frontal.  
**Observação:** Verifique se a tampa do cabeçote de impressão está fechada adequadamente.

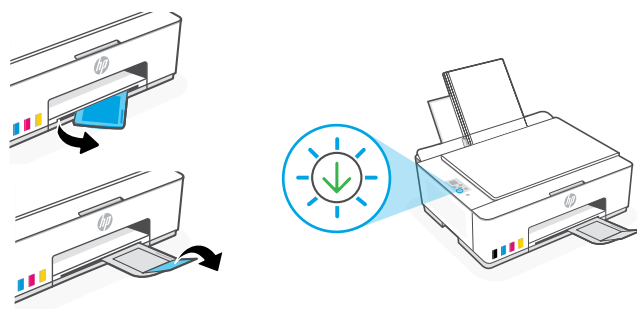


## 3 Colocar papel

1. Levante a bandeja de papel e deslize a guia de papel para fora. Coloque papel Carta ou A4 novo e não utilizado e ajuste a guia de papel.

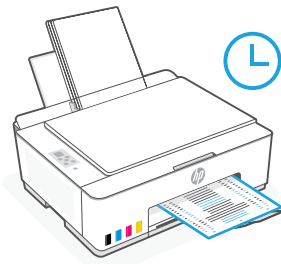


2. Abra a extensor da bandeja de saída. Pressione o botão Continuar piscante .



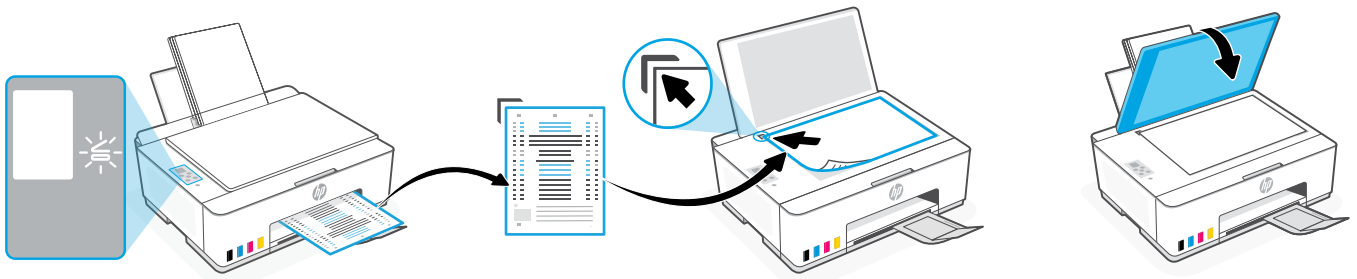
## 4 Digitalizar a página de alinhamento da cabeça de impressão

1. Após colocar papel, espere a página de alinhamento ser impressa.



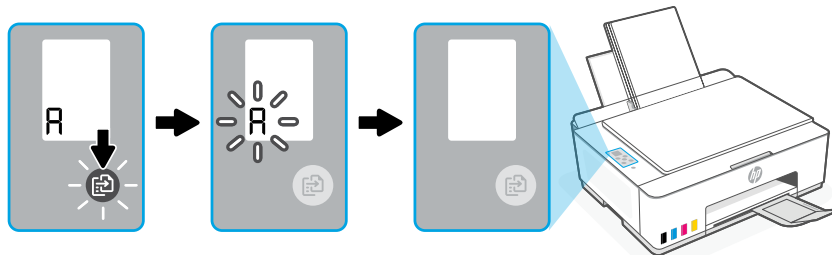
2. Quando a luz de **Tampa aberta** começar a piscar, abra a tampa do scanner e coloque a página com o lado impresso para baixo, no vidro do scanner, alinhada ao canto indicado. Feche a tampa do scanner.

**Observação:** Certifique-se de digitalizar a página de alinhamento produzida pela impressora.



3. Pressione o botão Copiar piscante, para digitalizar a página.

No visor da impressora, o ícone "A" pisca durante a digitalização e desaparece quando o alinhamento está pronto.



A configuração do hardware estará concluída quando o alinhamento da cabeça de impressão terminar.

## 5 Instalar o aplicativo HP Smart

1. Instale o software HP Smart de [123.hp.com](https://123.hp.com) no seu computador.



[123.hp.com](https://123.hp.com)

2. Abra o **HP Smart**. Se solicitado, crie ou faça login em uma conta da HP.
3. Na tela inicial, escolha a opção de adicionar uma impressora e siga as instruções na tela. Se o software não conseguir encontrar sua impressora, consulte a seção **Ajuda para problemas de conectividade USB durante a configuração (Windows)** deste guia.



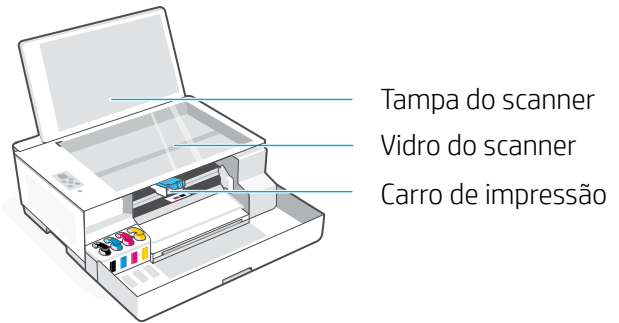
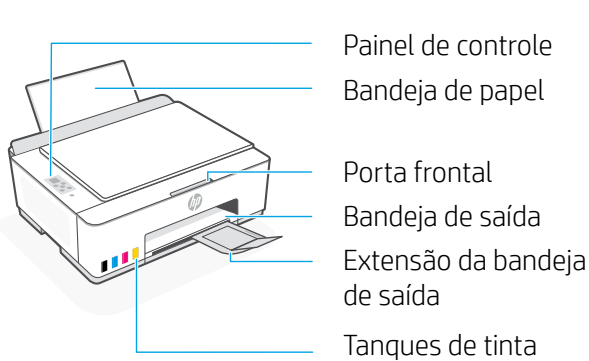
Obtenha ajuda para configuração

Encontre informações de configuração e vídeos online.

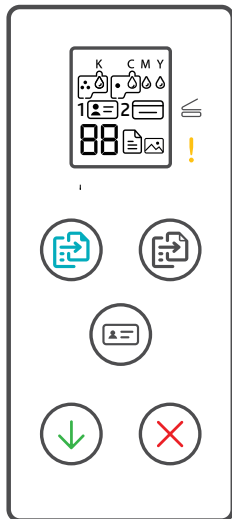
[hp.com/support/printer-setup](https://hp.com/support/printer-setup)











# Referência da impressora

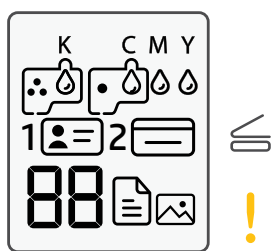




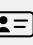





## Botões e luzes do painel de controle



-  **Botão Liga/Desliga**  
Liga ou desliga a impressora.
-  **Luz Tampa aberta**  
Abra a tampa do scanner para copiar ou digitalizar.
-  **Luz Atenção**  
Indica um problema com o papel, tinta ou cabeças de impressão.
-  **Botão Cópia em cores**  
Inicia a cópia em cores.
-  **Botão Cópia em preto** Inicia a cópia em preto e branco.  
**Observação:** Para várias cópias, pressione várias vezes ou mantenha pressionado.
-  **Botão Copiar ID**  
Coloque a identidade em qualquer local do vidro do scanner para copiar os dois lados na mesma página.
-  **Botão Continuar**  
Retoma o trabalho após uma interrupção
-  **Botão Cancelar**  
Cancela o trabalho atual.

## Visor do painel de controle



-  **K C M Y**  
Problemas relacionados à tinta, incluindo pouca tinta.
-  Modo Cópia de foto para copiar em papel fotográfico.
- 1**  Coloque a frente da identidade no vidro do scanner.
- 2**  Coloque o verso da identidade no vidro do scanner.
-   Problemas relacionados à mídia, incluindo falta de papel.  
**E1/E2** Erro de tamanho/comprimento do papel.  
**E3** Congestionamento do carro de impressão ou tampa do cabeçote de impressão não fechada.  
**E4** Congestionamento de papel.  
**E7** Sem tinta.
-   Problemas relacionados às cabeças de impressão.  
**Observação:** Não abra a tampa da cabeça de impressão, a menos que seja instruído a isso.

# Ajuda para problemas de conectividade USB durante a configuração (Windows)

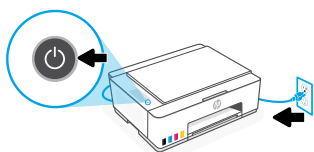
Se o software não encontra a impressora durante a configuração, verifique as seguintes condições para resolver o problema.

Possível problema	Solução
O software HP não consegue localizar a impressora	<ol style="list-style-type: none"><li>1. Tente procurar novamente e aguarde pacientemente. O software conseguirá localizar a impressora somente após os drivers terem sido completamente instalados. Isso pode levar até 10 minutos.</li><li>2. Para verificar o status da instalação do driver:<ol style="list-style-type: none"><li>a. Abra o <b>Painel de Controle</b> no seu computador com Windows.</li><li>b. Selecione <b>Dispositivos e Impressoras</b> para localizar sua nova impressora. Um ícone de carregamento será exibido durante a instalação. Quando a instalação estiver completa, você receberá uma notificação do Windows.</li></ol></li><li>3. Volte ao software HP e procure novamente.</li><li>4. Selecione a impressora quando ela aparecer. Siga as instruções no software para concluir a configuração.</li></ol>
O sistema operacional Windows está desatualizado	<p>Se o software HP ainda não conseguir localizar a impressora após você seguir as instruções acima:</p> <ol style="list-style-type: none"><li>1. Verifique se o sistema operacional do computador está atualizado. Se houver uma atualização disponível, instale a versão mais recente.<ul style="list-style-type: none"><li>• Se a preferência de atualização estiver desativada, ative as atualizações do computador.</li><li>• Uma versão mais antiga do sistema operacional pode demorar mais para instalar os drivers.</li><li>• Poderá ser necessário reinicializar o computador após a atualização.</li></ul></li><li>2. Após a atualização, abra o software HP e selecione <b>Adicionar impressora</b> para procurar novamente.</li><li>3. Selecione a impressora quando ela aparecer. Siga as instruções no software para concluir a configuração.</li></ol>

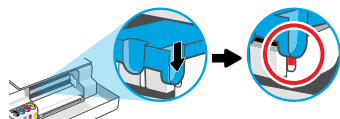
## Mova a impressora da forma correta para evitar vazamentos de tinta

 [hp.com/support/movingsmarttank](https://hp.com/support/movingsmarttank)

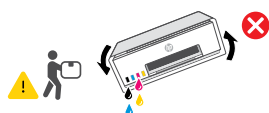
1. Desligue a impressora e remova o cabo de alimentação.



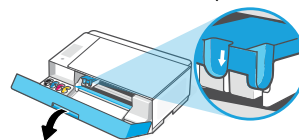
3. Pressione para baixo a lateral da tampa da cabeça de impressão para liberar a tampa.



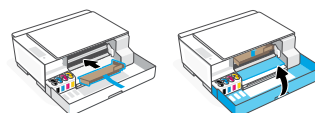
5. Embale a impressora em uma caixa (se disponível). Enquanto estiver movendo a impressora, mantenha-a na horizontal, para evitar vazamentos de tinta.



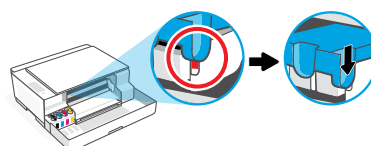
2. Abra a porta frontal. Certifique-se de que o carro de impressão tenha ido totalmente para a esquerda; senão, mova-o manualmente para a esquerda.



4. Insira um restritor de papelão. Feche a porta frontal.



6. Após desembalar, aperte a trava azul para fechar a tampa da cabeça de impressão. Verifique se a tampa está fechada adequadamente.



Para ver a solução de problemas e vídeos da impressora, acesse [hp.com/support](https://hp.com/support)









---

© Copyright 2023 HP Development Company, L.P.

Microsoft is a registered trademark of Microsoft Corporation in the United States and/or other countries.  
All third party trademarks are the property of their respective owners.

Printed in China  
Impreso en China  
Impresso na China

EN ES PT



1F3W2-90032