



HP LaserJet Pro

MFP 3102fdw

Get help with setup

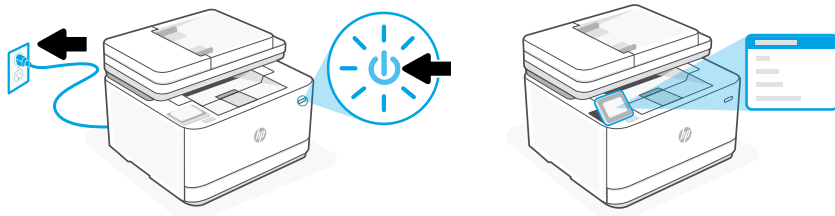
Find setup information and videos online.



hp.com/support/ljmf3101-3108

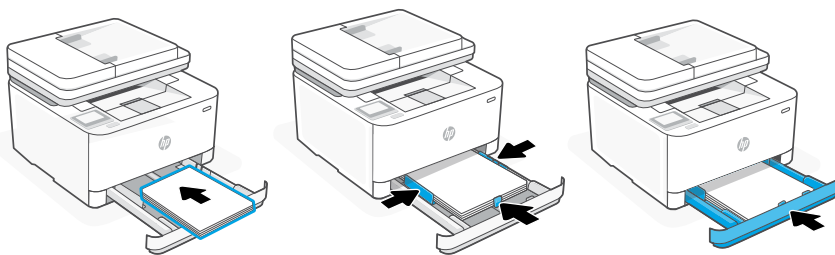
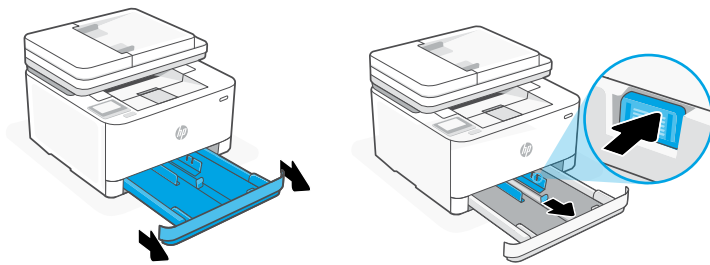


1 Power on



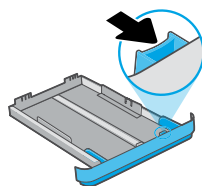
Plug in and power on. On the control panel, choose your language and country/region.

2 Load paper



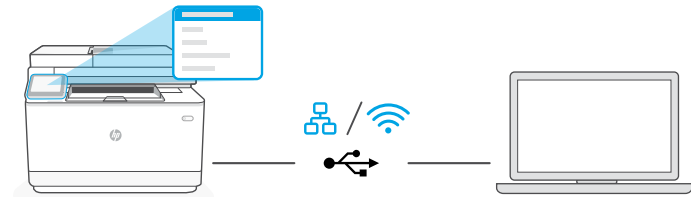
Load paper and adjust the guides.

Note: If loading paper larger than A4, pinch the button in the front of the tray and pull forward. The tray will extend forward by approximately 2.36 inches (60 mm).



3 Connect printer

On the control panel, choose your connection method. If the printer will support multiple users, select Ethernet or Wi-Fi.



Ethernet

1. Connect an Ethernet cable from the printer to the same network as the computer.
2. Press "OK" on the control panel to confirm the IP address. Then continue with the steps on the control panel until you reach the home screen.

Wi-Fi

1. Make sure the computer Wi-Fi is turned on and in range of the printer during setup.
2. On the control panel, enter Wi-Fi information when prompted. Choose the same network as the computer.
3. Continue with the steps on the control panel until you reach the home screen.

USB

1. Connect the USB cable to the port on the back of the printer and to the computer.
2. Continue with the steps on the control panel until you reach the home screen.

4 Install printer software

1. Go to hpsmart.com/download to download the HP software and print drivers.
2. Install software and complete setup.