



Setup Guide



HP LaserJet Pro MFP 3104fdn

Setup overview

Prepare printer

Choose setup option

Option 1: Basic setup

Use for basic printing without Internet

- USB
- Ethernet for network capability

OR

Option 2: Full-feature setup

Get advanced cloud management features with HP Smart Admin.

Get help with setup

Find setup information and videos online.



hp.com/support/ljmf3101-3108



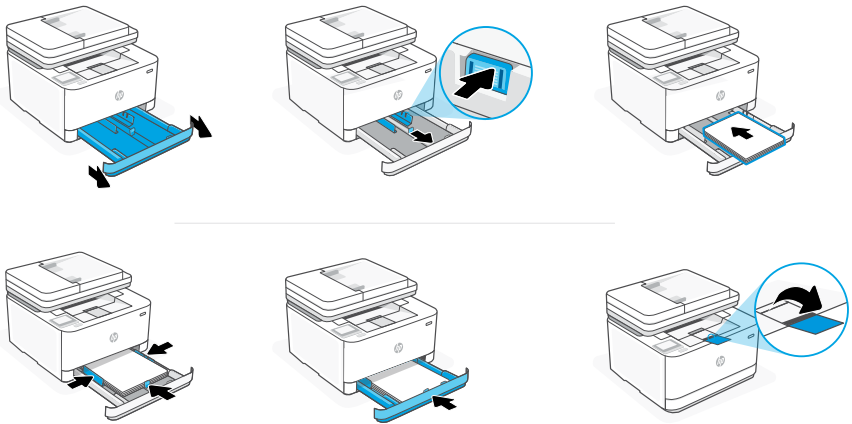
Prepare printer

1



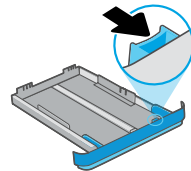
Plug in and power on. On the control panel, choose your language and country/region.

2



Load paper and adjust the guides.

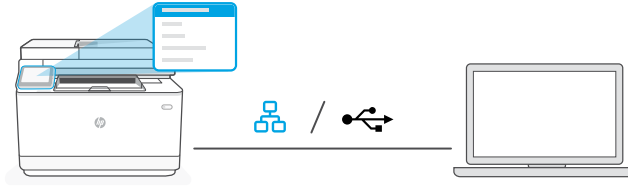
Note: If loading paper larger than A4, pinch the button in the front of the tray and pull forward. The tray will extend forward by approximately 2.36 inches (60 mm).



Choose setup option

OPTION 1: Basic setup

Choose Basic setup for printing on a local network or USB connection.



1. On the control panel, choose your connection method:

Ethernet

- i. Connect an Ethernet cable from the printer to the same network as the computer.
- ii. Press “OK” on the control panel to confirm the IP address. Then continue with the steps on the control panel until you reach the home screen.

USB

- i. Connect the USB cable to the port on the back of the printer and to the computer.
- ii. Continue with the steps on the control panel until you reach the home screen.


2. Install printer software.

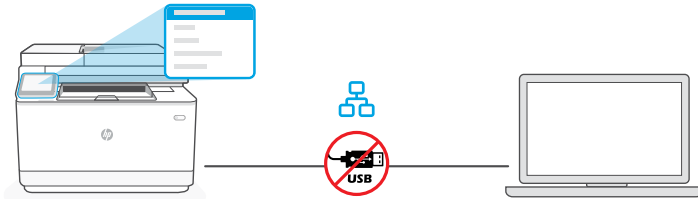
- i. Go to hpsmart.com/download to download the HP software and print drivers.
- ii. Install the software and complete setup.

 **Setup Complete for Option 1**

OPTION 2: Full-feature setup

Provides cloud-based tools to manage the printer in a multi-user, multi-printer environment.

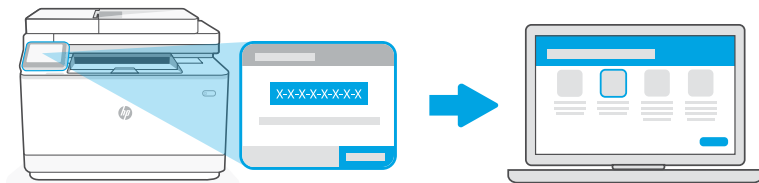
 Do not use USB cable. The printer must be on a network with access to the Internet.



1 Connect printer to network

1. On the control panel, choose “Ethernet.”
2. Connect an Ethernet cable from the printer to the same network as the computer. Continue with the steps on the control panel until you reach the home screen.
3. Go to hpsmart.com/setup on a computer to install HP Easy Start software.
4. Choose the option for full-feature setup and to generate a pairing code. The pairing code displays on the control panel.

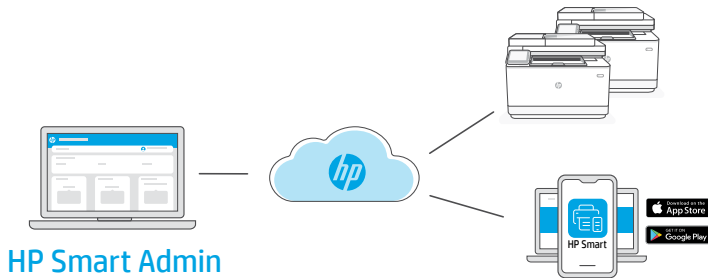
2 Pair printer to HP Smart Admin



hpsmart.com/connect

1. Record the pairing code that displays on the control panel. The pairing code will expire after a limited time. If code expires, generate a new code in HP Easy Start.
2. Continue setup by going to hpsmart.com/connect in a web browser. After creating or signing in to an HP account, you will:
 - Choose to set up the printer for a company/organization or for personal use.
 - Enter the pairing code to link the printer to your HP account.
 - Sign up for Instant Ink for hassle-free, toner delivery service (optional).
 - Install print drivers and print a test page.

3 Manage printer with HP Smart Admin



After completing initial setup, manage the printer from a cloud-connected dashboard.



The dashboard URL differs based on how the printer was configured during setup:

Personal use: hpsmart.com

- Monitor printer status and supplies
- Share printer with friends and family
- Enable mobile printing (requires HP Smart)
- View warranty status

Company/organization use: hpsmart.com/admin

- Manage the printer, toner, users, and more
- Enable mobile printing (requires HP Smart)
- Keep your printing private with Private Pickup



© Copyright 2023 HP Development Company, L.P.

The Apple logo is a trademark of Apple Inc., registered in the U.S. and other countries.

App Store is a service mark of Apple Inc.

Android, Google Play, and the Google Play logo are trademarks of Google Inc.

Printed in xxxxx



3G635-90010