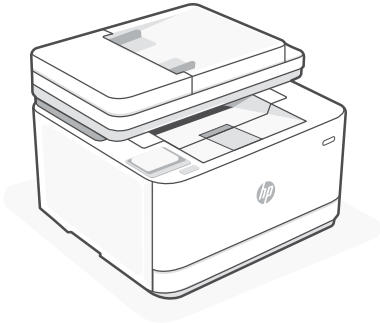




Setup Guide

设置指南



HP LaserJet Pro

MFP 3104fdn

1

Setup overview

EN

Prepare printer

Choose setup option

Option 1: Basic setup

Use for basic printing without Internet

- USB
- Ethernet for network capability

OR

Option 2: Full-feature setup

Get advanced cloud management features with HP Smart Admin.

设置概述

ZHCN

准备打印机

选择设置选项

选项 1：基本设置

在未连接至 Internet 的情况下使用基本的打印功能

- USB
- 通过以太网使用网络功能

或

选项 2：完整功能设置

通过 HP Smart Admin 使用高级云管理功能。

Get help with setup

Find setup information and videos online.



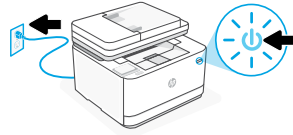
hp.com/support/ljmf3101-3108



1

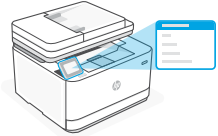
EN

Plug in and power on. On the control panel, choose your language and country/region.

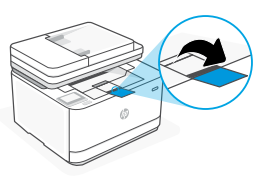
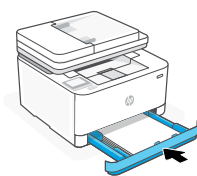
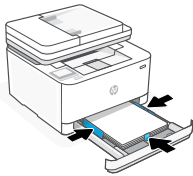
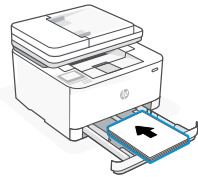
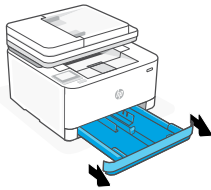


ZHCN

插上电源并开机。在控制面板上，选择您的语言和国家/地区。



2



EN

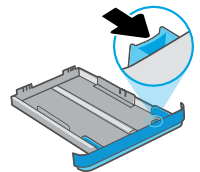
Load paper and adjust the guides.

Note: If loading paper larger than A4, pinch the button in the front of the tray and pull forward. The tray will extend forward by approximately 2.36 inches (60 mm).

ZHCN

装入纸张并调整导轨。

注意：如果装入的纸张尺寸比 A4 大，请捏住纸盒前面的卡销并向前拉。纸盒将向前延伸约 2.36 英寸（60 毫米）。

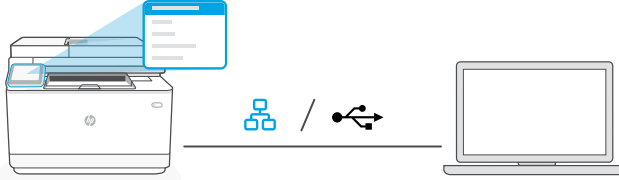


EN OPTION 1: Basic setup

Choose Basic setup for printing on a local network or USB connection.

ZHCN 选项 1：基本设置

选择基本设置，即可在本地网络上打印或使用 USB 连接进行打印。



- EN** 1. On the control panel, choose your connection method:

Ethernet 

- i. Connect an Ethernet cable from the printer to the same network as the computer.
- ii. Press “OK” on the control panel to confirm the IP address. Then continue with the steps on the control panel until you reach the home screen.

USB 

- i. Connect the USB cable to the port on the back of the printer and to the computer.
 - ii. Continue with the steps on the control panel until you reach the home screen.
2. Install printer software.
- i. Go to **hpsmart.com/download** to download the HP software and print drivers.
 - ii. Install the software and complete setup.

- ZHCN** 1. 在控制面板上，选择连接方法：


以太网 

- i. 使用以太网连接线将打印机连接到计算机所在的网络。
- ii. 按控制面板上的“OK”确认 IP 地址。然后继续执行控制面板上的步骤，直到进入主屏幕。

USB 

- i. 将 USB 连接线的两端分别连接到打印机背面的端口和计算机。
 - ii. 继续执行控制面板上的步骤，直到进入主屏幕。
2. 安装打印机软件。
- i. 访问 **hpsmart.com/download** 下载 HP 软件和打印机驱动程序。
 - ii. 安装软件并完成设置。

 Setup Complete for Option 1

 选项 1 设置完成

EN

OPTION 2: Full-feature setup

Provides cloud-based tools to manage the printer in a multi-user, multi-printer environment.

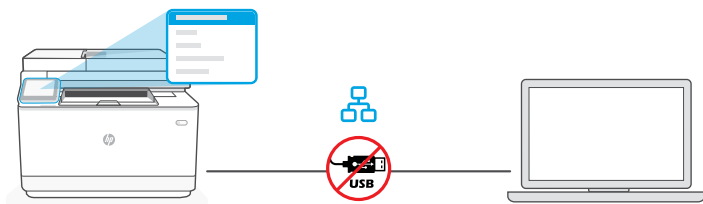
⚠ Do not use USB cable. The printer must be on a network with access to the Internet.

ZHCN

选项 2：完整功能设置

提供基于云的工具，可用于管理多用户、多打印机环境中的打印机。

⚠ 请勿使用 USB 连接线。打印机必须连接至可以访问 Internet 的网络。



1 Connect printer to network

将打印机连接到网络

EN

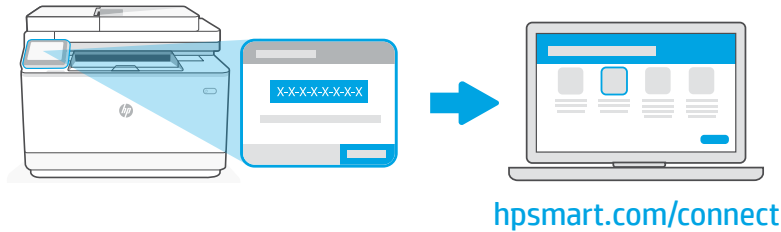
1. On the control panel, choose “Ethernet.”
2. Connect an Ethernet cable from the printer to the same network as the computer. Continue with the steps on the control panel until you reach the home screen.
3. Go to hpsmart.com/setup on a computer to install HP Easy Start software.
4. Choose the option for full-feature setup and to generate a pairing code. The pairing code displays on the control panel.

ZHCN

1. 在控制面板上选择“以太网”。
2. 使用以太网连接线将打印机连接到计算机所在的网络。继续执行控制面板上的步骤，直到进入主屏幕。
3. 在计算机上访问 hpsmart.com/setup 以安装 HP Easy Start 软件。
4. 选择完整功能设置选项，并生成配对代码。随后控制面板上将显示配对代码。

2 Pair printer to HP Smart Admin

将打印机与 HP Smart Admin 配对



EN

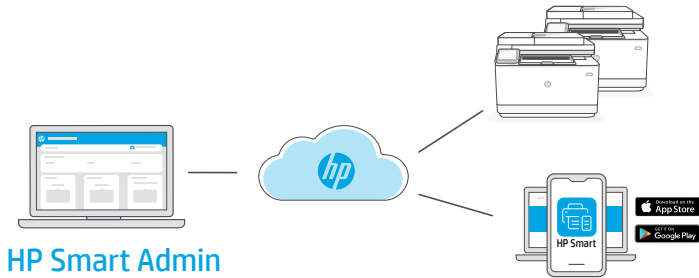
1. Record the pairing code that displays on the control panel. The pairing code will expire after a limited time. If code expires, generate a new code in HP Easy Start.
2. Continue setup by going to **hpsmart.com/connect** in a web browser. After creating or signing in to an HP account, you will:
 - Choose to set up the printer for a company/organization or for personal use.
 - Enter the pairing code to link the printer to your HP account.
 - Sign up for Instant Ink for hassle-free, toner delivery service (optional).
 - Install print drivers and print a test page.

ZHCN

1. 记录控制面板上显示的配对代码。配对代码将在有限时间后过期。如果代码过期，请在 HP Easy Start 中生成新的代码。
2. 在 Web 浏览器中访问 hpsmart.com/connect 以继续进行设置。创建或登录 HP 帐户后，您将能：
 - 选择打印机设置方式：是供公司/组织使用，还是供个人使用。
 - 输入配对代码，将打印机关联到您的 HP 帐户。
 - 注册 Instant Ink 即可享受便捷的碳粉配送服务（可选）。
 - 安装打印驱动程序并打印测试页。

3 Manage printer with HP Smart Admin

利用 HP Smart Admin 管理打印机



EN

After completing initial setup, manage the printer from a cloud-connected dashboard.



The dashboard URL differs based on how the printer was configured during setup:

Personal use: hpsmart.com

- Monitor printer status and supplies
- Share printer with friends and family
- Enable mobile printing (requires HP Smart)
- View warranty status

Company/organization use: hpsmart.com/admin

- Manage the printer, toner, users, and more
- Enable mobile printing (requires HP Smart)
- Keep your printing private with Private Pickup

ZHCN

完成初始设置后，可从云连接仪表板管理打印机。



根据打印机在设置期间的配置方式，仪表板 URL 会有所不同：

个人使用：hpsmart.com

- 监控打印机状态和耗材
- 与朋友和家人共享打印机
- 启用移动打印（需要 HP Smart）
- 查看保修状态

公司/组织使用：hpsmart.com/admin

- 管理打印机、碳粉、用户等
- 启用移动打印（需要 HP Smart）
- 利用私人取件功能确保打印的私密性



© Copyright 2023 HP Development Company, L.P.

The Apple logo is a trademark of Apple Inc., registered in the U.S. and other countries.

App Store is a service mark of Apple Inc.

Android, Google Play, and the Google Play logo are trademarks of Google Inc.

Printed in xxxxx

Printed in xxxxx

EN

ZHCN



3G635-90009