

HP LaserJet Pro 3002dn

Get help with setup

Find setup information and videos online.

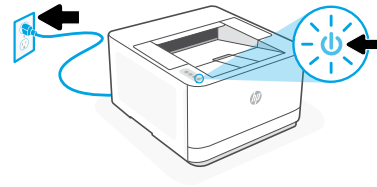


hp.com/support/lj3001-3008

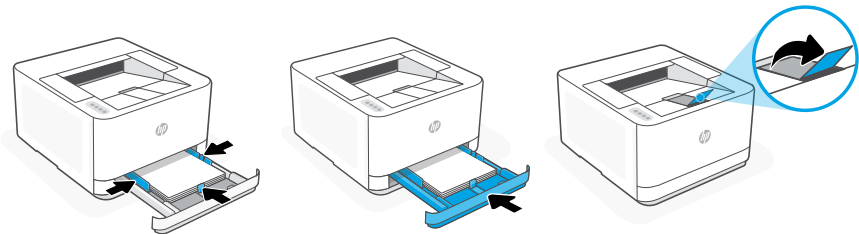
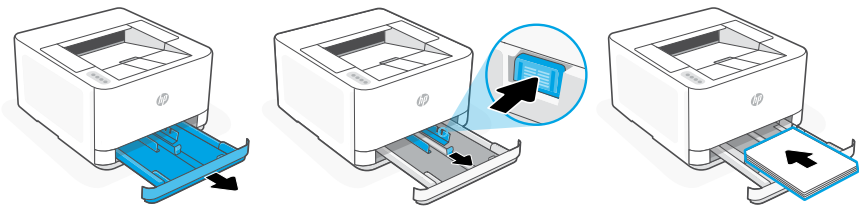


1 Power on

Plug in and power on.

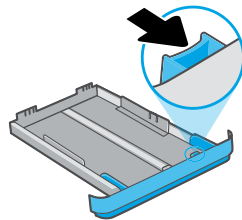


2 Load paper

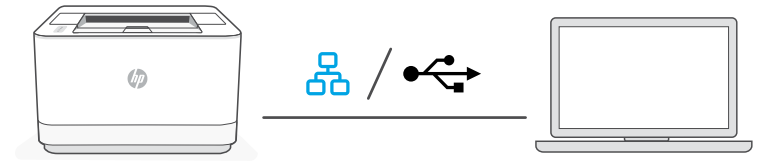


Load paper and adjust the guides.

Note: If loading paper larger than A4, pinch the button in the front of the tray and pull forward. The tray will extend forward by approximately 2.36 inches (60 mm).



3 Connect printer



1. Choose Ethernet or USB:

Ethernet 

Connect an Ethernet cable from the printer to the same network as the computer.

USB 

Connect the USB cable to the port on the back of the printer and to the computer.

2. Install printer software.

- i. Go to [hpsmart.com/download](https://www.hp.com/go/hpsmart) to download the HP software and print drivers.
- ii. Install the software and complete setup.