



Setup Guide

Guide de configuration
Setup-Handbuch

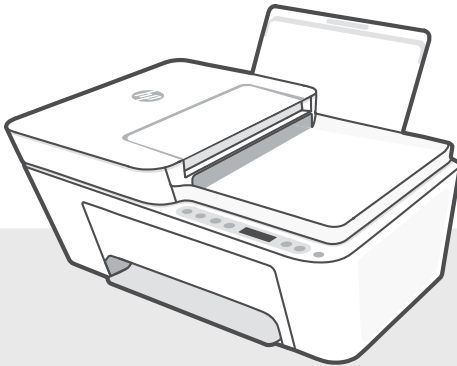
Guida alla configurazione
Guía de instalación
Installationsvejledning

Installatiegids
Seadistusjuhend
Asennusopas

Uzstādīšanas pamācība
Sąrankos vadovas
Oppsettguide

Guia de instalação
Installationsguide
Οδηγός εγκατάστασης

1

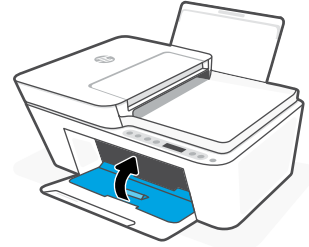
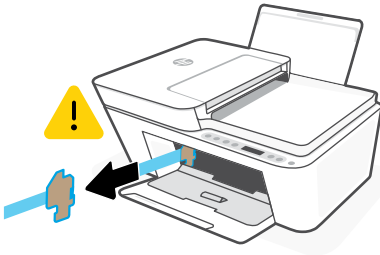
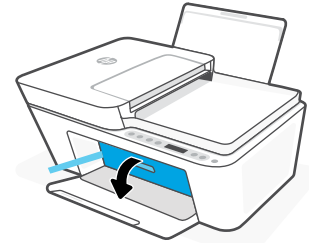
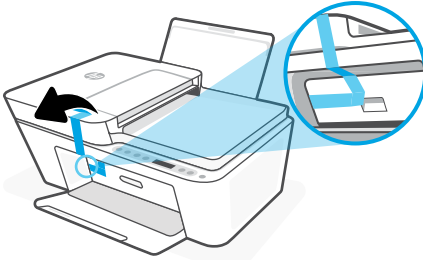
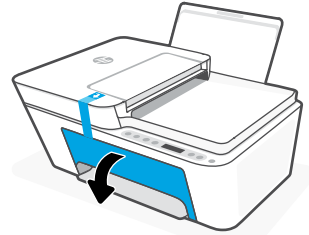
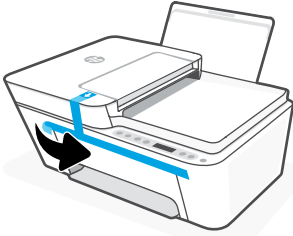


HP DeskJet
4200e All-in-One series



English, Français, Deutsch	2
Italiano, Español, Dansk	6
Nederlands, Eesti, Suomi	10
Latviski, Lietuviškai, Norsk	14
Português, Svenska, Ελληνικά	18

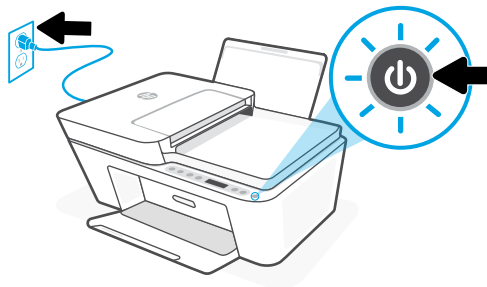
1



EN Remove and discard all packaging, tape, and cardboard. Close the ink access door.

FR Retirez et jetez tous les emballages, rubans adhésifs et cartons. Fermez la porte d'accès à l'encre.

DE Entfernen und entsorgen Sie Verpackung, Klebeband und Karton. Schließen Sie die Tintenzugangsklappe.

2 

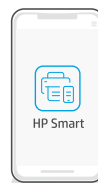
EN Plug in and power on the printer.

FR Branchez et allumez l'imprimante.

DE Schließen Sie den Drucker an und schalten Sie ihn ein.

3 

123.hp.com



EN Install HP Smart software

On a computer or mobile device, go to **123.hp.com** to install the required HP Smart software.

FR Installation du logiciel HP Smart


Sur un ordinateur ou un périphérique mobile, accédez à **123.hp.com** pour installer le logiciel HP Smart requis.

DE Installieren der HP Smart Software


Gehen Sie auf einem Computer oder Mobilgerät zu **123.hp.com**, um die erforderliche HP Smart Software zu installieren.



EN Connect the printer to a Wi-Fi network using HP Smart software. This printer only supports 2.4 GHz networks.

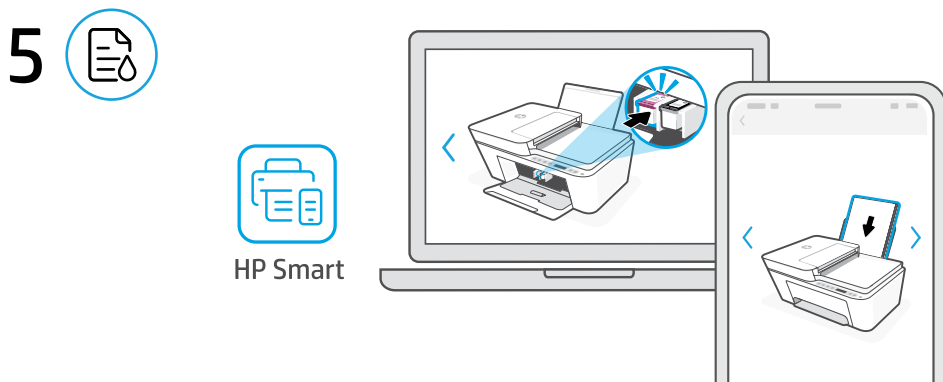
 Do not use USB for initial setup of HP+ printers. See **Reference Guide** for details.

FR Connectez votre imprimante à un réseau Wi-Fi en utilisant le logiciel HP Smart. Cette imprimante est compatible uniquement avec les réseaux 2,4 GHz.

 N'utilisez pas de câble USB pour la configuration initiale des imprimantes HP+. Consultez le **Guide de référence** pour plus de détails.

DE Verbinden Sie den Drucker mit einem Wi-Fi-Netzwerk über die HP Smart Software. Dieser Drucker unterstützt nur 2,4 GHz Netzwerke.

 HP+ Drucker nicht über USB für die Ersteinrichtung verwenden. Weitere Informationen finden Sie im **Referenzhandbuch**.



EN Install ink and paper using guided setup and animations in the HP Smart software.

FR Installez l'encre et le papier en utilisant la configuration guidée et les animations du logiciel HP Smart.

DE Installieren Sie Tinte und Papier mithilfe der geführten Einrichtung und der Animationen in der HP Smart Software.

EN **Get help with setup**

Find setup information and videos online.

FR **Obtenir de l'aide pour la configuration**

Trouvez des informations et des vidéos de configuration en ligne.

DE **Hilfe bei der Einrichtung**

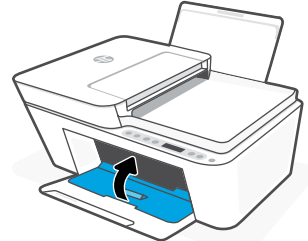
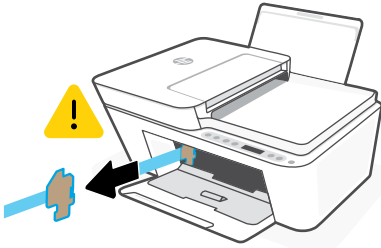
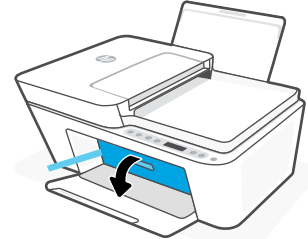
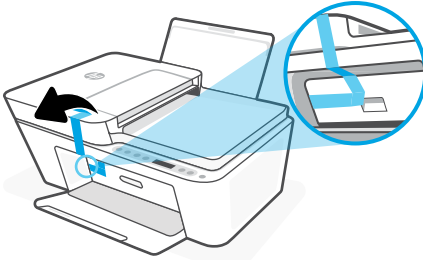
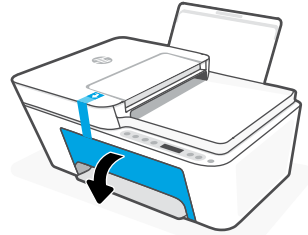
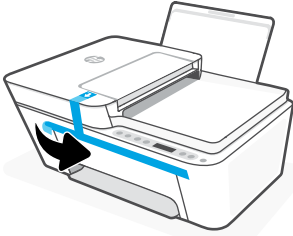
Informationen und Videos zur Einrichtung finden Sie online.



hp.com/support/printer-setup



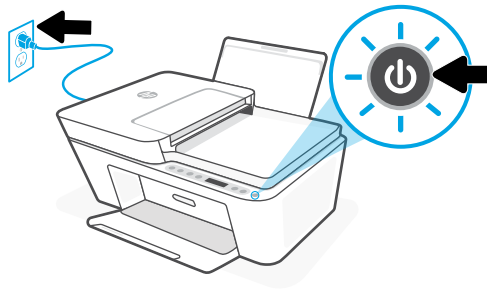
1



IT Rimuovere e gettare tutto il materiale di imballaggio, il nastro adesivo e il cartoncino. Chiudere lo sportello di accesso all'inchiostro.

ES Retire y deseche todo el embalaje, la cinta y el cartón. Cierre la puerta de acceso a la tinta.

DA Fjern og kassér al emballage, tape og pap. Luk blækdækslet.

2 

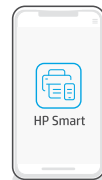
IT Collegare la stampante all'alimentazione e accenderla.

ES Enchufe y encienda la impresora.

DA Sæt stikket i, og tænd for printeren.

3 

123.hp.com



IT Installare il software HP Smart

Su un computer o un dispositivo mobile, visitare **123.hp.com** per installare il software HP Smart necessario.

ES Instalación del software HP Smart


En un ordenador o dispositivo móvil, vaya a **123.hp.com** para instalar el software HP Smart requerido.

DA Installer HP Smart-softwaren


Gå til **123.hp.com** på en computer eller mobilenhed for at installere den påkrævede HP Smart-software.




IT Connettere la stampante a una rete Wi-Fi utilizzando il software HP Smart. Questa stampante supporta solamente reti a 2,4 GHz.

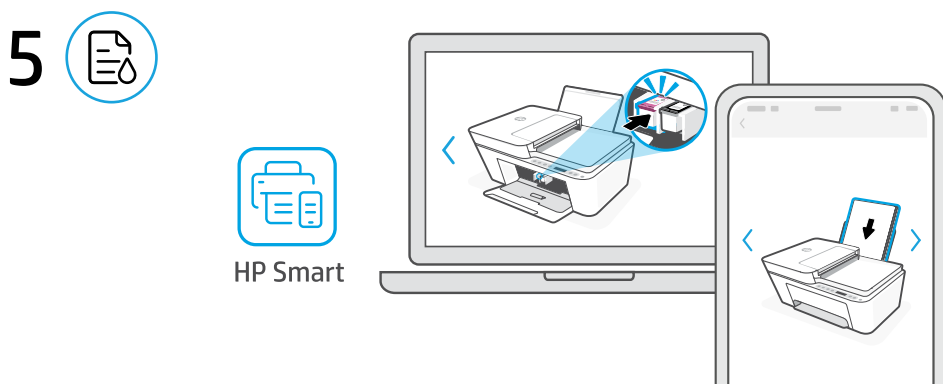
 Non utilizzare USB per la configurazione iniziale delle stampanti HP+. Consultare la **Guida di riferimento** per i dettagli.

ES Conecte la impresora a una red Wi-Fi con el software HP Smart. Esta impresora solo admite redes de 2,4 GHz.

 No utilice el USB para la configuración inicial de las impresoras HP+. Consulte la **Guía de referencia** para obtener más detalles.

DA Slut printeren til et Wi-Fi-netværk ved hjælp af HP Smart-softwaren. Denne printer understøtter kun 2,4 GHz netværk.

 Brug ikke USB til startopsætningen af HP+-printere. Få flere oplysninger i **referencevejledningen**.



IT Inserire l'inchiostro e la carta seguendo la configurazione guidata e le animazioni nel software HP Smart.

ES Instale la tinta y el papel mediante la instalación guiada y las animaciones del software HP Smart.

DA Installer blæk og papir ved hjælp af den guidede opsætning og animationerne i HP Smart-softwaren.

IT Assistenza durante la configurazione

Online sono disponibili informazioni e video pertinenti alla configurazione.

ES Obtenga ayuda para la configuración

Encuentre información sobre la configuración y vídeos en línea.

DA Få hjælp til opsætning

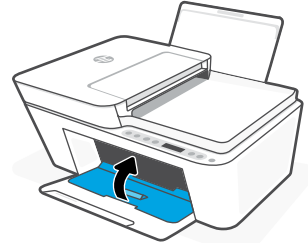
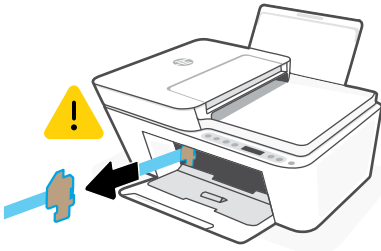
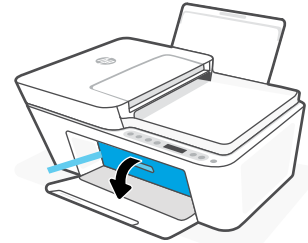
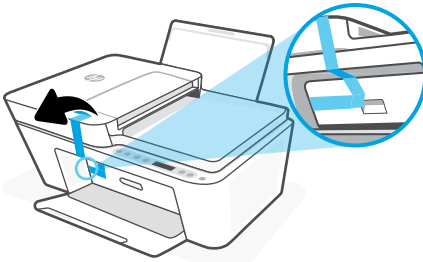
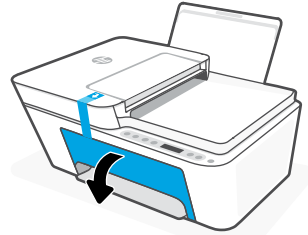
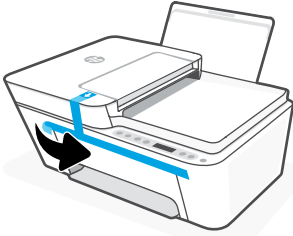
Find installationsoplysninger og videoer online.



hp.com/support/printer-setup



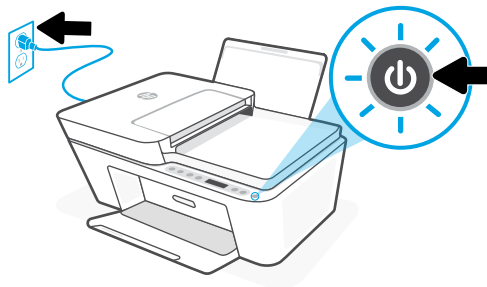
1



NL Verwijder alle verpakking, tape en karton en gooi deze weg. Sluit de toegangsklep voor inkt.

ET Eemaldage ja visake ära kogu pakend, teip ja papp. Sulgege tindi juurdepääsuluuk.

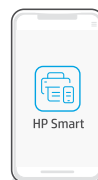
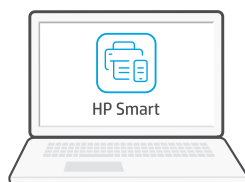
FI Poista ja hävitä pakkaus, teippi ja pahvi. Sulje mustekasetin luukku.

2 

NL Steek de stekker in het stopcontact en zet de printer aan.

ET Ühendage printer pistikusse ja lülitage toide sisse.

FI Kytke tulostin pistorasiaan ja käynnistä se.

3 

123.hp.com

NL HP Smart-software installeren

Ga naar 123.hp.com op een computer of mobiel apparaat om de vereiste HP Smart-software te installeren.

ET Installige tarkvara HP Smart

Minge arvutis või mobiilseadmes vajaliku HP Smart tarkvara installimiseks saidile 123.hp.com.

FI HP Smart -ohjelmiston asennus


Siirry tietokoneella tai mobiililaitteella osoitteeseen 123.hp.com ja asenna vaadittava HP Smart -ohjelmisto.




NL Verbind de printer via de HP Smart-software met een Wi-Fi-netwerk. Deze printer ondersteunt alleen 2,4 Ghz netwerken.

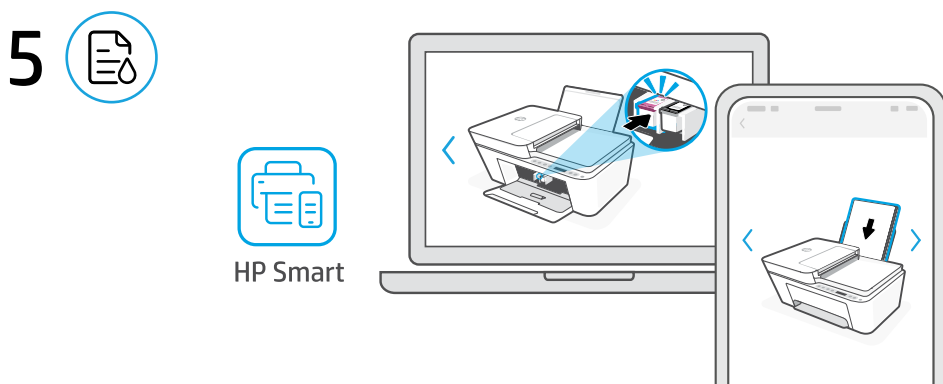
 Gebruik voor de initiële installatie van HP+ printers geen USB. Raadpleeg de **Referentiegid**s voor details.

ET Ühendage printer Wi-Fi-võrguga, kasutades tarkvara HP Smart. See printer toetab ainult 2,4 GHz võrke.

 Ärge kasutage HP+ printerite esmaseks seadistamiseks USB-d. Üksikasju vaadake **teatmejuhendist**.

FI Yhdistä tulostin Wi-Fi-verkkoon HP Smart -ohjelmistolla. Tämä tulostin tukee ainoastaan 2,4 GHz:n verkkoja.

 Älä käytä USB-liitintää HP+-tulostimien ensimmäiseen asennukseen. Katso tiedot **viiteoppaasta**.



NL Installeer inkt en papier met behulp van de stappen en animaties in de HP Smart-software.

ET Paigaldage tint ja paber tarkvara HP Smart juhiste ja animatsioonide abil.

FI Asenna muste ja paperi käyttäen ohjattua asennusta ja HP Smart -ohjelmiston animaatioita.

NL Hulp bij het installeren

Zoek online naar informatie over instellingen en video's.

ET Seadistamisel abi saamine

Seadistusteavet ja videoid leiate veebist.

FI Ohjeita määrittämiseen

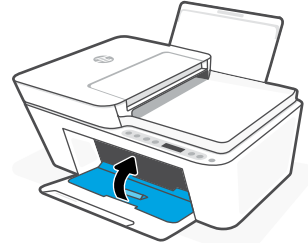
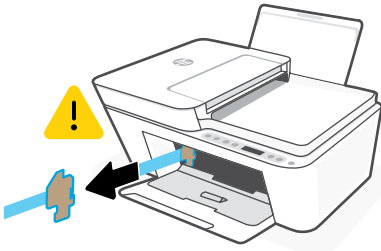
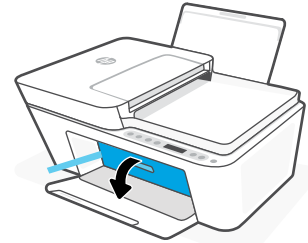
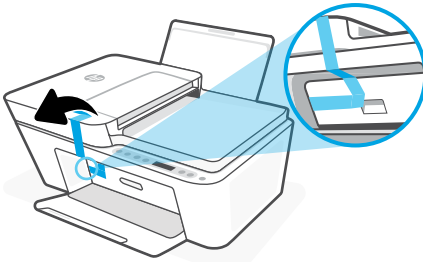
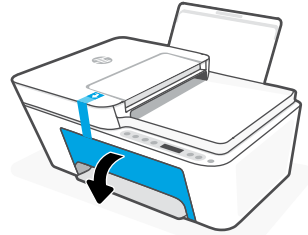
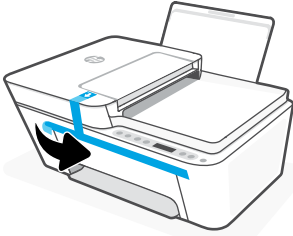
Etsi määrittäsohjeita ja -videoita verkkopalvelusta.



hp.com/support/printer-setup



1



LV Noņemiet un izmetiet visu iepakojumu, lentu un kartonu. Aizveriet tintes nodalījuma vāku.

LT Nuimkite ir išmeskite pakuotę, juostą ir kartoną. Uždarykite rašalo prieigos dureles.

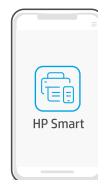
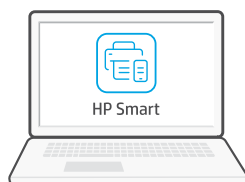
NO Fjern og kast all innpakning, materiell og papp. Lukk blekktilgangsdøren.

2 

LV Pieslēdziet un ieslēdziet printeri.

LT Prijunkite spausdintuvą ir įjunkite maitinimą.

NO Sett i støpselet og slå på skriveren.

3 

123.hp.com

LV Programmatūras HP Smart instalēšana

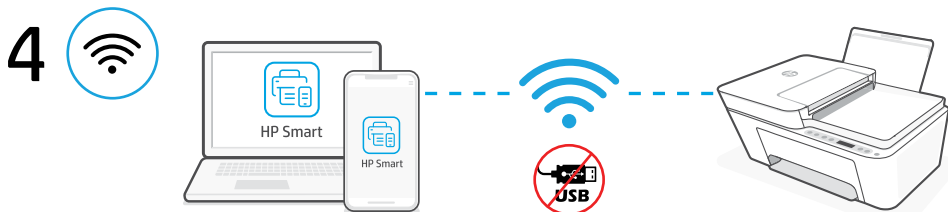
Lai instalētu nepieciešamo programmatūru HP Smart, datorā vai mobilajā ierīcē dodieties uz tīmekļa vietni 123.hp.com.

LT Įdiekite „HP Smart“ programinę įrangą


Kompiuteryje arba mobiliajame įrenginyje eikite į 123.hp.com ir įdiekite reikiamą „HP Smart“ programinę įrangą.

NO Installer HP Smart-programvaren


Gå til 123.hp.com på en datamaskin eller en mobil enhet for å installere den nødvendige HP Smart-programvaren.




LV Printerī izveidojiet savienojumu ar Wi-Fi tīklu, izmantojot programmatūru HP Smart. Šis printeris atbalsta tikai 2,4 GHz tīklus.

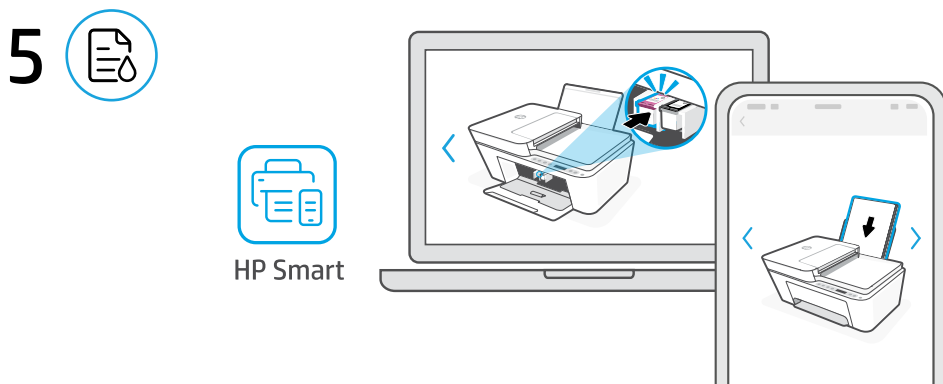
 HP+ printeru sākotnējai iestatīšanai nedrīkst izmantot USB. Detalizētu informāciju skatiet dokumentā **Rokasgrāmata**.

LT Prijunkite spausdintuvą prie „Wi-Fi“ tinklo naudodami „HP Smart“ programinę įrangą. Šis spausdintuvas palaiko tik 2,4 GHz tinklus.

 Pradinei „HP+“ spausdintuvų sąrankai nenaudokite USB. Išsamesnės informacijos rasite **Informaciniame vadove**.

NO Koble skriveren til et Wi-Fi-nettverk ved hjelp av HP Smart-programvaren. Denne skriveren støtter kun Wi-Fi-kobling på 2,4 GHz.

 Ikke bruk USB for første oppsett av HP+ -skrivere. Se **Referanseveiledningen** for mer informasjon.



LV Lai ievietotu tinti un papīru, izmantojiet programmatūrā HP Smart pieejamos iestatīšanas norādījumus un animācijas.

LT Rašalo kasetes ir popierių įdėkite vadovaudamiesi „HP Smart“ programinėje įrangoje esančiais sąrankos veiksmiais ir animacijomis.

NO Installer blekk og papir ved hjelp av veiledningen og animasjonen i HP Smart-programmet.

LV **Palīdzība, veicot iestatīšanu**

Skatiet informāciju un videomateriālus par iestatīšanu tiešsaistē.

LT **Gaukite sąrankos pagalbą**

Raskite sąrankos informaciją bei vaizdo įrašus internete.

NO **Få hjelp med oppsett**

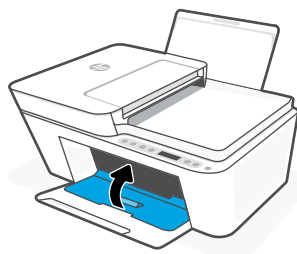
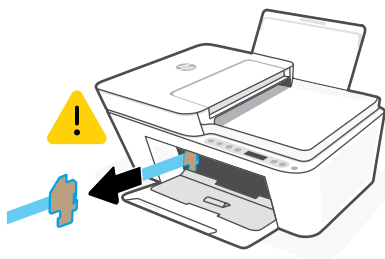
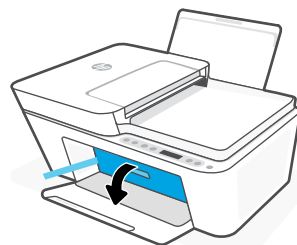
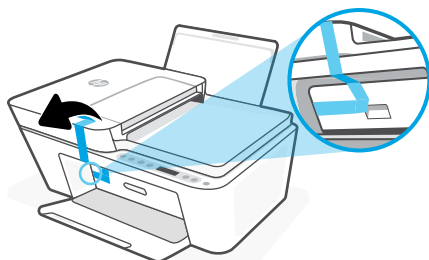
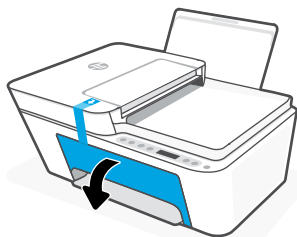
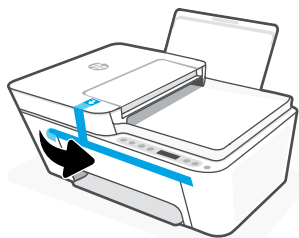
Finn oppsettinformasjon og -videoer på nettet.



hp.com/support/printer-setup



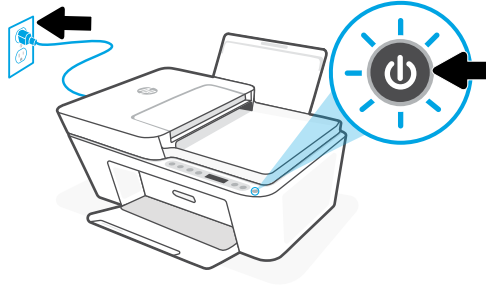
1



PT Remova e descarte todo o material de embalagem, fita e papelão. Feche a porta de acesso à tinta.

SV Avlägsna och kassera tejp, papp och allt annat förpackningsmaterial. Stäng luckan till patronerna.

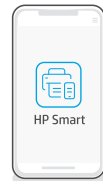
EL Αφαιρέστε και απορρίψτε όλες τις συσκευασίες, την ταινία και το χαρτόνι. Κλείστε τη θύρα πρόσβασης στη μελάνη.

2 

PT Conecte o cabo de alimentação e ligue a impressora.

SV Anslut skrivaren till vägguttaget och starta den.

EL Συνδέστε τον εκτυπωτή στο ρεύμα και ενεργοποιήστε τον.

3 

123.hp.com

PT Instalar o software HP Smart

Em um computador ou dispositivo móvel, acesse 123.hp.com para instalar o software HP Smart necessário.

SV Installera HP Smart-programmet


Använd en dator eller mobil enhet för att gå till 123.hp.com och installera det obligatoriska HP Smart-programmet.

EL Εγκαταστήστε το λογισμικό HP Smart

Σε υπολογιστή ή φορητή συσκευή, μεταβείτε στο 123.hp.com για να εγκαταστήσετε το απαιτούμενο λογισμικό HP Smart.




PT Conecte a sua impressora a uma rede Wi-Fi usando o software HP Smart. Esta impressora suporta apenas redes de 2,4 GHz.

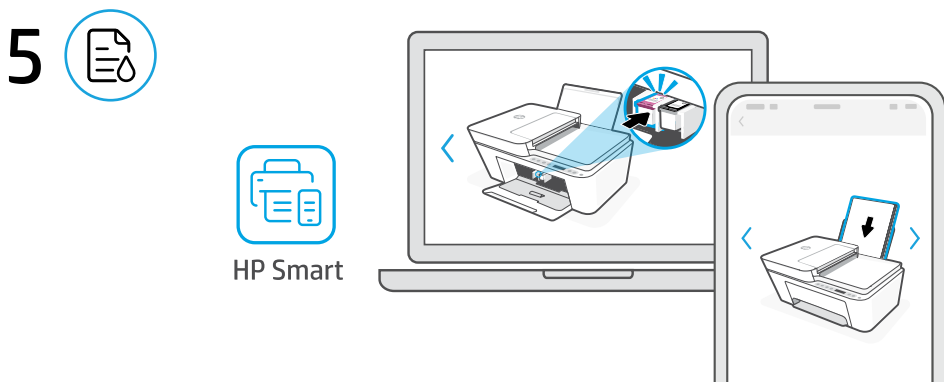
 Não use USB para a configuração inicial das impressoras HP+. Veja detalhes no **Guia de referência**.

SV Anslut skrivaren till ett Wi-Fi-nätverk med HP Smart-programmet. Denna skrivare stöder endast nätverk på 2,4 GHz.

 Använd inte USB för den första installationen av HP+-skrivare. Mer information finns i **referensguiden**.

EL Συνδέστε τον εκτυπωτή σε ένα δίκτυο Wi-Fi μέσω του λογισμικού HP Smart. Αυτός ο εκτυπωτής υποστηρίζει μόνο δίκτυα 2,4 GHz.

 Μην χρησιμοποιείτε USB για την αρχική ρύθμιση των εκτυπωτών HP. Δείτε το **Οδηγός αναφοράς** για λεπτομέρειες.



PT Instale a tinta e o papel usando a configuração guiada e as animações no software HP Smart.

SV Installera bläck och fyll på papper enligt anvisningarna och animeringarna i HP Smart-programmet.

EL Τοποθετήστε μελάνη και χαρτί χρησιμοποιώντας την καθοδηγούμενη ρύθμιση και τις κινούμενες εικόνες στο λογισμικό HP Smart.

PT **Obtenha ajuda para configuração**

Encontre informações de configuração e vídeos online.

SV **Få hjälp med konfigurationen**

Hitta konfigurationsinformation och videor online.

EL **Λήψη βοήθειας σχετικά με τη ρύθμιση**

Βρείτε πληροφορίες ρύθμισης και βίντεο στο διαδίκτυο.



hp.com/support/printer-setup





© Copyright 2024 HP Development Company, L.P.

The Apple logo is a trademark of Apple Inc., registered in the U.S. and other countries.

App Store is a service mark of Apple Inc. Android, Google Play, and the Google Play logo are trademarks of Google Inc.

Printed in China

Imprimé en Chine

Gedruckt in China

Stampato in Cina

Impreso en China

Impresso na China

EN	FR	DE	IT	ES
DA	NL	ET	FI	LV
LT	NO	PT	SV	EL



58850-90005