


learning more

for information on...	see this source...
Programs on your HP iPAQ Pocket PC	The <i>HP iPAQ Pocket PC Reference Guide</i> on Companion CD, and eBook. For Help, tap  then Help .
The <i>HP iPAQ Pocket PC Reference Guide</i>	This information is presented in a printable format and eBook format in select languages on Companion CD
iPAQ Backup	Chapter 2: <i>HP iPAQ Pocket PC Reference Guide</i> on Companion CD
iPAQ File Store	Chapter 2: <i>HP iPAQ Pocket PC Reference Guide</i> on Companion CD
iTask Manager	Chapter 2: <i>HP iPAQ Pocket PC Reference Guide</i> on Companion CD
Wireless LAN	Chapter 3: <i>HP iPAQ Pocket PC Reference Guide</i> on Companion CD
Bluetooth	Chapter 4: <i>HP iPAQ Pocket PC Reference Guide</i> on Companion CD
Fingerprint Reader	Chapter 5: <i>HP iPAQ Pocket PC Reference Guide</i> on Companion CD
Universal Remote Control	Chapter 10: <i>HP iPAQ Pocket PC Reference Guide</i> on Companion CD
Additional programs that can be installed on your HP iPAQ Pocket PC	The <i>HP iPAQ Pocket PC Companion CD</i>
Information about HP iPAQ Pocket PC options	The <i>Accessories Information</i> brochure included with your HP iPAQ Pocket PC or http://www.hp.com/products/pocketpc/options
Information on your HP iPAQ Pocket PC	http://www.hp.com/products/pocketpc
Up-to-date information on your Microsoft Pocket PC 2002 software	http://www.microsoft.com/mobile/pocketpc
Programs that are already on your HP iPAQ Pocket PC	The <i>HP iPAQ Pocket PC Companion CD</i> and Help on your HP iPAQ Pocket PC. Tap Start , then Help .
Technical support phone numbers	On the Companion CD and http://www.compaq.com/support

for information on... see this source...

Connecting your HP iPAQ Pocket PC to a computer	This <i>Getting Started</i> guide, the <i>HP iPAQ Pocket PC Reference Guide</i> , or ActiveSync Help on the <i>HP iPAQ Pocket PC Companion CD</i>
Register your HP iPAQ Pocket PC to receive the latest information as well as special offers on iPAQ Pocket PC accessories and software	Register online at: www.register.hp.com
Warranty and service information	Worldwide Limited Warranty Statement in the box
Frequently Asked Questions (FAQs)	http://www.hp.com/go/ipaq_h5450_faq

troubleshooting and support information

for information on... see this source...

Connecting to and synchronizing with a computer	ActiveSync Help on your personal computer. To view Help , start ActiveSync, click Help , then click Microsoft ActiveSync Help .
Troubleshooting information on ActiveSync connections	The ActiveSync troubleshooter on your computer. After installing the desktop software, click Help , then Troubleshooter .
Exchanging files after synchronizing your HP iPAQ Pocket PC	Online ActiveSync on your computer. View the online help by opening Microsoft ActiveSync on your computer, then select Help , Microsoft ActiveSync Help .
Last-minute updates and detailed technical information	The Read Me files, located in the Microsoft ActiveSync folder on the <i>HP iPAQ Pocket PC Companion CD</i>
Support for your HP iPAQ Pocket PC	http://www.hp.com/support/pocketpc
Safety Information	Important Safety Information on the <i>HP iPAQ Pocket PC Companion CD</i>
Up-to-date information on Windows-powered devices	http://www.microsoft.com/mobile/pocketpc

registering the hp iPAQ Pocket PC

You can receive the latest information on your iPAQ Pocket PC as well as special offers on iPAQ Pocket PC accessories and software by registering online at <http://www.register.hp.com>.

Note: This is a Class B digital device, pursuant to Part 15 of the FCC Rules. Refer to the documentation CD for Class B information.



www.hp.com



336701-001

© 2003 Hewlett-Packard Development Company, L.P. HP Hewlett-Packard and the Hewlett-Packard logo are trademarks of Hewlett-Packard Company in the U.S. and other countries. iPAQ is a trademark of Hewlett-Packard Development Company, L.P., in the U.S. and other countries. Microsoft, Windows, Outlook, ActiveSync and the Windows logo are trademarks of Microsoft Corporation. All other product names mentioned herein may be trademarks of their respective companies. First Edition April 2003.

hp iPAQ Pocket PC h5400 series

getting started

1

install the main battery

Insert the tabs on the bottom of the removable battery into the slots on the iPAQ Pocket PC. Push the battery upward and snap into place.



2

power on

Insert the stylus into the reset hole and push inward on the stylus to perform a normal reset. Your iPAQ Pocket PC will automatically power on.



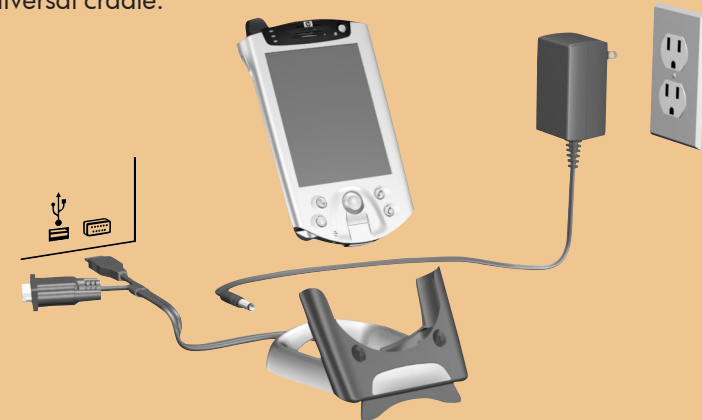
3

set up your unit

Follow the steps on the Welcome screen. Tap to open the Today screen. Personalize your device. For detailed instructions, see the Reference Guide on Companion CD.

install Outlook and ActiveSync


1. Insert the *HP iPAQ Pocket PC Companion CD* into your computer and click Start Here.
2. Install Microsoft Outlook, if necessary.
3. Click Install ActiveSync.
4. Follow the instructions on the *HP iPAQ Pocket PC Companion CD*.
5. Insert the AC Adapter plug into an electrical outlet.
6. Connect the AC connector to the universal cradle.

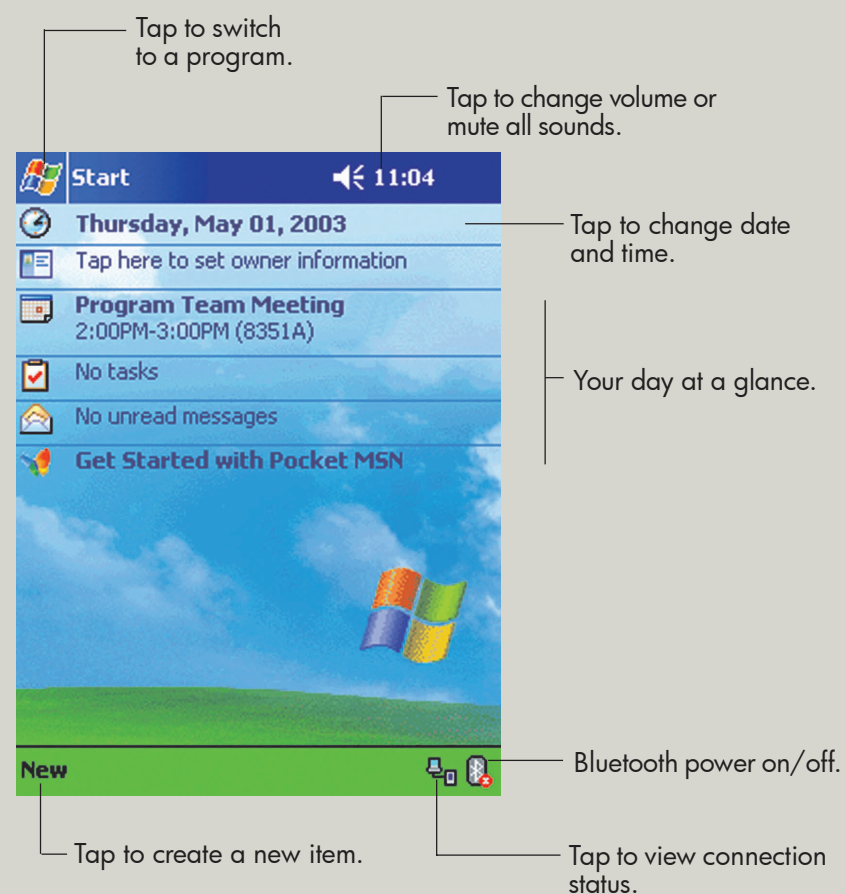


7. Insert the serial or USB connector on the universal cradle to your personal computer.
8. Slide the bottom of your iPAQ Pocket PC into the universal cradle.
9. Learn more about your iPAQ Pocket PC.

using your iPAQ Pocket PC

Today Screen

When you turn on your HP iPAQ Pocket PC for the first time each day (or after 4 hours of inactivity), you see the Today screen. You can also display it by tapping  and then Today. On the Today screen, you can see at a glance important information for the day.



getting acquainted

Front Panel

1. Speaker: Alarms, voice, music
2. Power Indicator:
amber flash = charging
amber solid = charged
3. Stylus: Push to eject, push to lock
4. Power Button: Turn unit on and off
5. Color Display: High contrast color screen
6. Inbox Button*: Access your Inbox for sending and receiving e-mail
7. iTask Button*: Open, close, and switch between applications, run utilities, and change settings
8. 5-Way Navigation Button: Scroll through a list and push to select (similar to using a joystick)
9. Fingerprint Reader: Biometric enhanced security
10. Microphone: Record your voice or other sounds
11. Calendar Button*: Schedule appointments, set reminders, or view your calendar
12. Contacts Button*: Display a list of your contacts from the category you select
13. Volume: Up/Down/Mute Voice and Record
14. Light Sensor: Automatically adjusts the backlight when selected
15. Active Bluetooth Indicator: Flashes "blue" when Bluetooth is on
16. Wireless LAN Indicator: green flash = wireless link
amber flash = no wireless link
17. Antenna: Transmits and receives signals

* These buttons are programmable but at startup they are assigned by default.

Back Panel

1. Slim Removable Battery: Removable/rechargeable battery
2. Battery Latch: Slide up to remove the battery
3. Product Label: Needed for service and product-related questions

Top Panel

1. Antenna: Transmits and receives signals
2. Stylus: Push to eject, push to lock
3. Infrared/Universal Remote: Beams information to/from other infrared-enabled devices
4. Secure Digital I/O (SDIO) Expansion Slot: Supports Secure Digital (SD) storage and expansion cards

Bottom Panel

1. 3.5 mm Stereo/Microphone Head phone Jack: Connect your headphone or headset or earpiece
2. Charging/Communications Port: Connect to universal cradle, synchronization cable, or charging adapter
3. Normal Reset Button: Reset your iPAQ Pocket PC
4. Expansion Pack Connector: Connect to an optional Expansion Pack
5. Microphone: Record your voice or other sounds

Universal Cradle

1. Stabilizers: Stabilizes the iPAQ Pocket PC when cradled without an Expansion Pack
2. Release Button: Releases the stabilizers from the locked position

