

HP Compaq Business Desktop
dx2000 Microtower Models

Illustrated Parts Map
Celeron and Pentium Processors



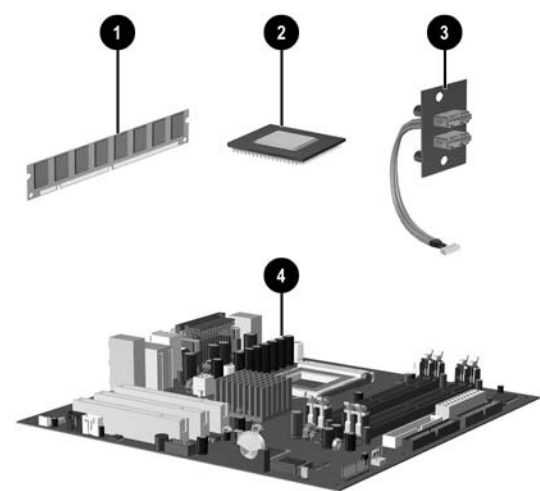
© 2004 Hewlett-Packard Development Company, L.P.
HP and the HP logo are trademarks of Hewlett-Packard Development Company, L.P.
Intel and Celeron are US registered trademarks of Intel Corporation. All other product names mentioned herein may be trademarks of their respective companies.

HP shall not be liable for technical or editorial errors or omissions contained herein. The information in this document is provided “as is” without warranty of any kind and is subject to change without notice. The warranties for HP products are set forth in the express limited warranty statements accompanying such products. **Nothing herein should be construed as constituting an additional warranty.**

Product of the United States.

1st Edition, March 2004

Document Part Number 359780-001



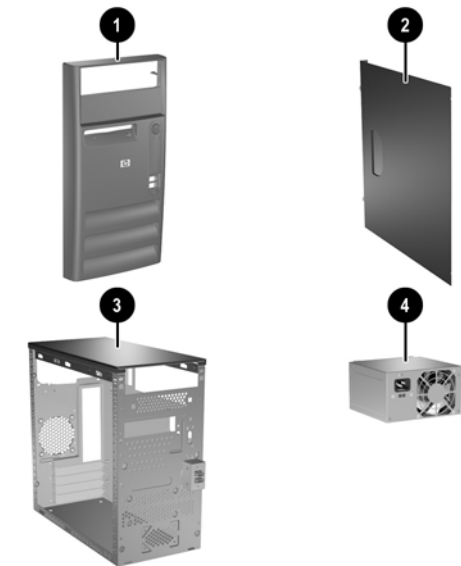
Standard and Optional Boards

Memory modules		
1	128 MB/PCI 3200	335697-001
*	256 MB/PCI 3200	335698-001
*	512 MB/PCI 3200	335699-001
*	1 GB/PCI 3200	335700-001
*	128 MB/333 MHz FSB	314795-001
*	256 MB/333 MHz FSB	314793-001
*	512 MB/2333 MHz FSB	314796-001

Intel Processors with alcohol pad and thermal grease		
2	2.4 GHz Celeron, 128 K cache, 400 MHz FSB	351495-001
	2.5 GHz Celeron, 128 K cache, 400 MHz FSB	344056-001
	2.6 GHz Celeron, 128 K cache, 400 MHz FSB	344057-001
	2.8 GHz Celeron, 128 K cache, 400 MHz FSB	355399-001
	2.6 GHz Pentium, 512K cache, 533 MHz FSB, HT	333863-001
	2.8 GHz Pentium, 512K cache, 533 MHz FSB, HT	333864-001
	3.0GHz Pentium, 512K cache, 533 MHz FSB, HT	333865-001
	3.2 GHz Pentium, 512K cache, 533 MHz FSB, HT	335813-001
	2.66 GHz Pentium, 512K cache, 533 MHz FSB	333486-001
	2.8 GHz Pentium, 512K cache, 533 MHz FSB	305051-001
	3.0 GHz Pentium, 512K cache, 533 MHz FSB	315637-001
	2.8 GHz Pentium, 1MB cache, 533 MHz FSB	359573-001
*	2.8 GHz Pentium, 1MB cache, 800 MHz FSB	348617-001
*	3.0 GHz Pentium, 1MB cache, 800 MHz FSB	359574-001
*	3.2 GHz Pentium, 1MB cache, 800 MHz FSB	351768-001
3	Front I/O PCA with cable	351073-001
4	System board without AGP socket with alcohol pad and thermal grease	351067-001

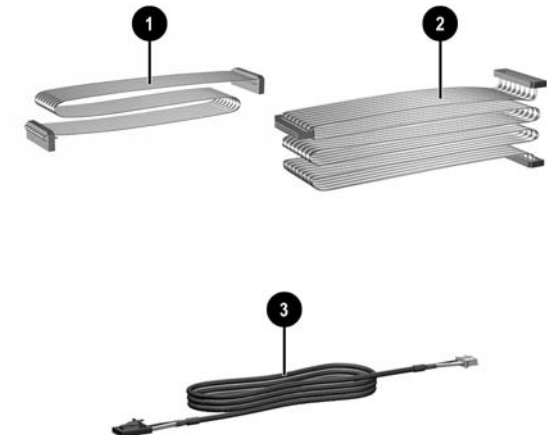
Other boards		
*	Lucent 56K PCI Win modem	239411-001

* *Not shown*
#*Spared with alcohol wipe and thermal grease*



System Unit		
1	Front bezel with diskette drive bezel, Carbonite/Silver (See Miscellaneous parts for kit contents)	337555-001
2	Access panel (left or right side) (See Miscellaneous parts for kit contents)	337555-001
3	Chassis	not spared
4	Power supply, PFC	351071-001
*	Power supply, non-PFC	351070-001

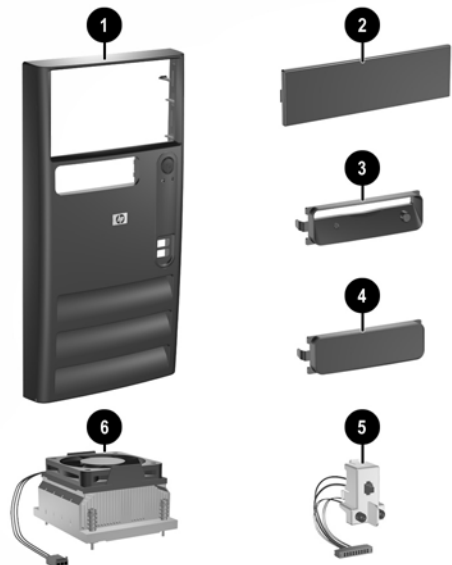
* *Not shown*



Cables		
1	Diskette drive cable	335190-001
2	Hard drive cable, primary ATA (2 devices)	335188-001
*	Optical drive cable, secondary ATA (2 devices)	335189-001
3	Audio cable	335191-001

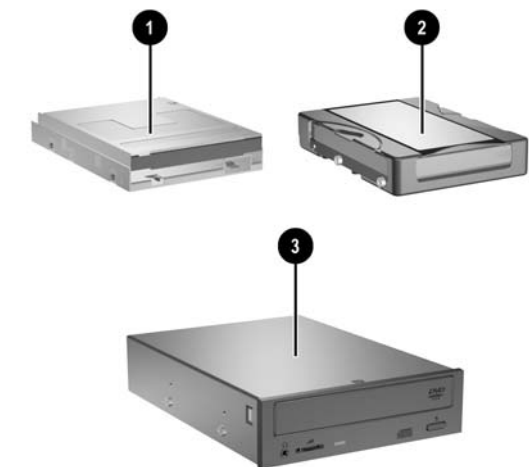
* *Not shown*

Keyboards (not illustrated)			
Keyboard, PS2		335192-xxx	
Arabic	-171	Latin American Spanish	-161
Brazil	-201	Peoples Republic of China	-AA1
French Canadian	-121	Taiwanese	-AB1
International	-B31	Thai	-281
Japanese	-291	U.S.	-001
Korean	-AD1		



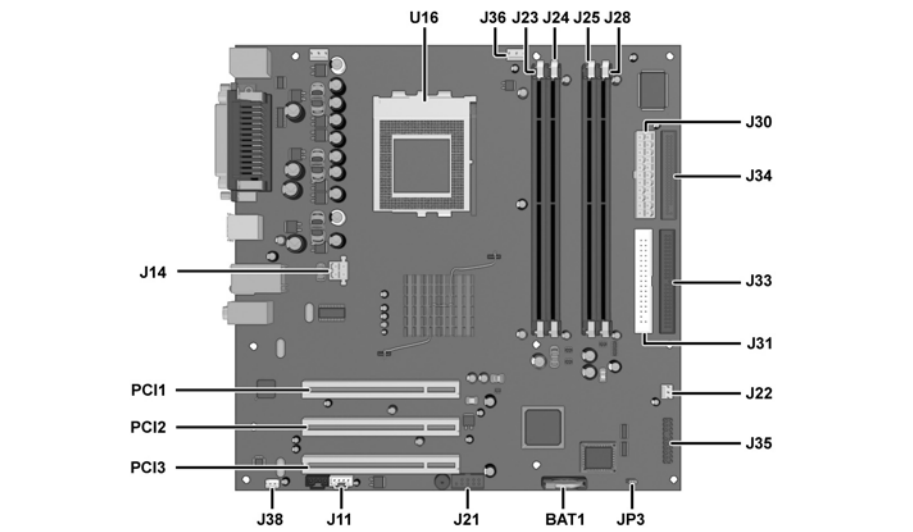
Miscellaneous Parts		
Front bezel kit, carbonite and silver, includes:		337555-001
1	Front bezel	
2	5.25" drive bezel blank with metal shield	
3	Diskette drive bezel	
4	3.5" drive bezel blank with metal shield	
*	Side access panel (see item 2 in System unit)	
5	Power switch/LED with switch mounting bracket	342724-001
6	Heatsink with alcohol pad and thermal grease (made of copper for all processors)	359954-001
*	Chassis fan with 4 fasteners	351068-001
*	Rear I/O shield	337554-001
*	Mouse, PS2, scroll type	335181-001
*	Mouse, PS2, scroll type	323614-001
*	Mouse, optical	323617-001
*	Battery, real-time clock	153099-001
*	Internal speaker	345979-001
Miscellaneous screw kit, includes:		337552-001
*	#6-32 x .025 lg an head (262508-001) (6 ea)	
*	#6-32 x .187 lg hi top (262508-003) (6 ea)	
*	M3 x 5mm lg pan head (263585-001) (8 ea)	
*	M3 x 6.5mm lg pan head (263585-002) (8 ea)	

* *Not shown*



Mass Storage Devices		
1	Diskette drive, 3.5-inch	336218-001
2	40-GB\5400 RPM hard drive	335176-001
*	40-GB\7200 RPM hard drive	335392-001
*	80-GB\5400 RPM hard drive	334177-001
*	80-GB\7200 RPM hard drive	337027-001
3	48X CD-ROM drive	335389-001
*	52X CR-ROM drive	333969-001
*	CD RW drive, 48X/24X	335391-001
*	16X DVD drive	335390-000
*	48X/24X/48X+16X CD-RW/DVD-ROM drive	336783-001

* *Not shown*



System Board Connectors and Jumpers (position of some untitled components may vary in location)			
BAT1	Real-time-clock battery	J33	Primary IDE
J11	CD in audio	J34	Diskette drive
J14	12 V power (4-pin)	J35	Main power switch/LED
J21	Front side USB	J36	CPU fan
J22	Chassis fan	J38	Mono audio out
J23	DIMM 1	JP3	Clear CMOS
J24	DIMM 2	PCI1	Expansion slot1
J25	DIMM 3	PCI2	Expansion slot 2
J28	DIMM 4	PCI3	Expansion slot 3
J30	ATX Main power (20-pin)	U16	Microprocessor
J31	Secondary IDE		

JP3		
Status	Jumper Setting	Notes
Normal	1-2	Default
Clear	2-3	5 seconds

System Hardware Interrupts			
IRQ	System Function	IRQ	System Function
0	Timer Interrupt	8	Real-Time Clock
1	Keyboard	9	Unused
2	Interrupt Controller Cascade	10	Unused, available for PCI
3	Serial Port (COM B)	11	Unused, available for PCI
4	Serial Port (COM A)	12	Mouse
5	Unused, available for PCI	13	Coprocessor
6	Diskette Drive	14	Primary ATA (IDE) Controller
7	Parallel Port (LPT 1)	15	Secondary ATA (IDE) Controller

Clearing CMOS*

The computer's configuration (CMOS) may occasionally be corrupted. If it is, it is necessary to clear the CMOS memory using by performing the following procedure:

- ⚠

CAUTION: The power cord must be disconnected from the power source before changing the jumper setting. (NOTE: All LEDs on the board should be OFF). Failure to do so may damage the system board
- Turn off the computer and any external devices, then disconnect the power cord from the power outlet.
 - Remove the access panel.
 - Locate jumper JP3 and move the jumper from pins 1-2 to pins 2-3.
 - Leave the jumper on pins 2-3 for 5 seconds.
 - Move the jumper back to pins 1-2.
 - Replace the access panel.
 - Connect the power cord to the power outlet.
 - Turn on the computer, allow it to start.

NOTE: Clearing CMOS clears all passwords.

Diagnostic LEDs			
LED	Color	LED Activity	State/Message
Power	Green	On	(S0) Computer on
Power	Green	1 blink every 2 seconds	(S1) Normal Suspend Mode
Power	Green	1 blink every 2 seconds	(S3) Suspend to RAM
Power	Clear	Off	(S4) Suspend to Disk (if applicable)
Power	Clear	Off	(S5) Computer off
Power	Red/Green	Red when flashing ROM; Green 1 blink every second when user can restart	Boot block recovery w/Embedded Video
Power	Red	1 blink every second for 2 seconds	CPU thermal shutdown
Power	Red	1 blink every second for 5 seconds, then 2 second pause. 5 beeps.	No memory installed
Power	Red	1 blink every second for 6 seconds, then 2 second pause. 6 beeps.	Graphics card error
Power	Red	1 blink every second for 7 seconds, then 2 second pause. 7 beeps.	System board failure
Hard Drive	Green	Blinking	Hard drive activity

Computer Setup (F10) Utility Features (not all features may be available)	
System Information	Product Name Chipset Type MAC Address BIOS Version BIOS Release Date CPU type CPU speed FSB speed CPU ID L1 and L2 Cache Size Ratio Status DDR Frequency Memory DIMM1 Memory DIMM2 Memory DIMM3 Memory DIMM4 Available System Memory Legacy VGA Memory Chassis Serial Number Asset Tag Number UUID
	Set Time System Date Floppy Drive size and capacity IDE Devices Auto Detect
Advanced CMOS Setup	Boot Device Priority Try Other Boot Devices POST Delay Time (in seconds) System Keyboard APIC ACPI SCI IRQ Hyper-Threading Technology Internal Graphics Mode Select
Power Management Setup	ACPI Standby State Restore on AC/Power Loss Resume on Ring Resume on PME
Peripheral Setup	OnBoard LAN OnBoard LAN Chip Boot ROM Init. Graphics Adapter Priority USB Controller USB 1.1 Device Legacy Support OnBoard Serial Port OnBoard Parallel Port Parallel Port Mode
Hardware Monitor	CPU Ratio Selection CPU Warning Temperature CPU Shutdown Temperature System Warning Temperature System Shutdown Temperature CPU Temperature System Temperature CPU FAN Speed Chassis FAN Speed CPU VID Vccp +1.5V +2.5V +3.3V +5.0V +12.0V HVcc (+3.3VSB)
Password Option	Change Supervisor Password Password Status Password Check
Load Default Settings	
Save Settings and Exit	
Exit Without Saving	

Note: See Computer Setup (F10) Utility Guide on the Documentation Library CD.