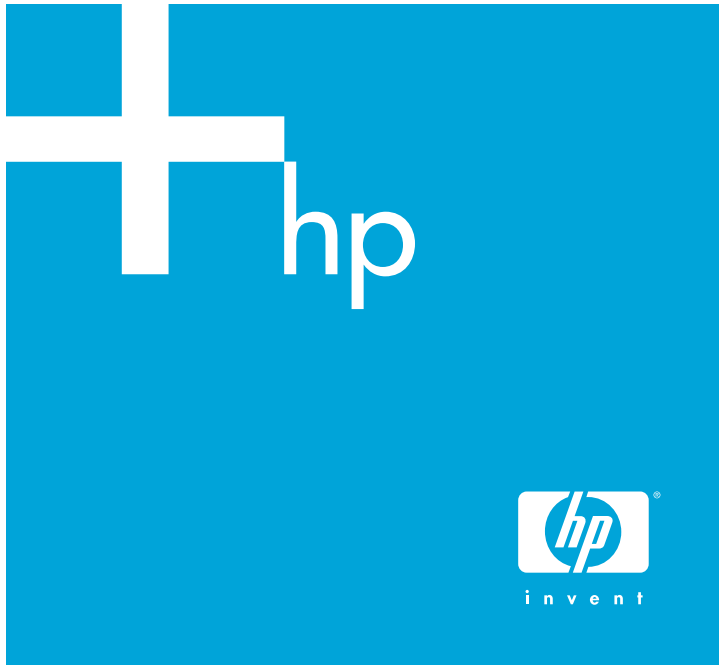


# HP StorageWorks All-in-One Storage System quick start instructions



Printed on at least 50% total recycled fiber  
with at least 10% post-consumer paper

© Copyright 2006 Hewlett-Packard Development Company, L.P.

First edition (September 2006)

Printed in the US.

[www.hp.com](http://www.hp.com)

Part no. 434649-001



\*434649-001\*

## About this document

These instructions are intended for professionals who will be installing, setting up, and configuring the All-in-One Storage System.

Experience with Microsoft® administrative procedures and system and storage configurations is helpful, but not required.

The Quick Start poster provides you with basic instructions to get up and running using the system default options. For more detailed information, or information about non-default options available to you, refer to the documentation included with your product.

Other HP documentation can be found with this product, on the documentation CD, and on the HP documents Web site at:  
<http://www.hp.com/support/manuals>.

## Important safety information

### ⚠ Important Safety Information

Before installation, read *Important Safety Information* on the Documentation CD.  
قبل التثبيت، اقرأ معلومات هامة حول السلامة على القرص المضغوط .Documentation CD.  
Před instalací si přečtěte příručku *Důležité bezpečnostní informace* na disku CD.  
安裝之前，請閱讀文檔 CD 上的 *重要安全信息*。  
安裝前，請閱讀說明文件光碟上的「重要的安全性資訊」。  
Læs dokumentet *Vigtige sikkerhedsoplysninger* på dokumentations-cd'en, før produktet installeres.  
Lesen Sie vor der Installation die *Sicherheitshinweise* auf der Documentation CD.  
Enne installimist vt dokumentatsiooni CD-lt peatükki „*Tähtis ohutusteave*“.  
Avant l'installation, lisez les *Informations importantes relatives à la sécurité* CD Documentation.  
Πριν την εγκατάσταση, διαβάστε *Σημαντικές πληροφορίες ασφαλείας* στο CD Documentation.  
לפני ההתקנה, קרא את המידע הבטיחותי החשוב שב-Documentation CD (תקליטור התיעוד).  
Prije ugradnje, pročitajte *Važne sigurnosne informacije* na dokumentacijskom CD-u.  
Prima dell'installazione, leggere sul CD le *Informazioni importanti sulla sicurezza*.  
インストール前に、Documentation CDの『安全』に使用していただくために『をお読みください』。  
설치하기 전에 Documentation CD의 주요 안전 수칙을 읽으십시오.  
Pirms instalācijas, izlasiet drošības informāciju dokumentācijas CD.  
Prieš diegdami perskaitykite *Svarbią saugos informaciją* dokumentacijos CD.  
Telepítés előtt olvassa el a dokumentációs CD *Fontos biztonsági tudnivalók* dokumentumát.  
Lees de *Belangrijke veiligheidsinformatie* op de documentatie-cd voordat u de installatie uitvoert.  
Les "Viktig sikkerhetsinformasjon" på dokumentasjons-CDen før du installerer dette produktet.  
Przed instalacją przeczytaj *Ważne informacje dotyczące bezpieczeństwa* na dysku CD Documentation.  
Antes da instalação, leia as *Informações Importantes sobre Segurança* no CD da Documentação.  
Перед установкой ознакомьтесь с разделом *Указания по технике безопасности* на компакт-диске «Документация».  
Pred inštaláciou si prečítajte časť *Dôležité bezpečnostné informácie* na disku Documentation CD.  
Pred namestitvijo preberite *Pomembne varnostne informacije* na CD-ju Documentation.  
Tärkeisiin turvatietoihin" Documentation CD -levyllä ennen tuotteen asentamista.  
Läs dokumentet *Viktig säkerhetsinformation* på dokumentations-cd:n innan du installerar denna produkt.  
Yüklemeden önce, Documentation CD'sindeki *Önemli Güvenlik Bilgileri*'ni okuyun.  
Перед установкою прочитайте *Важливі відомості з безпеки* на CD документації.

## Overview

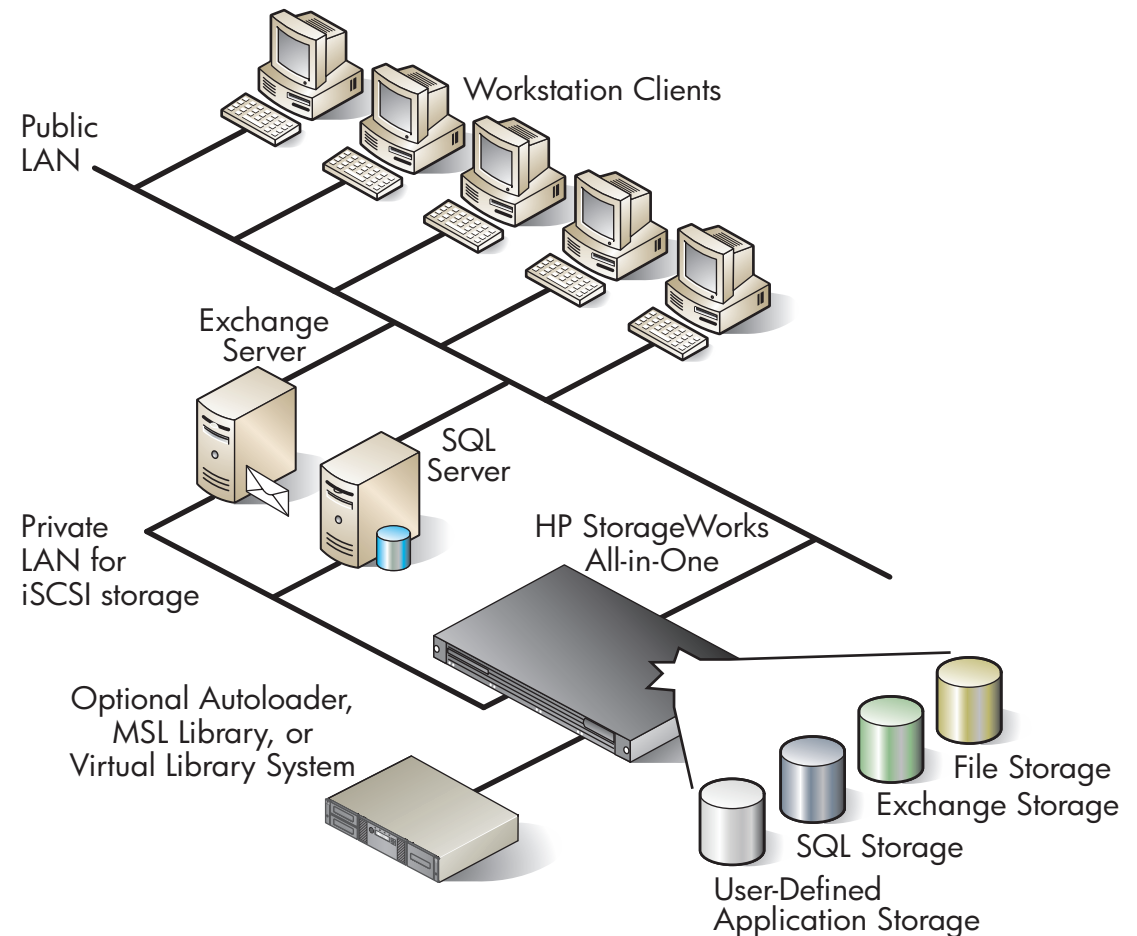
The HP StorageWorks All-in-One Storage System is a multi-function storage solution that includes the following functions:

- File serving
- Print serving
- Exchange storage
- SQL server storage
- Application storage
- Data protection

Other optional features such as replication and snapshots ensure that your data is always available and safe.

In this example deployment scenario, network clients connect to the HP All-in-One Storage System over the standard LAN infrastructure, and utilize this connection for file serving and print serving. Exchange and SQL servers connect to the HP All-in-One Storage System through a separate dedicated LAN. The purpose of the dedicated LAN is to provide storage for the databases using the iSCSI protocol. This guarantees dedicated network bandwidth for database storage as well as increased security. HP strongly recommends configuring all iSCSI-based storage for application servers on a dedicated Ethernet subnet.

For detailed instructions and best practices for managing your storage, see the *HP StorageWorks All-in-One Storage System Administration Guide*.



**NOTE:** The HP StorageWorks All-in-One Storage System unifies various technologies using a common management solution. Because these technologies tightly interact with each other, it is important to use the official HP All-in-One Storage System patch and update process as the **ONLY METHOD** to update supporting software technologies such as HP Data Protector Express, Microsoft iSCSI Target software, etc. Do not independently update these supporting software technologies.

## Prepare for installation

### Check kit contents

Unpack the HP All-in-One Storage System and confirm that the following components are included:

- HP StorageWorks All-in-One Storage System
- Bezel, bezel brackets, and screws
- Power cord
- Slide rail assembly
- Documentation Kit, Safety and Disposal Documentation CD
- HP StorageWorks All-in-One Storage System Recovery DVD
- End User License Agreement
- Certificate of Authenticity card

### Determine a network access method

Before installing the storage system hardware, decide on an access method that will be used to connect to the storage server. If your network does not have a Dynamic Host Configuration Protocol (DHCP) server, you must connect using the direct attach method. If your network has a DHCP server, you can connect using other methods as described in this table.

Access method	Procedure	Requirements
Direct attach	Connect a monitor, keyboard, and mouse directly to the storage system.	Mandatory if no DHCP server on network.
Remote browser	Access the storage system through a client running Internet Explorer 5.5 (or later).	ActiveX controls must be enabled on the remote client and the serial number or IP address of the storage system is required.
Remote desktop	Access the storage system through a client running Remote Desktop Connection.	Serial number or IP address of the storage system is required.

For detailed instructions on using each of these access methods, see Chapter 3 of the *HP StorageWorks All-in-One Storage System Installation Guide*.

## Install the storage system hardware and power on

1. Install the rail kit or tower-to-rack conversion kit by following the *HP StorageWorks All-in-One Storage System installation instructions*.
2. If connecting to the storage system using the direct attach method, connect the following cables to the back panel of the storage system in the following sequence: keyboard, mouse, network cable, monitor cable, and power cable.  
-or-  
If connecting to the storage system using either the remote browser or remote desktop method, connect only the network cable and power cable.



**NOTE:** The keyboard, mouse, and monitor are not provided with the HP All-in-One Storage System.

3. Power on the system by pushing the power button on the front panel. Remove the bezel if needed. The system starts and displays the following screen:



The installation process takes approximately 10-15 minutes and requires no user interaction.



**NOTE:** If you plan to migrate data from application servers on your network, you can use this time to install the required HP All-in-One Storage System Agent on those servers. For more information, see Step 5 of these instructions.

When the HP StorageWorks All-in-One Storage System installation process is complete, the system prompt appears.

4. At the system prompt, enter the default user name and password:

**user name** = administrator

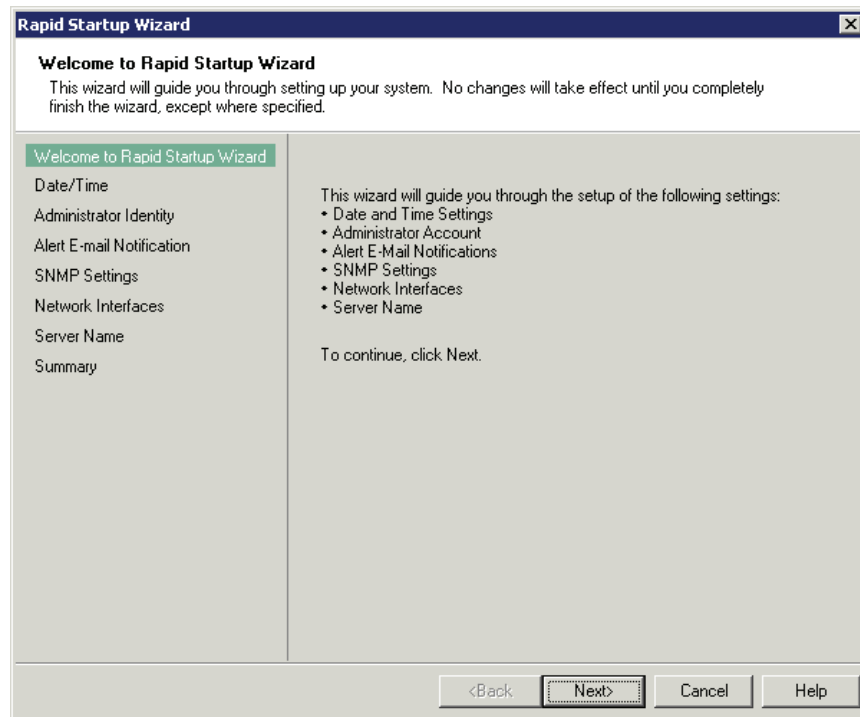
**password** = hpinvent

After logging in for the first time, the Welcome screen of the Rapid Startup Wizard opens.

## Set up the system with the Rapid Startup Wizard

The Rapid Startup Wizard guides you through setting up your system with basic configuration information. Before migrating data from other applications or configuring other storage settings, you should complete the Rapid Startup Wizard.

1. On the Rapid Startup Wizard Welcome screen, click Next.



2. On each screen of the wizard, complete the requested information.

The following table lists the configuration data that is needed to complete the Rapid Startup Wizard and initialize the HP All-in-One Storage System.

Administrator Identity	
User name	The system administrator's user name, which is set by default to administrator.
User password	The system administrator's password, which is set by default to hpinvent.
Alert E-mail Notification	
Send alert e-mails to	E-mail address for critical, warning, or informational messages about system status.
Send alert e-mails from	Must be a valid, well-formed e-mail address that will appear as the sender of system status e-mail alerts.
SMTP server name or IP address	Must be an e-mail server on your network that supports the Simple Mail Transfer Protocol (SMTP).
SNMP Settings (to be completed only if needed)	
Contact person	System administrator for the storage system. The contact and location will be provided to any SNMP management computer that requests them.
System location	Any text string, such as location or phone number.
Community names	A community name is used for network authentication when sending outgoing SNMP messages.
Trap destinations	The IP address of a management computer that will receive SNMP messages from the storage system using the above community names.
Network Interfaces (to be completed for non-DHCP configurations)	
Local area connection	A local area connection is automatically created for each network adapter that is detected. All local area connections can be renamed to prevent confusion.
IP address	An Internet Protocol (IP) address is assigned to the server. If it is not automatically assigned, enter the IP address that you want to assign to the server.
Subnet mask	A mask is used to determine what subnet an IP address belongs to.
Default gateway	The gateway in a network that the network adapter will use to access all other networks.
DNS server	A Domain Name System (DNS) server name is required to provide for domain name to IP address resolution.
WINS server	A Windows Internet Naming Service (WINS) server name is required to determine the IP address associated with a particular network computer.
Server name	
Server name	Assign a unique name to the storage system. This name identifies the storage system on the network.

The final screen of the Rapid Startup Wizard is a Summary page that displays the new configuration settings. If you need to make changes, you can go back to any previous wizard screen by clicking the Back button.

3. Click Finish after completing the configuration changes.  
You may be prompted to restart the system after applying the changes.

## Prepare for data migration

After basic configuration information has been set using the Rapid Startup Wizard, a dialog box appears that provides additional storage and data migration configuration options; however, depending on your needs, an additional installation procedure might be needed before proceeding.

**IMPORTANT!** Before using the available wizards for scheduling data migration of SQL, Exchange, or User-defined data, you must first install the All-in-One Storage Manager Agent on those application servers. Follow these instructions before performing a data migration operation.



**NOTE:** If you do not need to prepare for data migration at this point in the configuration process, move on to step 6 of this procedure.

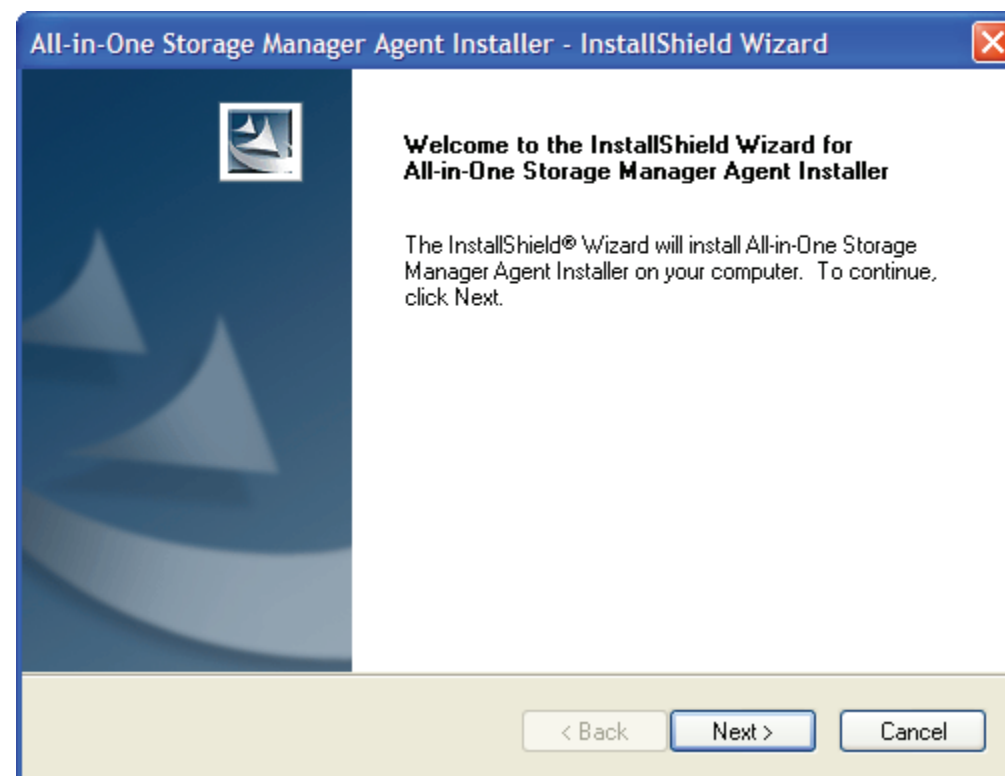
Installing the All-in-One Storage Manager Agent on network application servers:

1. On the application server that stores data to be migrated, insert the *HP StorageWorks All-in-One Storage System Recovery DVD*.



**NOTE:** If the application server is in a remote location, use Remote Desktop Connection to access the server, copy the Agent installation files, and run the Agent installation.

2. If Autorun is enabled on the server, a window opens to the <DVD+RW Drive>:\All-in-One Storage Manager\Agent folder on the DVD. If Autorun is not enabled on the server, navigate to this folder on the DVD.
3. Double-click **asmagentinstaller.exe**.
4. Follow the on-screen installation instructions.



After completing the All-in-One Storage Manager Agent installation on the application servers, you can then schedule data migration using the HP All-in-One Storage System wizards.

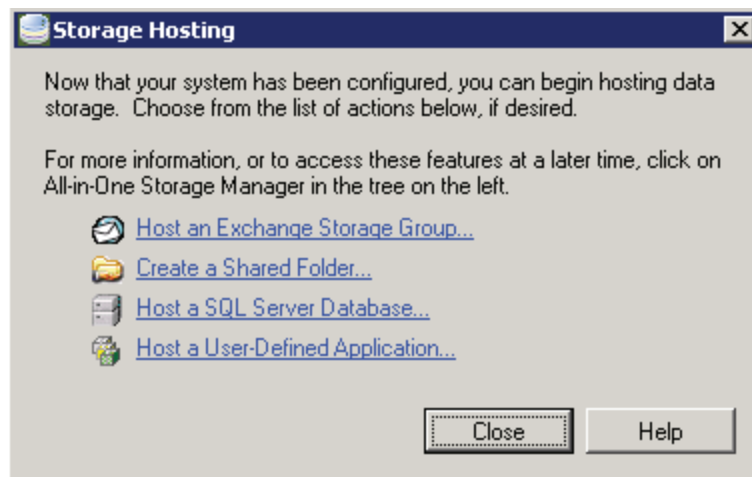
## Configure storage and schedule data migration

After preparing for data migration, you can schedule the migration using the wizards that are available on the Storage Hosting screen. You can also allocate storage settings by clicking **Create a shared folder**.



**NOTE:** If you do not need to perform any of these tasks at this point during the configuration process, click **Close**.

**IMPORTANT!** Because the data migration process can take a considerable amount of time to complete and because application servers are taken offline during this process, HP highly recommends that you schedule migration operations during non-business hours. HP also highly recommends that you back up application data and logs prior to migration.



Create a Shared Folder Wizard (6 screens)

Host an Exchange Storage Group Wizard (6 screens)

Host a SQL Server Database Wizard (7 screens)

Host a User-Defined Application Wizard (6 screens)

# 7

## Manage your storage

After you have used the All-in-One Storage System wizards to configure your storage settings and migrate application data, you can monitor your applications and modify settings with the All-in-One Storage Manager.

In the Action pane, choose from the following views:

- Application View — Monitors storage values for applications and shared folders.
- Storage View — Monitors storage values for logical disks and volumes.
- Application Server View — Monitors hosted application servers.

