

Notebook Tour

User Guide

© Copyright 2009 Hewlett-Packard
Development Company, L.P.

Bluetooth is a trademark owned by its proprietor and used by Hewlett-Packard Company under license. Microsoft and Windows are U.S. registered trademarks of Microsoft Corporation. SD Logo is a trademark of its proprietor.

The information contained herein is subject to change without notice. The only warranties for HP products and services are set forth in the express warranty statements accompanying such products and services. Nothing herein should be construed as constituting an additional warranty. HP shall not be liable for technical or editorial errors or omissions contained herein.

First Edition: August 2009

Document Part Number: 539584-001

Product notice

This user guide describes features that are common to most models. Some features may not be available on your computer.

Safety warning notice

-
- ⚠ **WARNING!** To reduce the possibility of heat-related injuries or of overheating the computer, do not place the computer directly on your lap or obstruct the computer air vents. Use the computer only on a hard, flat surface. Do not allow another hard surface, such as an adjoining optional printer, or a soft surface, such as pillows or rugs or clothing, to block airflow. Also, do not allow the AC adapter to contact the skin or a soft surface, such as pillows or rugs or clothing, during operation. The computer and the AC adapter comply with the user-accessible surface temperature limits defined by the International Standard for Safety of Information Technology Equipment (IEC 60950).
-

Table of contents

1 Identifying hardware

2 Components

Top components	2
TouchPad	2
Lights	3
Buttons and fingerprint reader (select models only)	5
Keys	7
Front components	8
Rear component	9
Right-side components	9
Left-side components	10
Bottom components	11
Display components	12
Wireless antennas (select models only)	13
Additional hardware components	14

3 Labels


Index	17
-------------	----

1 Identifying hardware

To see a list of hardware installed in the computer:

- ▲ Select **Start > Control Panel > System and Security**. Then, in the **System** area, click **Device Manager**.

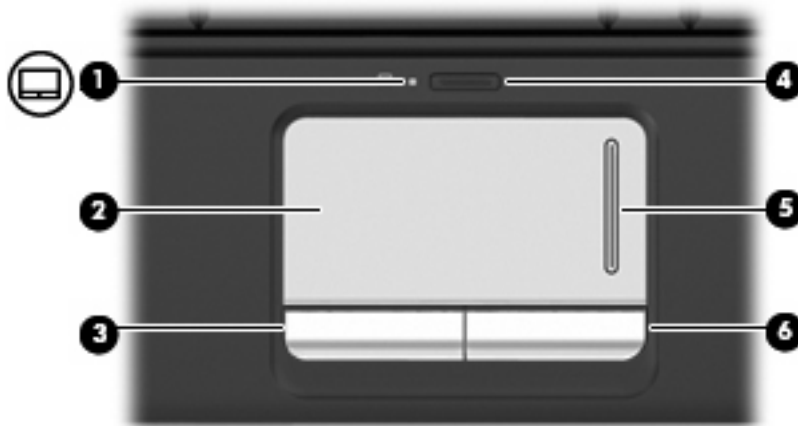
You can also add hardware or modify device configurations using Device Manager.

 **NOTE:** Windows® includes the User Account Control feature to improve the security of your computer. You may be prompted for your permission or password for tasks such as installing applications, running utilities, or changing Windows settings. Refer to Help and Support for more information.

2 Components

Top components

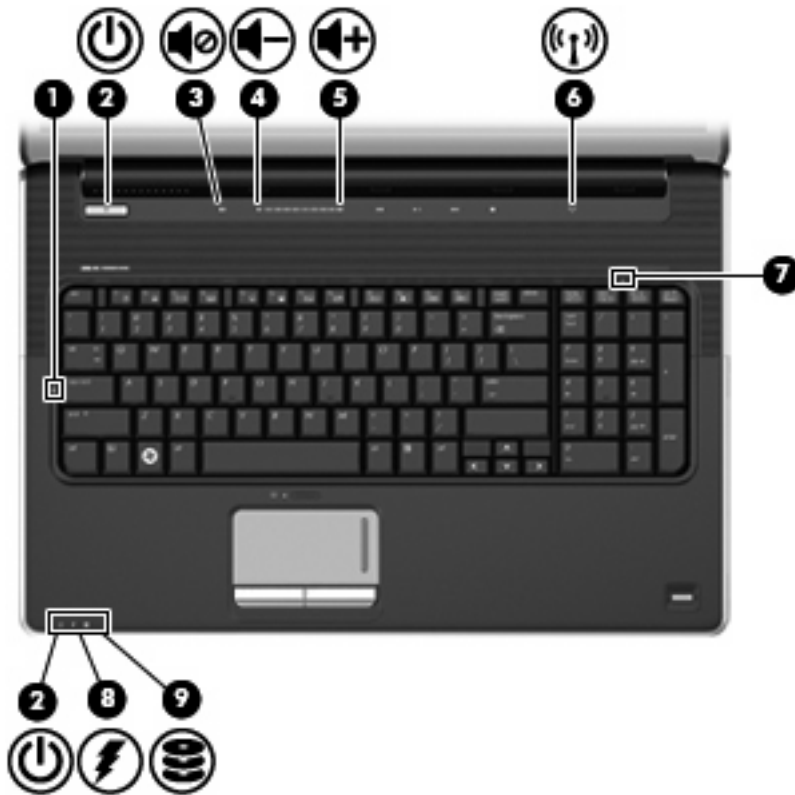
TouchPad



Component	Description
(1) TouchPad light	<ul style="list-style-type: none">• White: TouchPad is enabled.• Amber: TouchPad is disabled.
(2) TouchPad*	Moves the pointer and selects or activates items on the screen.
(3) Left TouchPad button*	Functions like the left button on an external mouse.
(4) TouchPad on/off button	Enables/disables the TouchPad.
(5) TouchPad scroll zone	Scrolls up or down.
(6) Right TouchPad button*	Functions like the right button on an external mouse.

*This table describes factory settings. To view and change pointing device preferences, select **Start > Devices and Printers**. Then, right-click the device representing your computer, and select **Mouse settings**.

Lights



Component	Description
(1) Caps lock light	On: Caps lock is on.
(2) Power lights (2)*	<ul style="list-style-type: none"> On: The computer is on. Blinking: The computer is in the Sleep state. Off: The computer is off or in Hibernation.
(3) Volume mute light	<ul style="list-style-type: none"> White: Computer sound is on. Amber: Computer sound is off.
(4) Volume down light	On: The volume scroll zone is being used to decrease speaker volume.
(5) Volume up light	On: The volume scroll zone is being used to increase speaker volume.
(6) Wireless light	<ul style="list-style-type: none"> On: An integrated wireless device, such as a wireless local area network (WLAN) device and/or a Bluetooth® device, is on. Off: All wireless devices are off.
(7) Num lock light	The integrated numeric keypad is enabled, or num lock is enabled on a connected optional numeric keypad.

Component	Description
<p>(8) Battery light</p>	<ul style="list-style-type: none"> • On: A battery is charging. • Blinking: A battery that is the only available power source has reached a low battery level. When the battery reaches a critical battery level, the battery light begins blinking rapidly. • Off: If the computer is plugged into an external power source, the light is turned off when all batteries in the computer are fully charged. If the computer is not plugged into an external power source, the light stays off until the battery reaches a low battery level.
<p>(9) Drive light</p>	<ul style="list-style-type: none"> • Blinking: The hard drive or optical drive is being accessed. • Amber: HP ProtectSmart Hard Drive Protection has temporarily parked the hard drive.

*The 2 power lights display the same information. The light on the power button is visible only when the computer is open. The power light on the front of the computer is visible whether the computer is open or closed.

Buttons and fingerprint reader (select models only)

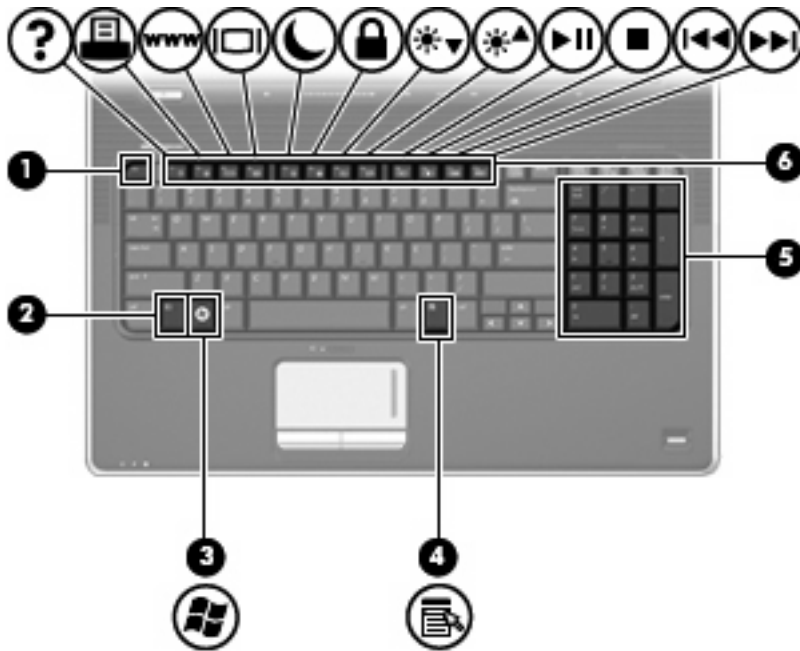


Component	Description
(1) Power button*	<ul style="list-style-type: none"> When the computer is off, press the button to turn on the computer. When the computer is on, press the button briefly to initiate Sleep. When the computer is in the Sleep state, press the button briefly to exit Sleep. When the computer is in Hibernation, press the button briefly to exit Hibernation. <p>If the computer has stopped responding and Windows® shutdown procedures are ineffective, press and hold the power button for at least 5 seconds to turn off the computer.</p> <p>To learn more about your power settings, select Start > Control Panel > System and Security > Power Options.</p>
(2) Speakers (2)	Produce sound.
(3) Volume mute button	Mutes and restores speaker sound.
(4) Volume scroll zone	Adjusts speaker volume. Slide your finger to the left to decrease volume and to the right to increase volume. You can also tap the minus (-) sign on the scroll zone to decrease volume, or tap the plus (+) sign on the scroll zone to increase volume.
(5) Previous/rewind button	<ul style="list-style-type: none"> Plays the previous track or chapter when the button is pressed once. Rewinds media when the button is pressed in combination with the fn key.
(6) Play/pause button	Plays or pauses media.

Component	Description
(7) Next/fast forward button	<ul style="list-style-type: none"> Plays the next track or chapter when the button is pressed once. Fast forwards media when pressed in combination with the fn key.
(8) Stop button	Stops playback.
(9) Wireless button	<p>Turns the wireless feature on or off but does not create a wireless connection.</p> <p>NOTE: To establish a wireless connection, a wireless network must already be set up.</p>
(10) Fingerprint reader (select models only)	Allows a fingerprint logon to Windows, instead of a password logon.

*This table describes factory settings. For information about changing factory settings, refer to the user guides located in Help and Support.

Keys



Component	Description
(1) <code>esc</code> key	Displays system information when pressed in combination with the <code>fn</code> key.
(2) <code>fn</code> key	Executes frequently used system functions when pressed in combination with a function key or the <code>esc</code> key.
(3) Windows logo key	Displays the Windows Start menu.
(4) Windows applications key	Displays a shortcut menu for items beneath the pointer.
(5) Integrated numeric keypad keys	Can be used like the keys on an external numeric keypad.
(6) Function keys	Execute frequently used system functions when pressed in combination with the <code>fn</code> key.

Front components



Component	Description
(1) Power light	<ul style="list-style-type: none"> On: The computer is on. Blinking: The computer is in the Sleep state. Off: The computer is off or in Hibernation.
(2) Battery light	<ul style="list-style-type: none"> On: A battery is charging. Blinking: A battery that is the only available power source has reached a low battery level. When the battery reaches a critical battery level, the battery light begins blinking rapidly. Off: If the computer is plugged into an external power source, the light is turned off when all batteries in the computer are fully charged. If the computer is not plugged into an external power source, the light stays off until the battery reaches a low battery level.
(3) Drive light	<ul style="list-style-type: none"> Blinking: The hard drive or optical drive is being accessed. Amber: HP ProtectSmart Hard Drive Protection has temporarily parked the hard drive.
(4) Consumer infrared lens	Receives a signal from the remote control.
(5) Audio-in (microphone) jack	Connects an optional computer headset microphone, stereo array microphone, or monaural microphone.
(6) Audio-out (headphone) jacks (2)	Produce sound when connected to optional powered stereo speakers, headphones, ear buds, a headset, or television audio.

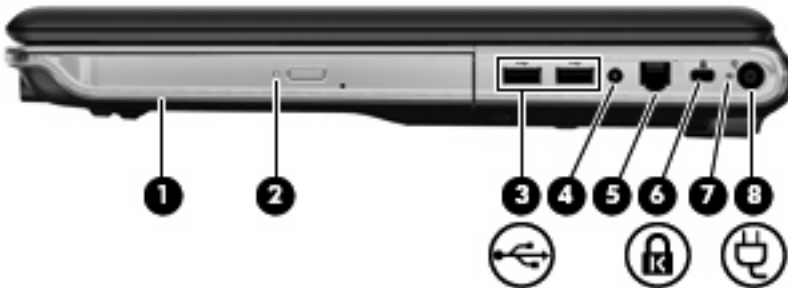
NOTE: This table describes factory settings. For information about changing factory settings, refer to the user guides located in Help and Support.

Rear component



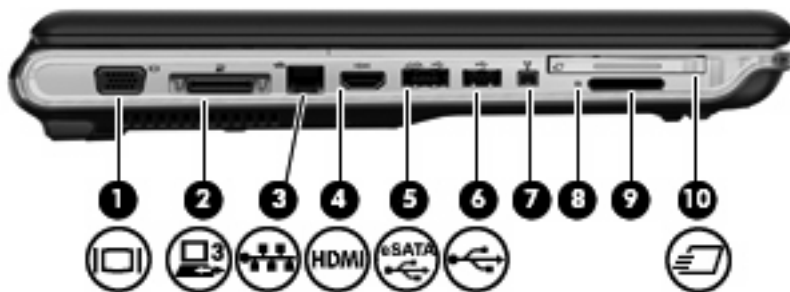
Component	Description
Vent	Enables airflow to cool internal components. NOTE: The computer fan starts up automatically to cool internal components and prevent overheating. It is normal for the internal fan to cycle on and off during routine operation.

Right-side components



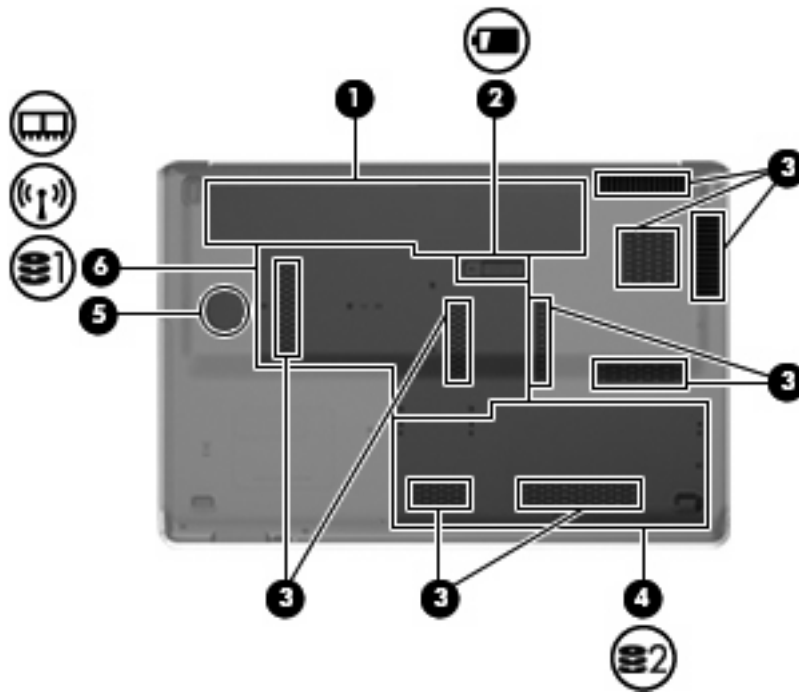
Component	Description
(1) Optical drive	Reads optical discs and, on select models, also writes to optical discs.
(2) Optical drive light	Blinking: The optical drive is being accessed.
(3) USB ports (2)	Connect optional USB devices.
(4) TV antenna/cable jack (select models only)	Connects a TV antenna, a digital cable device, or a satellite device that receives standard or high-definition TV broadcasts.
(5) RJ-11 (modem) jack (select models only)	Connects a modem cable.
(6) Security cable slot	Attaches an optional security cable to the computer. NOTE: The security cable is designed to act as a deterrent, but it may not prevent the computer from being mishandled or stolen.
(7) AC adapter light	<ul style="list-style-type: none">On: The computer is connected to external power.Off: The computer is not connected to external power.
(8) Power connector	Connects an AC adapter.

Left-side components



Component	Description
(1) External monitor port	Connects an external VGA monitor or projector.
(2) Expansion port 3	Connects the computer to an optional docking device or an optional expansion product. NOTE: The computer has only one expansion port. The term <i>expansion port 3</i> describes the type of expansion port.
(3) RJ-45 (network) jack	Connects a network cable.
(4) HDMI port	Connects an optional video or audio device, such as a high-definition television, or any compatible digital or audio component.
(5) eSATA/USB port (select models only)	Connects an optional high-performance eSATA component, such as an eSATA external hard drive, or connects an optional USB device. NOTE: Depending on your computer model, the computer may include a USB port only.
(6) USB port	Connects an optional USB device.
(7) 1394 port (select models only)	Connects an optional IEEE 1394 or 1394a device, such as a camcorder.
(8) Digital Media Slot light	On: A digital card is being accessed.
(9) Digital Media Slot	Supports the following optional digital card formats: <ul style="list-style-type: none"> • Memory Stick (MS) • Memory Stick Pro (MSP) • MultiMediaCard (MMC) • Secure Digital (SD) Memory Card • Secure Digital High Capacity (SDHC) Memory Card • xD-Picture Card (XD) • xD-Picture Card (XD) Type H • xD-Picture Card (XD) Type M
(10) ExpressCard slot	Supports optional ExpressCard/54 cards.

Bottom components



Component	Description
(1) Battery bay	Holds the battery.
(2) Battery release latch	Releases the battery from the battery bay.
(3) Vents (9)	Enable airflow to cool internal components. NOTE: The computer fan starts up automatically to cool internal components and prevent overheating. It is normal for the internal fan to cycle on and off during routine operation.
(4) Secondary hard drive bay	Holds an optional secondary hard drive.
(5) Integrated subwoofer	Contains the subwoofer speaker.
(6) Primary hard drive bay	Holds the primary hard drive, the memory module slots, and the WLAN module (select models only). CAUTION: To prevent an unresponsive system, replace the wireless module only with a wireless module authorized for use in the computer by the governmental agency that regulates wireless devices in your country or region. If you replace the module and then receive a warning message, remove the module to restore computer functionality, and then contact technical support through Help and Support.

Display components




Component	Description
(1) Internal display switch	Turns off the display and initiates Sleep if the display is closed while the power is on.
(2) Internal microphones (2)	Record sound.
(3) Webcam light	On: The webcam is in use.
(4) Webcam	Records audio and video and captures still photographs.

Wireless antennas (select models only)

On select computer models, at least 2 antennas send and receive signals from one or more wireless devices. These antennas are not visible from the outside of the computer.



 **NOTE:** For optimal transmission, keep the areas immediately around the antennas free from obstructions.

To see wireless regulatory notices, refer to the section of the *Regulatory, Safety and Environmental Notices* that applies to your country or region. These notices are located in Help and Support.

Additional hardware components



Component	Description
(1) Power cord*	Connects an AC adapter to an AC outlet.
(2) AC adapter	Converts AC power to DC power.
(3) Battery*	Powers the computer when the computer is not plugged into external power.

*Batteries and power cords vary in appearance by region and country.

3 Labels

The labels affixed to the computer provide information you may need when you troubleshoot system problems or travel internationally with the computer.

- Service tag—Provides important information including the following:



- Product name **(1)**. This is the product name affixed to the front of your notebook.
- Serial number (s/n) **(2)**. This is an alphanumeric identifier that is unique to each product.
- Part number/Product number (p/n) **(3)**. This number provides specific information about the product's hardware components. The part number helps a service technician to determine what components and parts are needed.
- Model description **(4)**. This is the alphanumeric identifier you use to locate documents, drivers, and support for your notebook.
- Warranty period **(5)**. This number describes the duration (in years) of the warranty period for this computer.

Have this information available when you contact technical support. The service tag label is affixed to the bottom of the computer.

- Microsoft® Certificate of Authenticity—Contains the Windows® Product Key. You may need the Product Key to update or troubleshoot the operating system. This certificate is affixed to the bottom of the computer.
- Regulatory label—Provides regulatory information about the computer. The regulatory label is affixed inside the battery bay.
- Modem approval label—Provides regulatory information about the modem and lists the agency approval markings required by some of the countries in which the modem has been approved for use. You may need this information when traveling internationally. The modem approval label is affixed inside the primary hard drive bay.
- Wireless certification label(s) (select models only)—Provide information about optional wireless devices and the approval markings of some of the countries or regions in which the devices have been approved for use. An optional device may be a wireless local area network (WLAN) device or an optional Bluetooth® device. If your computer model includes one or more wireless devices,

one or more certification labels are included with your computer. You may need this information when traveling internationally. Wireless certification labels are affixed inside the primary hard drive bay.

- SIM (subscriber identity module) label (select models only)—Provides the ICCID (Integrated Circuit Card Identifier) of your SIM. This label is located inside the battery bay.
- HP Mobile Broadband Module serial number label (select models only)—Provides the serial number of your HP Mobile Broadband Module. This label is located inside the battery bay.

Index

Symbols/Numerics

1394 port, identifying 10

A

AC adapter, identifying 14
antennas 13
applications key, Windows 7
audio-in (microphone) jack,
identifying 8
audio-out (headphone) jack,
identifying 8

B

battery bay 15
battery bay, identifying 11
battery light, identifying 4, 8
battery release latch,
identifying 11
battery, identifying 14
bays
 battery 11, 15
 primary hard drive 11
 secondary hard drive 11
Bluetooth label 16
buttons
 next/fast forward 6
 play/pause 5
 power 5
 previous/rewind 5
 stop 6
 TouchPad 2
 TouchPad on/off 2
 volume mute 5
 wireless 6

C

caps lock light, identifying 3
Certificate of Authenticity label 15
compartments
 memory module 11

components
 additional hardware 14
 bottom 11
 display 12
 front 8
 left-side 10
 rear 9
 right-side 9
 top 2
connectors, power 9
cord, power 14

D

Digital Media Slot light,
identifying 10
Digital Media Slot, identifying 10
drive light, identifying 4, 8

E

eSATA/USB port, identifying 10
esc key, identifying 7
expansion port, identifying 10
ExpressCard slot, identifying 10
external monitor port,
identifying 10

F

fingerprint reader, identifying 6
fn key, identifying 7
function keys, identifying 7

H

HDMI port, identifying 10
headphone (audio-out) jack 8
HP Mobile Broadband Module
 serial number label 16

I

IEEE 1394 port, identifying 10
infrared lens, identifying 8

integrated webcam light,
identifying 12
internal microphones,
identifying 12

J

jacks
 audio-in (microphone) 8
 audio-out (headphone) 8
 RJ-11 (modem) 9
 RJ-45 (network) 10
 TV antenna/cable 9

K

keypad keys, identifying 7
keys
 esc 7
 fn 7
 function 7
 keypad 7
 Windows applications 7
 Windows logo 7

L

labels
 Bluetooth 16
 HP Mobile Broadband
 Module 16
 Microsoft Certificate of
 Authenticity 15
 modem approval 15
 regulatory 15
 service tag 15
 SIM 16
 wireless certification 16
 WLAN 16
latch
 battery release 11
lights
 battery 4, 8

- caps lock 3
- Digital Media Slot 10
- drive 4, 8
- mute 3
- num lock 3
- power 3, 8
- TouchPad 2
- volume down 3
- volume mute 3
- volume up 3
- webcam 12
- wireless 3

M

- media activity buttons, identifying 5
- memory module compartment, identifying 11
- microphone (audio-in) jack 8
- Microsoft Certificate of Authenticity label 15
- modem approval label 15
- monitor port, external 10
- mute button, identifying 5
- mute light, identifying 3

N

- next/fast forward button, identifying 6
- num lock light, identifying 3

O

- operating system
 - Microsoft Certificate of Authenticity label 15
 - Product Key 15
- optical drive, identifying 9

P

- play/pause button, identifying 5
- ports
 - 1394 10
 - eSATA/USB 10
 - expansion 10
 - external monitor 10
 - HDMI 10
 - USB 9, 10
- power button, identifying 5
- power connector, identifying 9
- power cord, identifying 14
- power light, identifying 8

- power lights, identifying 3
- previous/rewind button, identifying 5
- primary hard drive bay, identifying 11
- Product Key 15
- product name and number, computer 15

R

- regulatory information
 - modem approval label 15
 - regulatory label 15
 - wireless certification labels 16
- RJ-11 (modem) jack, identifying 9
- RJ-45 (network) jack, identifying 10

S

- scrolling regions, TouchPad 2
- secondary hard drive bay, identifying 11
- security cable slot, identifying 9
- serial number, computer 15
- service tag 15
- SIM label 16
- slots
 - Digital Media 10
 - ExpressCard 10
 - security cable 9
- speakers, identifying 5
- stop button, identifying 6

T

- TouchPad
 - buttons 2
 - identifying 2
 - scrolling regions 2
- TouchPad light, identifying 2
- TouchPad on/off button 2
- traveling with the computer
 - modem approval label 15
 - wireless certification labels 16
- TV antenna/cable jack, identifying 9

U

- USB ports, identifying 9, 10

V

- vents, identifying 9, 11
- volume down light, identifying 3
- volume mute button, identifying 5
- volume mute light, identifying 3
- volume scroll zone, identifying 5
- volume up light, identifying 3

W

- webcam, identifying 12
- Windows applications key, identifying 7
- Windows logo key, identifying 7
- wireless antennas 13
- wireless button, identifying 6
- wireless certification label 16
- wireless light, identifying 3
- WLAN device 16
- WLAN label 16
- WLAN module 11

