



LaserJet Pro M304-M305, M404-M405



www.hp.com/support/ljM304
www.hp.com/support/ljM404

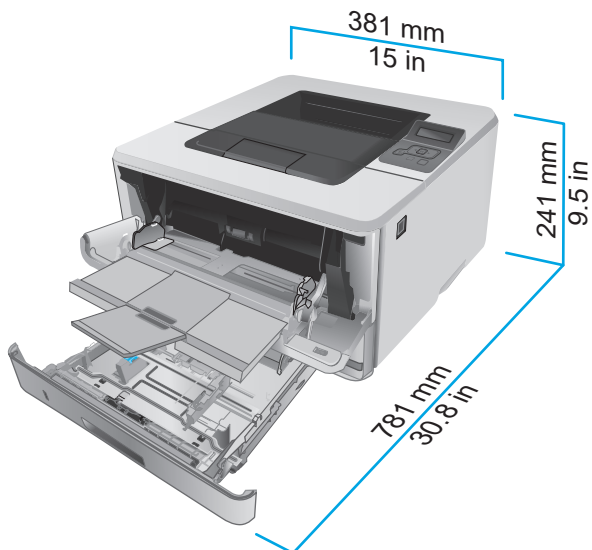
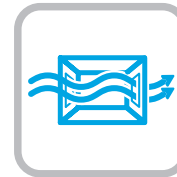
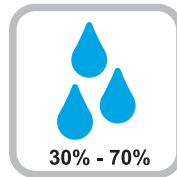
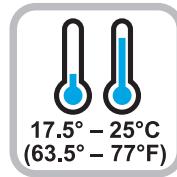
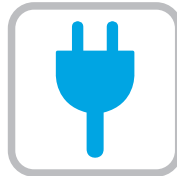
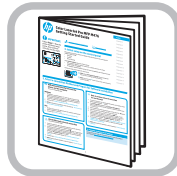
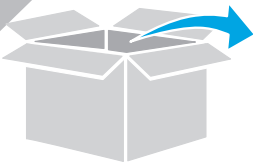


www.register.hp.com



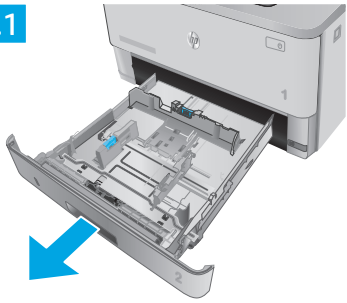
W1A52-90922

© Copyright 2018 HP Development Company, L.P.
www.hp.com

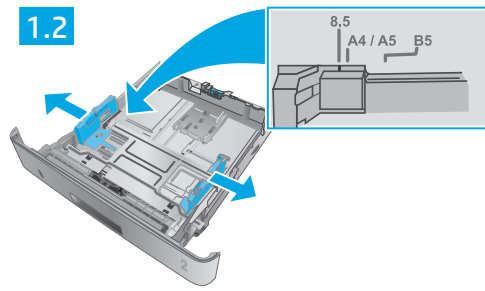


1

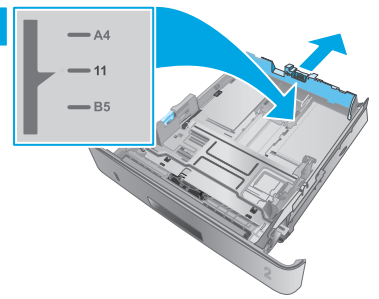
1.1



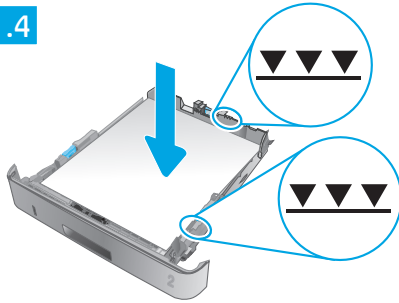
1.2



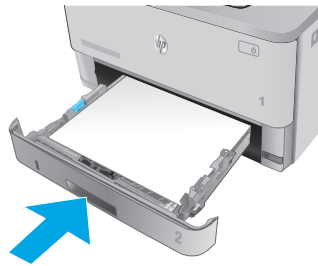
1.3



1.4

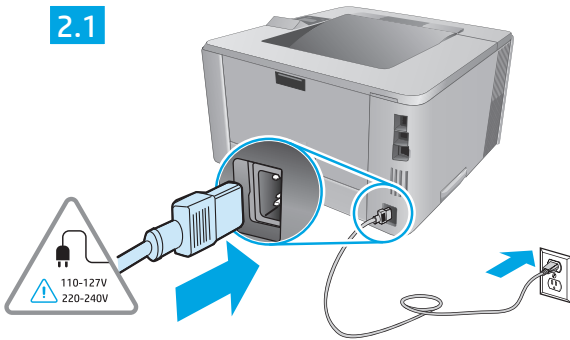


1.5

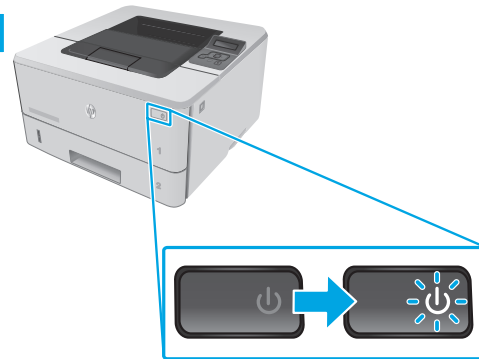


2

2.1



2.2



EN CAUTION: To prevent damage to the printer, use only the power cord that is provided with the printer.

ID PERHATIAN: Untuk mencegah kerusakan printer, gunakan hanya kabel daya yang disertakan bersama printer.

KO 주의: 프린터의 손상을 방지하려면 프린터와 함께 제공된 전원 코드만 사용하십시오.

TH ข้อควรระวัง: เพื่อป้องกันไม่ให้เกิดความเสียหายต่อเครื่องพิมพ์ โปรดใช้สายไฟที่มาพร้อมกับเครื่องพิมพ์เท่านั้น

ZHTW 注意: 為了避免對印表機造成損害，請僅使用印表機隨附的電源線。

VI CHÚ Ý: Để tránh làm hỏng máy in, chỉ sử dụng dây điện đi kèm máy in.



LaserJet Pro M304-M305, M404-M405 Getting Started Guide

English.....3

Bahasa Indonesia.....5

한국어7

ไทย9

繁體中文..... 11

Tiếng Việt 13

NOTE: Internet connection is required to set up the printer and download the software driver.

FAQ

For frequently asked questions, go to www.hp.com/support/ljM404FAQ or scan the QR code.



3. Initial setup on the control panel

After turning on the printer, wait for it to initialize. To navigate the control panel, use arrow and **OK** button. Follow the prompts on the control panel to configure these settings:

- Language
- Location
- Printer Setup Environment

Select one of these options:

- **Self-managed:** Optimized default settings for most users that include guided setup and configuration steps and automatic updates.
- **IT-managed:** Optimized default settings for fleet manageability.

Settings are fully customizable after initial setup.

4. Download and install the software

NOTE: Do not connect the USB cable until you are prompted to do so.

Method 1: Download HP Easy Start (Windows and Mac OS)

1. Go to 123.hp.com/laserjet, and click **Download**.
2. Follow the onscreen instructions and then prompts to save the file to the computer.
3. Launch the software file from the folder where you saved the file.
4. Follow the onscreen instructions to install the software.
5. When prompted to select a connection type, select the appropriate option for the type of connection.

Method 2: Download from printer support website (Windows and Mac OS)

1. Go to www.hp.com/support/ljM304 or www.hp.com/support/ljM404.
2. Select **Software and Drivers**.
3. Download the software for your printer model and operating system.
4. Launch the software file from the folder where the file was saved.
5. Follow the onscreen instructions to install the software.
6. When prompted to select a connection type, select the appropriate option for the type of connection.

Tips: Connect the printer to a wireless network using the HP Smart app (wireless models only) (iOS only)

1. Disconnect the Ethernet cable and USB cable from your printer.
2. From the printer control panel, select **Setup > Network setup > Restore Network Setting** to reset the printer network. Then the Wireless light begins blinking.
3. Follow the steps in “5. Mobile Printing” Method 1 to install the HP Smart app.
4. Turn on Bluetooth on your mobile device.
5. Run the HP Smart app. Follow the onscreen instructions to select the name of your printer (e.g., “HP LaserJet XXXX”) and connect it to your wireless network.
6. After the printer connects to the wireless network successfully, the Wireless light stops blinking and stays on.

Manually configure the IP address

See the printer user guide for information about configuring the IP address manually. For more information, go to www.hp.com/support/ljM304 or www.hp.com/support/ljM404.

5. Mobile printing (Optional)

Method 1: HP Smart

Use the HP Smart app to set up, print, and more.

1. Scan the QR code or go to 123.hp.com.
2. Install the HP Smart app.
3. Run the HP Smart app and follow the onscreen instructions to connect, set up, print, and more.



Method 2: Wi-Fi Direct (wireless models only)

Wi-Fi Direct allows Wi-Fi capable devices, such as smart phones, tablets, or computers, to make a wireless network connection directly to the printer without using a wireless router or access point. Connect to the printer's Wi-Fi Direct signal the same way Wi-Fi capable devices are connected to a new wireless network or hotspot.

Enable Wi-Fi Direct

1. On the printer control panel, press the **OK** button to display the **Home** screen.
2. Use arrow buttons and the **OK** button to open the following menus:
 - **Setup**
 - **Wi-Fi direct**
 - **Wi-Fi direct status**
3. Use arrow buttons to navigate to **ON** or **OFF**, and press the **OK** button to enable or disable the Wi-Fi Direct feature.

Discover the printer

1. From the mobile device, turn on Wi-Fi, and search for wireless networks.
2. Select the printer name as it appears on the printer control panel.

 For more information on wireless printing and wireless setup, go to www.hp.com/go/wirelessprinting.

Learn more about mobile printing

The product supports AirPrint and Wi-Fi Direct. For more mobile printing information, scan the QR code or go to www.hp.com/go/LaserJetMobilePrinting.



Troubleshooting

User Guide

The User Guide includes printer usage and troubleshooting information. It is available on the Web:

1. Go to www.hp.com/support/ljM304 or www.hp.com/support/ljM404.
2. If prompted, select the printer, and then click **User Guides**.

Check for firmware updates

1. Go to www.hp.com/support/ljM304 or www.hp.com/support/ljM404.
2. If prompted, select the printer, and then click **Software and Drivers**.
3. Select the operating system, and click the **Next** button.
4. Select **Firmware**, and click the **Download** button.

Additional support resources

For HP's all-inclusive help for the printer, go to www.hp.com/support/ljM304 or www.hp.com/support/ljM404.

- Solve problems
- Find advanced configuration instructions
- Download software updates
- Join support forums
- Find warranty and regulatory information
- Access mobile printing resources

To learn more about the printer, please go to www.hp.com/support/ljM404FAQ or scan the QR code.





LaserJet Pro M304-M305, M404-M405

Panduan Persiapan

English.....3

Bahasa Indonesia.....5

한국어.....7

ไทย.....9

繁體中文..... 11

Tiếng Việt..... 13

CATATAN: Diperlukan koneksi internet untuk menyiapkan printer dan mendownload driver perangkat lunak.

i Pertanyaan Umum

Untuk pertanyaan umum, kunjungi www.hp.com/support/ljM404FAQ atau pindai kode QR.



3. Konfigurasi awal pada panel kontrol

Setelah menghidupkan printer, tunggu proses inialisasi. Untuk menavigasikan panel kontrol, gunakan tombol panah dan tombol **OK**. Ikuti perintah pada panel kontrol untuk mengonfigurasi pengaturan berikut:

- Bahasa
- Lokasi
- Lingkungan Penyiapan Printer

Pilih salah satu opsi ini:

- **Dikelola sendiri:** Pengaturan default yang dioptimalkan untuk sebagian besar pengguna mencakup langkah-langkah pengaturan dan konfigurasi terpandu, serta pembaruan otomatis.
- **Dikelola TI:** Pengaturan default yang dioptimalkan untuk kemampuan pengelolaan cepat.

Pengaturan dapat disesuaikan sepenuhnya setelah konfigurasi awal.

4. Mendownload dan menginstal perangkat lunak

CATATAN: Jangan sambungkan kabel USB hingga diminta untuk melakukannya.

i Metode 1: Download HP Easy Start (Windows dan Mac OS)

1. Kunjungi 123.hp.com/laserjet, dan klik **Download**.
2. Ikuti instruksi di layar dan perintah untuk menyimpan file di komputer.
3. Jalankan file perangkat lunak dari folder tempat menyimpan file.
4. Ikuti petunjuk di layar untuk menginstal perangkat lunak.
5. Bila diminta untuk memilih jenis sambungan, gunakan pilihan yang tepat untuk jenis sambungan.

i Metode 2: Download dari situs web dukungan printer (Windows dan Mac OS)

1. Kunjungi www.hp.com/support/ljM304 atau www.hp.com/support/ljM404.
2. Pilih **Software and Drivers** (Perangkat Lunak dan Driver).
3. Download perangkat lunak untuk model printer dan sistem operasi Anda.
4. Jalankan file perangkat lunak dari folder tempat menyimpan file.
5. Ikuti petunjuk di layar untuk menginstal perangkat lunak.
6. Bila diminta untuk memilih jenis sambungan, gunakan pilihan yang tepat untuk jenis sambungan.

Tips: Menyambungkan printer ke jaringan nirkabel menggunakan aplikasi HP Smart (hanya model nirkabel) (hanya iOS)

1. Putuskan sambungan kabel Ethernet dan kabel USB dari printer.
2. Dari panel kontrol printer, pilih **Setup > Network setup > Restore Network Setting** (Pengaturan > Pengaturan jaringan > Pulihkan Pengaturan Jaringan). Lalu Lampu nirkabel mulai berkedip.
3. Ikuti langkah di "5. Pencetakan Seluler" Metode 1 untuk menginstal aplikasi HP Smart.
4. Aktifkan Bluetooth di perangkat selular.
5. Instal aplikasi HP Smart. Ikuti instruksi di layar untuk memilih nama printer (mis., "HP LaserJet XXXX") dan sambungkan ke jaringan nirkabel.
6. Setelah printer berhasil tersambung ke jaringan nirkabel, Lampu nirkabel berhenti berkedip dan terus menyala.

i Mengonfigurasi alamat IP secara manual

Lihat panduan pengguna printer untuk informasi tentang mengonfigurasi alamat IP secara manual. Untuk informasi lebih lanjut, kunjungi www.hp.com/support/ljM304 atau www.hp.com/support/ljM404.

5. Pencetakan seluler (Opsional)

Metode 1: HP Smart

Gunakan aplikasi HP Smart untuk mengonfigurasi, mencetak, dan lainnya.

1. Pindai kode QR atau kunjungi 123.hp.com.
2. Instal aplikasi HP Smart.
3. Jalankan aplikasi HP Smart dan ikuti petunjuk di layar untuk menyambungkan, mengonfigurasi, mencetak, dan lainnya.



Metode 2: Wi-Fi Direct (hanya model nirkabel)

Wi-Fi Direct memungkinkan perangkat yang mendukung Wi-Fi, misalnya smartphone, tablet, atau komputer, membuat sambungan jaringan nirkabel langsung ke printer tanpa menggunakan router atau jalur akses nirkabel. Sambungkan ke sinyal Wi-Fi Direct printer menggunakan cara yang sama seperti menyambungkan perangkat yang mendukung Wi-Fi ke jaringan nirkabel atau hotspot baru.

Mengaktifkan Wi-Fi Direct

1. Di panel kontrol printer, tekan tombol **OK** untuk menampilkan layar **Home** (Awal).
2. Gunakan tombol panah dan tombol **OK** untuk membuka menu berikut:
 - Pengaturan
 - Wi-Fi direct
 - Status Wi-Fi direct
3. Gunakan tombol panah untuk menavigasi ke **ON** atau **OFF**, dan tekan tombol **OK** untuk mengaktifkan atau menonaktifkan fitur Wi-Fi Direct.

Menemukan printer

1. Dari perangkat seluler, aktifkan Wi-Fi, lalu cari jaringan nirkabel.
2. Pilih nama printer yang ditunjukkan pada panel kontrol printer.

 Untuk informasi lebih lanjut tentang pencetakan dan konfigurasi nirkabel, kunjungi www.hp.com/go/wirelessprinting.

Selengkapnya tentang pencetakan seluler

Produk ini mendukung AirPrint dan Wi-Fi Direct. Untuk informasi lebih lanjut tentang pencetakan seluler, pindai kode QR atau kunjungi www.hp.com/go/LaserJetMobilePrinting.



Mengatasi masalah

Panduan Pengguna

Panduan Pengguna mencakup informasi tentang penggunaan dan cara mengatasi masalah printer. Informasi ini tersedia di Web:

1. Kunjungi www.hp.com/support/ljM304 atau www.hp.com/support/ljM404.
2. Jika diminta, pilih printer, lalu klik **User Guides** (Panduan Pengguna).

Memeriksa pembaruan firmware

1. Kunjungi www.hp.com/support/ljM304 atau www.hp.com/support/ljM404.
2. Jika diminta, pilih printer, lalu klik **Software and Drivers** (Perangkat Lunak dan Driver).
3. Pilih sistem operasi, lalu klik tombol **Next** (Berikutnya).
4. Pilih **Firmware**, lalu klik tombol **Download**.

Sumber dukungan tambahan

Untuk bantuan lengkap tentang printer dari HP, kunjungi www.hp.com/support/ljM304 atau www.hp.com/support/ljM404.

- Mengatasi masalah
- Menemukan petunjuk konfigurasi tingkat lanjut
- Mendownload pembaruan perangkat lunak
- Mengikuti forum dukungan
- Mencari informasi jaminan dan peraturan
- Mengakses sumber pencetakan seluler

Untuk mengetahui lebih lanjut tentang printer, kunjungi www.hp.com/support/ljM404FAQ atau pindai kode QR.





LaserJet Pro M304-M305, M404-M405 시작 설명서

English.....3

Bahasa Indonesia.....5

한국어.....7

ไทย.....9

繁體中文.....11

Tiếng Việt.....13

참고: 프린터를 설치하고 소프트웨어 드라이버를 다운로드하려면 인터넷을 연결해야 합니다.

FAQ

자주 묻는 질문은 www.hp.com/support/ljM404FAQ에서 확인하거나 QR 코드를 스캔하십시오.



3. 제어판에서 초기 설정

프린터를 켜 후 초기화될 때까지 기다립니다. 제어판에서 화살표 버튼과 **확인** 버튼을 사용하여 이동합니다. 제어판에 표시되는 메시지에 따라 다음과 같은 설정을 구성합니다.

- 언어
- 위치
- 프린터 설치 환경

다음 옵션 중 하나를 선택합니다.

- **자가 관리:** 설정 안내와 구성 단계 및 자동 업데이트를 포함하여 대부분의 사용자에게 최적화된 기본 설정입니다.
- **IT 관리:** 장비 관리성에 최적화된 기본 설정입니다.

설정 은 초기 설정 후 모두 사용자 요구에 맞게 설정할 수 있습니다.

4. 소프트웨어 다운로드 및 설치

참고: 알림이 표시되기 전까지는 USB 케이블을 연결하지 마십시오.

방법 1: HP Easy Start 다운로드(Windows 및 Mac OS)

1. 123.hp.com/laserjet으로 이동한 다음 **다운로드**를 클릭합니다.
2. 화면의 안내와 알림에 따라 컴퓨터에 파일을 저장합니다.
3. 파일을 저장한 폴더에서 소프트웨어 파일을 실행합니다.
4. 화면의 지시에 따라 소프트웨어를 설치합니다.
5. 연결 유형을 선택하라는 메시지가 표시되면 연결 유형에 적합한 옵션을 선택합니다.

방법 2: 프린터 지원 웹사이트에서 다운로드(Windows 및 Mac OS)

1. www.hp.com/support/ljM304 또는 www.hp.com/support/ljM404로 이동합니다.
2. **소프트웨어 및 드라이버**를 선택합니다.
3. 해당 프린터 모델 및 운영 체제용 소프트웨어를 다운로드합니다.
4. 파일이 저장된 폴더에서 소프트웨어 파일을 실행합니다.
5. 화면의 지시에 따라 소프트웨어를 설치합니다.
6. 연결 유형을 선택하라는 메시지가 표시되면 연결 유형에 적합한 옵션을 선택합니다.

팁 (i) HP Smart 앱(무선 모델만 해당)을 사용하여 프린터를 무선 네트워크에 연결합니다(iOS만 해당)

1. 프린터에서 이더넷 케이블과 USB 케이블을 분리합니다.
2. 프린터 제어판에서 **설치>네트워크 설치>네트워크 설정 복원**을 선택하여 프린터 네트워크를 재설정합니다. 그런 다음 무선 표시등이 깜박이기 시작합니다.
3. “5. 모바일 인쇄” 방법 1의 단계를 따라 HP Smart 앱을 설치합니다.
4. 모바일 장치에서 Bluetooth를 켭니다.
5. HP Smart 앱을 실행합니다. 화면의 안내에 따라 프린터의 이름(예, “HP LaserJet XXXX”)을 선택한 다음 무선 네트워크에 연결합니다.
6. 프린터를 무선 네트워크에 연결하면, 무선 표시등의 깜박임이 중지되고 켜진 상태가 됩니다.

IP 주소 수동으로 구성

수동 IP 주소 구성에 대한 자세한 내용은 프린터 사용 설명서를 참조하십시오. 자세한 내용은 www.hp.com/support/ljM304 또는 www.hp.com/support/ljM404에서 확인할 수 있습니다.

5. 모바일 인쇄(선택 사항)

방법 1: HP Smart

HP Smart 앱을 사용하여 연결, 설정 및 인쇄 등을 실시합니다.

1. QR 코드를 스캔하거나 123.hp.com으로 이동합니다.
2. HP Smart 앱을 설치합니다.
3. HP Smart 앱을 실행하여 화면에 표시되는 안내에 따라 연결, 설정 및 인쇄 등을 실시합니다.



방법 2: Wi-Fi Direct(무선 모델만 해당)

Wi-Fi Direct를 통해 스마트폰, 태블릿, 컴퓨터와 같은 Wi-Fi 케이블 장치를 무선 라우터나 액세스 지점을 사용하지 않고 직접 프린터에 무선 네트워크 연결을 할 수 있습니다. Wi-Fi를 사용할 수 있는 장치를 새 무선 네트워크 또는 핫스팟에 연결하는 방식과 동일한 방법으로 프린터의 Wi-Fi Direct 신호에 연결합니다.

Wi-Fi Direct 활성화

1. 제어판에서 **OK** 버튼을 눌러 **홈** 화면을 엽니다.
2. 화살표 버튼 및 **OK** 버튼을 사용하여 다음 메뉴를 엽니다.
 - 설정
 - Wi-Fi Direct
 - Wi-Fi direct 상태
3. 화살표 버튼을 눌러 **켜짐** 또는 **꺼짐**으로 이동하여 **확인** 버튼을 눌러 Wi-Fi Direct 기능을 사용하거나 사용하지 않습니다.

프린터 찾기

1. 모바일 장치에서 Wi-Fi를 켜고 무선 네트워크를 검색합니다.
2. 프린터 제어판에 표시되는 프린터 이름을 선택합니다.

❗ 무선 인쇄 및 무선 설정에 대한 자세한 내용은 www.hp.com/go/wirelessprinting으로 이동합니다.

❗ 모바일 인쇄에 대해 자세히 알아보기

제품은 AirPrint 및 Wi-Fi Direct를 지원합니다. 추가 모바일 인쇄 정보는 QR 코드를 스캔하거나 www.hp.com/go/LaserJetMobilePrinting으로 이동합니다.



문제 해결

사용 설명서

사용 설명서에 프린터 사용법 및 문제 해결 정보가 포함되어 있습니다. 웹에서 사용할 수 있습니다:

1. www.hp.com/support/ljM304 또는 www.hp.com/support/ljM404로 이동합니다.
2. 프롬프트되면, 프린터를 선택한 다음 **사용 설명서**를 클릭합니다.

펌웨어 업데이트 확인

1. www.hp.com/support/ljM304 또는 www.hp.com/support/ljM404로 이동합니다.
2. 프롬프트되면, 프린터를 선택한 다음 **소프트웨어 및 드라이버**를 클릭합니다.
3. 운영 체제를 선택하고 **다음** 버튼을 클릭합니다.
4. **펌웨어**를 선택하고 **다운로드** 버튼을 클릭합니다.

추가 지원 리소스

프린터에 대한 모든 것을 포함하는 HP 도움말은 www.hp.com/support/ljM304 또는 www.hp.com/support/ljM404으로 이동합니다.

- 문제 해결
- 고급 구성 지침 찾기
- 소프트웨어 업데이트 다운로드
- 지원 포럼 가입
- 보증 및 규정 정보 찾기
- 모바일 인쇄 리소스 액세스

프린터에 대한 자세한 내용을 알아보려면, www.hp.com/support/ljM404FAQ 또는 QR 코드를 스캔합니다.





LaserJet Pro M304-M305, M404-M405

คู่มือเริ่มต้นใช้งาน

English.....3

Bahasa Indonesia.....5

한국어7

ไทย9

繁體中文..... 11

Tiếng Việt 13

หมายเหตุ: การตั้งค่าเครื่องพิมพ์และการดาวน์โหลดซอฟต์แวร์ไดรเวอร์ต้องใช้การเชื่อมต่ออินเทอร์เน็ต

❗ คำถามที่พบบ่อย

หากต้องการดูคำถามที่พบบ่อย ให้ไปที่ www.hp.com/support/ljm404FAQ หรือสแกนรหัส QR นี้



3. การตั้งค่าครั้งแรกบนแผงควบคุม

หลังจากเปิดเครื่องพิมพ์แล้ว ให้รอจนกว่าระบบจะเริ่มขึ้น ในการนำทางบนแผงควบคุม ให้ใช้ปุ่มลูกศรควบคุมปุ่ม OK ดำเนินการตามพรอมต์บนแผงควบคุมเพื่อกำหนดการตั้งค่าดังต่อไปนี้

- ภาษา
- ตำแหน่ง
- สภาพแวดล้อมการตั้งค่าเครื่องพิมพ์

เลือกหนึ่งในตัวเลือกต่อไปนี้

- **จัดการด้วยตนเอง:** การตั้งค่าเริ่มต้นที่มีประสิทธิภาพสำหรับผู้ใช้งานส่วนใหญ่ โดยมีขั้นตอนการตั้งค่าและการกำหนดค่าแบบมีคำแนะนำ และการอัปเดตอัตโนมัติ
- **จัดการโดย IT:** การตั้งค่าเริ่มต้นที่ปรับให้เหมาะสม เพื่อความสามารถทางการจัดการที่รวดเร็ว

สามารถปรับแต่งการตั้งค่าทั้งหมดได้ หลังการตั้งค่าในครั้งแรกแล้ว

4. ดาวน์โหลดและติดตั้งซอฟต์แวร์

หมายเหตุ: อย่าเพิ่งต่อสาย USB จนกว่าโปรแกรมการติดตั้งจะพร้อมให้ต่อ

วิธีที่ 1: ดาวน์โหลด HP Easy Start (Windows และ Mac OS)

1. ไปที่ 123.hp.com/laserjet และคลิก **Download** (ดาวน์โหลด)
2. ทำตามคำแนะนำบนหน้าจอและพรอมต์ เพื่อบันทึกไฟล์ในคอมพิวเตอร์
3. เปิดไฟล์ซอฟต์แวร์จากโฟลเดอร์ที่บันทึกไฟล์ไว้
4. ทำตามคำแนะนำบนหน้าจอเพื่อติดตั้งซอฟต์แวร์
5. เมื่อพรอมต์ให้เลือกประเภทของการเชื่อมต่อ โปรดเลือกตัวเลือกที่เหมาะสมสำหรับประเภทของการเชื่อมต่อ

วิธีที่ 2: ดาวน์โหลดจากเว็บไซต์การสนับสนุนเครื่องพิมพ์ (Windows และ Mac OS)

1. ไปที่ www.hp.com/support/ljm304 หรือ www.hp.com/support/ljm404
2. เลือก **Software and Drivers** (ซอฟต์แวร์และไดรเวอร์)
3. ดาวน์โหลดซอฟต์แวร์สำหรับรุ่นเครื่องพิมพ์และระบบปฏิบัติการของคุณ
4. เปิดไฟล์ซอฟต์แวร์จากโฟลเดอร์ที่บันทึกไฟล์ไว้
5. ทำตามคำแนะนำบนหน้าจอเพื่อติดตั้งซอฟต์แวร์
6. เมื่อพรอมต์ให้เลือกประเภทของการเชื่อมต่อ โปรดเลือกตัวเลือกที่เหมาะสมสำหรับประเภทของการเชื่อมต่อ

คำแนะนำ: (i) ต่อเครื่องพิมพ์เข้ากับเครือข่ายไร้สายโดยใช้แอป HP Smart (รุ่นไร้สายเท่านั้น) (iOS เท่านั้น)

1. ถอดสายอินเทอร์เน็ตและสาย USB จากเครื่องพิมพ์
2. บนแผงควบคุมเครื่องพิมพ์ ให้เลือก การตั้งค่า > การตั้งค่า เครือข่าย > เรียกคืนการตั้งค่าเครือข่าย เพื่อรีเซ็ตเครือข่ายเครื่องพิมพ์ จากนั้นไฟไร้สายจะเริ่มกะพริบ
3. ทำตามขั้นตอนในวิธีที่ 1 ของ “5. การพิมพ์ผ่านอุปกรณ์ไร้สาย” เพื่อติดตั้งแอป HP Smart
4. เปิดบลูทูธในอุปกรณ์เคลื่อนที่
5. เรียกใช้แอป HP Smart ทำตามคำแนะนำบนหน้าจอเพื่อเลือกชื่อเครื่องพิมพ์ (เช่น “HP LaserJet XXXX”) และเชื่อมต่อเครื่องพิมพ์นั้นเข้ากับเครือข่ายไร้สาย
6. หลังจากเครื่องพิมพ์นั้นเชื่อมต่อกับเครือข่ายไร้สายเรียบร้อยแล้ว ไฟไร้สายจะหยุดกะพริบและติดสว่าง

❗ กำหนดค่า IP แอดเดรสด้วยตนเอง

ดูคู่มือผู้ใช้เครื่องพิมพ์ เพื่อศึกษาข้อมูลเกี่ยวกับวิธีกำหนดค่า IP แอดเดรสด้วยตนเอง โปรดดูข้อมูลเพิ่มเติมที่ www.hp.com/support/ljm304 หรือ www.hp.com/support/ljm404

5. การพิมพ์ผ่านอุปกรณ์เคลื่อนที่ (ไม่จำเป็น)

วิธีที่ 1: HP Smart

ใช้แอป HP Smart เพื่อตั้งค่า พิมพ์ และอื่นๆ

1. สแกนรหัส QR นี้หรือไปที่ 123.hp.com
2. ติดตั้งแอป HP Smart
3. เรียกใช้แอป HP Smart และทำตามคำแนะนำบนหน้าจอ เพื่อเชื่อมต่อ ตั้งค่า พิมพ์ และอื่นๆ



วิธีที่ 2: Wi-Fi Direct (รุ่นไร้สายเท่านั้น)

Wi-Fi Direct อนุญาตให้อุปกรณ์ที่ใช้งาน Wi-Fi ได้ อาทิเช่น สมาร์ทโฟน แท็บเล็ต หรือคอมพิวเตอร์ เชื่อมต่อกับเครื่องพิมพ์ผ่านเครือข่ายไร้สายได้โดยตรง โดยไม่ต้องใช้เราเตอร์หรือจุดเข้าใช้งานไร้สาย โดยวิธีการเชื่อมต่อกับสัญญาณ Wi-Fi Direct ของเครื่องพิมพ์จะเหมือนกับวิธีการเชื่อมต่ออุปกรณ์ที่ใช้ Wi-Fi ได้กับเครือข่ายไร้สายหรือฮอตสปอตใหม่ทั่วไป

เปิดใช้งาน Wi-Fi Direct

1. บนแผงควบคุมของเครื่องพิมพ์ ให้กดปุ่ม **OK** เพื่อแสดงหน้าจอ **หลัก**
2. ใช้ปุ่มลูกศรและปุ่ม **OK** เพื่อเปิดเมนูต่อไปนี้
 - การตั้งค่า
 - Wi-Fi Direct
 - สถานะ Wi-Fi Direct
3. ใช้ปุ่มลูกศรเพื่อไปยัง **เปิด** หรือ **ปิด** และกดปุ่ม **OK** เพื่อเปิดใช้หรือปิดใช้คุณสมบัติ Wi-Fi Direct

ค้นหาเครื่องพิมพ์

1. เปิด Wi-Fi ในอุปกรณ์เคลื่อนที่ และค้นหาเครือข่ายไร้สาย
2. เลือกชื่อเครื่องพิมพ์ตามที่แสดงบนแผงควบคุมเครื่องพิมพ์

i หากต้องการข้อมูลเพิ่มเติมเกี่ยวกับการพิมพ์แบบไร้สายและการตั้งค่าระบบไร้สาย ให้ไปที่ www.hp.com/go/wirelessprinting

i ศึกษาเพิ่มเติมเกี่ยวกับการพิมพ์ผ่านอุปกรณ์เคลื่อนที่

เครื่องพิมพ์นี้สนับสนุน AirPrint และ Wi-Fi Direct หากต้องการข้อมูลเพิ่มเติมด้านการพิมพ์ผ่านอุปกรณ์เคลื่อนที่ ให้สแกนรหัส QR นี้หรือไปที่ www.hp.com/go/laserjetmobileprinting



การแก้ไขปัญหา

คู่มือผู้ใช้

ในคู่มือผู้ใช้จะมีข้อมูลการใช้เครื่องพิมพ์และการแก้ไขปัญหาเบื้องต้น ซึ่งหาได้จากในเว็บต่อไปนี้

1. ไปที่ www.hp.com/support/ljm304 หรือ www.hp.com/support/ljm404
2. หากมีการพรมต ให้เลือกเครื่องพิมพ์แล้วคลิก **User Guides** (คู่มือผู้ใช้)

ตรวจสอบอัปเดตเฟิร์มแวร์

1. ไปที่ www.hp.com/support/ljm304 หรือ www.hp.com/support/ljm404
2. หากมีการพรมต ให้เลือกเครื่องพิมพ์แล้วคลิก **Software and Drivers** (ซอฟต์แวร์และไดรเวอร์)
3. เลือกระบบปฏิบัติการ และคลิกปุ่ม **Next** (ถัดไป)
4. เลือก **Firmware** (เฟิร์มแวร์) และคลิกปุ่ม **Download** (ดาวน์โหลด)

ทรัพยากรการสนับสนุนเพิ่มเติม

หากต้องการข้อมูลวิธีใช้เครื่องพิมพ์ HP ที่ครอบคลุมทุกหัวข้อ ให้ไปที่ www.hp.com/support/ljm304 หรือ www.hp.com/support/ljm404 เพื่อ

- แก้ปัญหา
- ค้นหาคำแนะนำด้านการกำหนดค่าขั้นสูง
- ดาวนโหลดอัปเดตซอฟต์แวร์
- เข้าร่วมฟอรัมการสนับสนุน
- ค้นหาข้อมูลการรับประกันและข้อบังคับ
- เข้าถึงทรัพยากรการพิมพ์ผ่านอุปกรณ์เคลื่อนที่

หากต้องการเรียนรู้เกี่ยวกับเครื่องพิมพ์ www.hp.com/support/ljm404FAQ หรือสแกนรหัส QR นี้





LaserJet Pro M304-M305, M404-M405 入門指南

| | |
|-----------------------|----|
| English..... | 3 |
| Bahasa Indonesia..... | 5 |
| 한국어..... | 7 |
| ไทย..... | 9 |
| 繁體中文..... | 11 |
| Tiếng Việt..... | 13 |

附註：設定印表機和下載軟體驅動程式時必須要與網際網路連線。

常見問題集

如需常見問題解答，請前往 www.hp.com/support/ljm404FAQ，或掃描 QR 代碼。



3. 控制面板上的初始設定

開啟印表機電源後，等待印表機初始化。若要瀏覽控制面板，請使用箭號按鈕和 **OK** (確定) 按鈕。請依照控制面板上的提示，設定下列設定值：

- 語言
- 位置
- 印表機設定環境

選擇下列其中一個選項：

- **自我管理：**適合大部分使用者的最佳化預設值，包括引導式設定和組態步驟，以及自動更新。
- **IT 管理：**適合機群管理功能的最佳化預設值。

設定值完全可在初始設定之後進行自訂。

4. 下載與安裝軟體

附註：在接獲提示前，請勿連接 USB 連接線。

方法 1：下載 HP Easy Start (Windows 和 Mac OS)

1. 前往 123.hp.com/laserjet，然後按一下 **Download** (下載)。
2. 請依照螢幕上的指示和提示，將檔案儲存至電腦。
3. 從您儲存軟體檔案的資料夾中，啟動軟體檔案。
4. 請依照螢幕上的指示，安裝軟體。
5. 在出現選擇連線類型的提示時，選擇適合連線類型的選項。

方法 2：從印表機支援網站下載 (Windows 和 Mac OS)

1. 前往 www.hp.com/support/ljm304 或 www.hp.com/support/ljm404。
2. 選擇 **Software and Drivers** (軟體和驅動程式)。
3. 下載適用於您印表機型號和作業系統的軟體。
4. 從儲存軟體檔案的資料夾中，啟動軟體檔案。
5. 請依照螢幕上的指示，安裝軟體。
6. 在出現選擇連線類型的提示時，選擇適合連線類型的選項。

提示：使用 HP Smart 應用程式，將印表機連接至無線網路 (僅限無線機型) (僅限 iOS)

1. 從印表機上拔下乙太連接線和 USB 連接線。
2. 從印表機控制面板上，選擇 **Setup** (設定) > **Network setup** (網路設定) > **Restore Network Setting** (復原網路設定值)，即可重設印表機網路。接著，無線網路燈號會開始閃爍。
3. 依照「5. 行動列印」方法 1 中的步驟，安裝 HP Smart 應用程式。
4. 在行動裝置上，開啟 Bluetooth。
5. 執行 HP Smart 應用程式。請依照螢幕上的指示，選擇印表機的名稱 (例如，「HP LaserJet XXXX」)，並將其連接到無線網路。
6. 印表機成功連接至無線網路之後，無線網路燈號就會停止閃爍，並開始維持恆亮。

手動設定 IP 位址

請參閱使用指南，取得有關手動設定 IP 位址的資訊。如需詳細資訊，請前往 www.hp.com/support/ljm304 或 www.hp.com/support/ljm404。

5. 行動列印 (選用)

方法 1：HP Smart

使用 HP Smart 應用程式，進行設定、列印和其他動作。

1. 掃描 QR 碼或前往 123.hp.com。
2. 安裝 HP Smart 應用程式。
3. 執行 HP Smart 應用程式，然後依照畫面上的指示，進行連線、設定、列印和其他動作。



方法 2：Wi-Fi Direct (僅限無線機型)

Wi-Fi Direct 可讓具備 Wi-Fi 功能的裝置 (例如智慧型手機、平板電腦或電腦) 在沒有使用無線路由器或存取點的情況下，直接與印表機進行無線網路連線。使用將具備 Wi-Fi 功能的裝置連接至新的無線網路或熱點的相同方法，連接印表機的 Wi-Fi Direct 訊號。

啟用 Wi-Fi Direct

1. 在印表機控制面板上，按下 **OK** (確定) 按鈕，即可顯示 **Home** 主畫面。
2. 使用箭頭按鈕與 **OK** (確定) 按鈕，即可開啟下列功能表：
 - 設定
 - Wi-Fi direct
 - Wi-Fi direct 狀態
3. 使用箭頭按鈕，瀏覽至 **ON** (開啟) 或 **OFF** (關閉)，然後按下 **OK** (確定) 按鈕，即可啟用或停用 Wi-Fi Direct 功能。

探索印表機

1. 在行動裝置上，開啟 Wi-Fi，然後搜尋無線網路。
2. 選擇與印表機控制面板上所示相同名稱的印表機名稱。

i 如需無線列印及無線設定的詳細資訊，請前往 www.hp.com/go/wirelessprinting。

i 進一步了解行動列印

本產品支援 AirPrint 和 Wi-Fi Direct。如需行動列印的詳細資訊，請掃描 QR 碼或前往 www.hp.com/go/LaserJetMobilePrinting。



疑難排解

使用指南

使用指南包含印表機使用方式及疑難排解資訊。使用指南也有提供網路版：

1. 前往 www.hp.com/support/ljM304 或 www.hp.com/support/ljM404。
2. 在收到提示時，選擇印表機，然後按一下 **User Guides** (使用指南)。

查看韌體更新

1. 前往 www.hp.com/support/ljM304 或 www.hp.com/support/ljM404。
2. 在收到提示時，選擇印表機，然後按一下 **Software and Drivers** (軟體和驅動程式)。
3. 選擇作業系統，然後按一下 **Next** (下一步) 按鈕。
4. 選擇 **Firmware** (韌體)，然後按一下 **Download** (下載) 按鈕。

其他支援資源

如需印表機的 HP 全方位說明，請前往 www.hp.com/support/ljM304 或 www.hp.com/support/ljM404。

- 解決問題
- 尋找進階組態設定指示
- 下載軟體更新
- 加入支援論壇
- 尋找保固及法規資訊
- 存取行動列印資源

若要進一步了解印表機，請前往 www.hp.com/support/ljM404FAQ，或掃描 QR 代碼。





Hướng dẫn bắt đầu dành cho LaserJet Pro M304-M305, M404-M405

English.....3

Bahasa Indonesia.....5

한국어7

ไทย9

繁體中文..... 11

Tiếng Việt 13

LƯU Ý: Cần có kết nối Internet để thiết lập máy in và tải xuống trình điều khiển phần mềm.

i Câu hỏi thường gặp

Để xem những câu hỏi thường gặp, hãy truy cập www.hp.com/support/ljM404FAQ hoặc quét mã QR.



3. Thiết lập ban đầu trên bảng điều khiển

Sau khi bật máy in, hãy đợi để máy in khởi động. Để điều hướng trong bảng điều khiển, hãy sử dụng mũi tên và nút **OK**. Làm theo lời nhắc trên bảng điều khiển để cấu hình các cài đặt sau:

- Ngôn ngữ
- Vị trí
- Môi trường thiết lập máy in

Chọn một trong các tùy chọn này:

- **Self-managed** (Tự quản lý): Cài đặt mặc định được tối ưu hóa cho hầu hết người dùng bao gồm cập nhật tự động và các bước cấu hình cũng như thiết lập có hướng dẫn.
- **It-managed** (Quản lý bằng CNTT): Cài đặt mặc định được tối ưu hóa để có thể quản lý nhiều máy in.

Cài đặt có thể tùy chỉnh hoàn toàn sau lần thiết lập đầu tiên.

4. Tải xuống và cài đặt phần mềm

LƯU Ý: Không cắm cáp USB cho tới khi bạn được nhắc làm điều đó.

i Phương pháp 1: Tải xuống HP Easy Start (Windows và Mac OS)

1. Truy cập 123.hp.com/laserjet và nhấp vào **Download** (Tải xuống).
2. Làm theo hướng dẫn trên màn hình và lời nhắc để lưu tệp vào máy tính.
3. Khởi chạy tệp phần mềm từ thư mục bạn đã lưu tệp.
4. Làm theo hướng dẫn trên màn hình để cài đặt phần mềm.
5. Khi được nhắc chọn loại kết nối, hãy chọn tùy chọn thích hợp cho loại kết nối.

i Phương pháp 2: Tải xuống từ trang web hỗ trợ máy in (Windows và Mac OS)

1. Truy cập www.hp.com/support/ljM304 hoặc www.hp.com/support/ljM404.
2. Chọn **Software and Drivers** (Phần mềm và trình điều khiển).
3. Tải xuống phần mềm cho kiểu máy in và hệ điều hành của bạn.
4. Khởi chạy tệp phần mềm từ thư mục lưu tệp.
5. Làm theo hướng dẫn trên màn hình để cài đặt phần mềm.
6. Khi được nhắc chọn loại kết nối, hãy chọn tùy chọn thích hợp cho loại kết nối.

i Mẹo: Kết nối máy in với mạng không dây bằng ứng dụng HP Smart (chỉ dành cho kiểu máy không dây) (chỉ dành cho iOS)

1. Ngắt kết nối cáp Ethernet và cáp USB khỏi máy in.
2. Từ bảng điều khiển máy in, chọn **Setup** (Thiết lập) > **Network setup** (Thiết lập mạng) > **Restore Network Setting** (Khôi phục cài đặt mạng) để đặt lại mạng máy in. Sau đó, đèn Không dây sẽ bắt đầu nhấp nháy.
3. Làm theo hướng dẫn trong phần "5. In từ thiết bị không dây" Phương pháp 1 để cài đặt ứng dụng HP Smart.
4. Bật Bluetooth trên thiết bị di động của bạn.
5. Chạy ứng dụng HP Smart. Làm theo hướng dẫn trên màn hình để chọn tên máy in của bạn (ví dụ: "HP LaserJet XXXX") và kết nối máy in với mạng không dây của bạn.
6. Sau khi máy in kết nối với mạng không dây thành công, đèn Không dây sẽ dừng nhấp nháy và duy trì trạng thái bật.

i Định cấu hình địa chỉ IP theo cách thủ công

Xem hướng dẫn sử dụng máy in để biết thông tin về cách cấu hình thủ công địa chỉ IP. Để biết thêm thông tin, hãy truy cập www.hp.com/support/ljM304 hoặc www.hp.com/support/ljM404.

5. In từ thiết bị di động (tùy chọn)

Phương pháp 1: HP Smart

Sử dụng ứng dụng HP Smart để thiết lập, in và hơn thế nữa.

1. Quét mã QR hoặc truy cập 123.hp.com.
2. Cài đặt ứng dụng HP Smart.
3. Chạy ứng dụng HP Smart và làm theo hướng dẫn trên màn hình để kết nối, thiết lập, in và hơn thế nữa.



Phương pháp 2: Wi-Fi Direct (chỉ dành cho kiểu máy không dây)

Wi-Fi Direct cho phép các thiết bị tương thích với Wi-Fi, chẳng hạn như điện thoại thông minh, máy tính bảng hoặc máy tính thực hiện kết nối không dây trực tiếp với máy in mà không cần sử dụng điểm truy cập hoặc bộ định tuyến không dây. Kết nối với tín hiệu Wi-Fi Direct của máy in theo cách giống như các thiết bị tương thích Wi-Fi kết nối với điểm truy cập hoặc mạng không dây mới.

Bật Wi-Fi Direct

1. Trên bảng điều khiển máy in, nhấn vào nút **OK** để hiển thị màn hình **Home** (Chính).
2. Sử dụng các nút mũi tên và nút **OK** để mở các menu sau:
 - **Setup (Cài đặt)**
 - **Wi-Fi direct**
 - **Wi-Fi direct status (Trạng thái Wi-Fi direct)**
3. Sử dụng các nút mũi tên để chuyển thành **ON (BẬT)** hoặc **OFF (TẮT)** và nhấn nút **OK** để bật hoặc tắt tính năng Wi-Fi Direct.

Phát hiện máy in

1. Từ thiết bị di động, bật Wi-Fi và tìm mạng không dây.
2. Chọn tên máy in như hiển thị trên bảng điều khiển máy in.

Để biết thêm thông tin về thiết lập mạng không dây và in không dây, hãy truy cập www.hp.com/go/wirelessprinting.

Tìm hiểu thêm về tính năng in từ thiết bị di động

Sản phẩm hỗ trợ AirPrint và Wi-Fi Direct. Để biết thêm thông tin về tính năng in từ thiết bị di động, hãy quét mã QR hoặc truy cập www.hp.com/go/LaserJetMobilePrinting.



Xử lý sự cố

Hướng dẫn sử dụng

Hướng dẫn sử dụng chứa thông tin về cách sử dụng và khắc phục sự cố với máy in. Bạn có thể xem hướng dẫn này trên Trang web:

1. Truy cập www.hp.com/support/ljM304 hoặc www.hp.com/support/ljM404.
2. Nếu được nhắc, hãy chọn máy in rồi nhấp vào **User Guides** (Hướng dẫn sử dụng).

Kiểm tra các bản cập nhật của chương trình cơ sở

1. Truy cập www.hp.com/support/ljM304 hoặc www.hp.com/support/ljM404.
2. Nếu được nhắc, hãy chọn máy in rồi nhấp vào **Software and Drivers** (Phần mềm và trình điều khiển).
3. Chọn hệ điều hành và nhấp vào nút **Next** (Tiếp).
4. Chọn **Firmware** (Chương trình cơ sở) và nhấp vào nút **Download** (Tải xuống).

Tài nguyên hỗ trợ bổ sung

Để xem phần trợ giúp toàn diện của HP dành cho máy in, hãy truy cập www.hp.com/support/ljM304 hoặc www.hp.com/support/ljM404.

- Giải quyết sự cố
- Tìm hướng dẫn cấu hình nâng cao
- Tải xuống các bản cập nhật phần mềm
- Tham gia các diễn đàn hỗ trợ
- Tìm thông tin về quy định và bảo hành
- Truy cập vào tài nguyên in dành cho thiết bị di động

Để tìm hiểu thêm về máy in, vui lòng truy cập www.hp.com/support/ljM404FAQ hoặc quét mã QR.



© Copyright 2018 HP Development Company, L.P.

Reproduction, adaptation or translation without prior written permission is prohibited, except as allowed under the copyright laws.

The information contained herein is subject to change without notice.

The only warranties for HP products and services are set forth in the express warranty statements accompanying such products and services. Nothing herein should be construed as constituting an additional warranty. HP shall not be liable for technical or editorial errors or omissions contained herein.

Trademark Credits

Windows® is a U.S. registered trademark of Microsoft Corporation.

Apple and the Apple logo are trademarks of Apple Inc., registered in the U.S. and other countries.

Mac OS is a trademark of Apple Inc., registered in the U.S. and other countries.

AirPrint is a trademark of Apple Inc., registered in the U.S. and other countries.



www.hp.com

