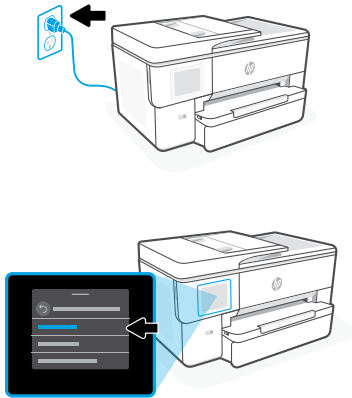


Quick Start Guide

HP OfficeJet Pro 9720e series



1



Power on and select language

Plug in to turn on the printer. On the display, select your language and country or region.

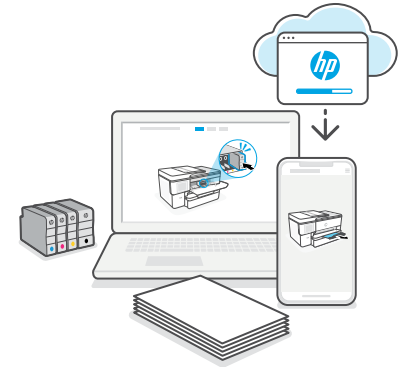
2



Go to the digital setup guide

Scan the QR code using a mobile device or visit hp.com/start/ojp9720e on a computer.

3



Use the digital setup guide to install ink, paper, and HP software

The HP software will connect the printer to your Wi-Fi network.





We redesigned our printed instructions to help reduce waste.
Find everything you need online!

hp.com/start/ojp9720e



Printed in China

© Copyright 2025 HP Development Company, L.P.



53N95-90022