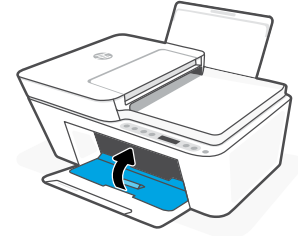
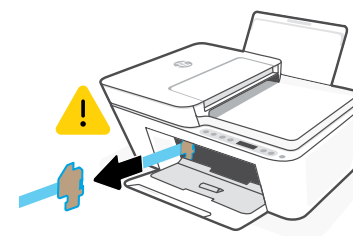
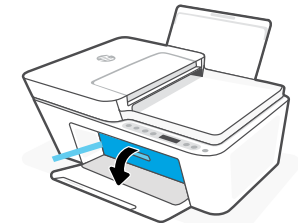
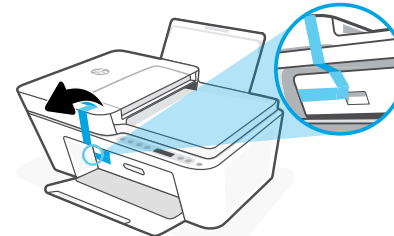
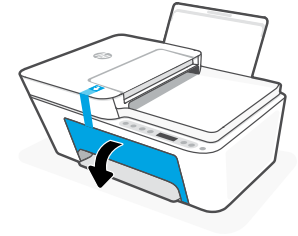
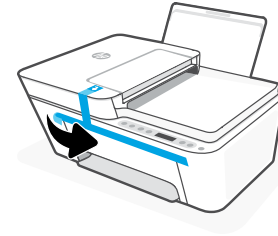




1



EN Get help with setup

Find setup information and videos online.

ZHTW 獲得設定方面的協助

在線上尋找設定資訊及視訊。



hp.com/support/printer-setup



EN Remove and discard all packaging, tape, and cardboard. Close the ink access door.

ZHTW 將所有包裝、膠帶及紙板取下並丟棄。關閉墨水存取擋門。

The Apple logo is a trademark of Apple Inc., registered in the U.S. and other countries.
App Store is a service mark of Apple Inc. Android, Google Play, and the Google Play logo are trademarks of Google Inc.



588K6-90002

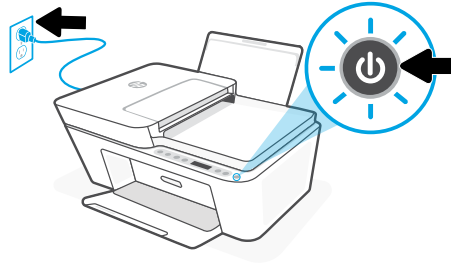
EN **ZHTW**

© Copyright 2023 HP Development Company, L.P.

Printed in China



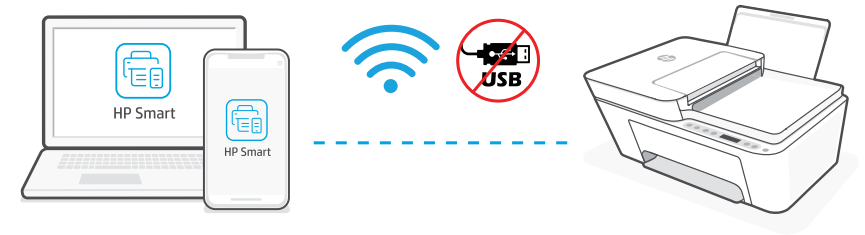
2



EN Plug in and power on the printer.

ZHTW 插上電源線，然後開啟印表機。

4



EN Connect the printer to a Wi-Fi network using HP Smart software. This printer only supports 2.4 GHz networks.

 Do not use USB for initial setup. See **Reference Guide** for details.

ZHTW 使用 HP Smart 軟體將印表機連線至 Wi-Fi 網路。本印表機僅支援 2.4 GHz 網路。

 請勿使用 USB 進行初始設定。請參閱**參考指南**以取得詳細資訊。

3



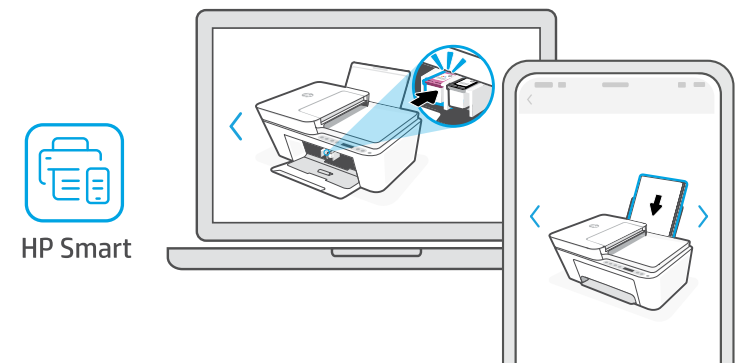
EN Install HP Smart software

On a computer or mobile device, go to **123.hp.com** to install the required HP Smart software.

ZHTW 安裝 HP Smart 軟體

透過電腦或行動裝置前往 **123.hp.com** 並安裝所需的 HP Smart 軟體。

5



EN Install ink and paper using guided setup and animations in the HP Smart software.

ZHTW 使用 HP Smart 軟體中的引導式設定和動畫教學來安裝墨水與紙張。

